

# ATM (phospho Ser1981) antibody [HL1062]

## Cat. No. GTX636086

Host	Rabbit
Clonality	Monoclonal I
Isotype	gG
Application	WB, ICC/IF, IHC-P
Reactivity	Human

Reference ( 1 )  
Pack age  
100 µl, 25 µl

### APPLICATION

#### Application Note

\*Optimal dilutions/concentrations should be determined by the researcher.

Suggested dilution	Recommended dilution
WB	1:500-1:3000
ICC/IF	Assay dependent
IHC-P	Assay dependent
Not tested in other applications.	

Observed MW 350 kDa.

### PROPERTIES

Form	Liquid
Buffer	PBS
Preservative	No preservative
Storage	Store as concentrated solution. Centrifuge briefly prior to opening vial. For short-term storage (1-2 weeks), store at 4°C. For long-term storage, aliquot and store at -20°C or below. Avoid multiple freeze-thaw cycles.
Concentration	1 mg/ml (Please refer to the vial label for the specific concentration.)
Immunogen	Carrier-protein conjugated synthetic peptide surrounding phospho Ser1981 of human ATM. The exact sequence is proprietary.
Purification	Affinity purified by protein A.
Conjugation	Unconjugated
Note	For laboratory research use only. Not for any clinical, therapeutic, or diagnostic use in humans or animals. Not for animal or human consumption. Purchasers shall not, and agree not to enable third parties to, analyze, copy, reverse engineer or otherwise attempt to determine the structure or sequence of the product.

Scan me for more info!



For full product information, images and publications, please visit our [website](https://www.unibiotech.in).



[www.unibiotech.in](https://www.unibiotech.in)



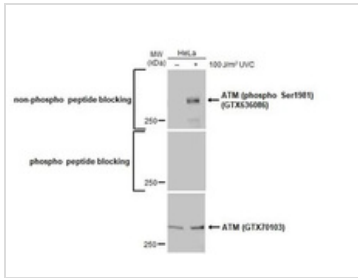
An ISO 9001:2015 Certified Company

Order now and enjoy our services anywhere in India!

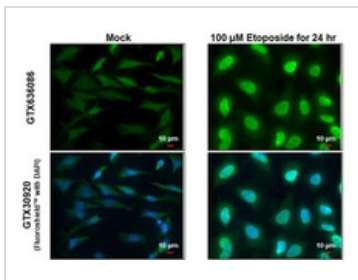
Tel: +91 9910 73 8844 | Email: [info@unibiotech.in](mailto:info@unibiotech.in)

Reg. Address : A-33, 2nd Floor, Ring Road, Rajouri Garden, New Delhi-110027 (INDIA)

Date 2024 / 12 / 13 Page 1 of 2

**DATA IMAGES**

**GTX636086 WB Image**

Untreated (–) and treated (+) 293T whole cell extracts (60 µg) were separated by 5% SDS-PAGE, and the membrane was blotted with ATM (phospho Ser1981) antibody [HL1062] (GTX636086) diluted at 1:1000. The HRP-conjugated anti-rabbit IgG antibody (GTX213110-01) was used to detect the primary antibody, and the signal was developed with Trident ECL plus-Enhanced.

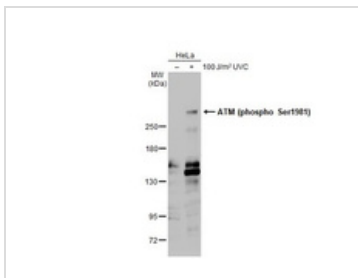

**GTX636086 ICC/IF Image**

ATM (phospho Ser1981) antibody [HL1062] detects ATM (phospho Ser1981) protein at nucleus by immunofluorescent analysis.

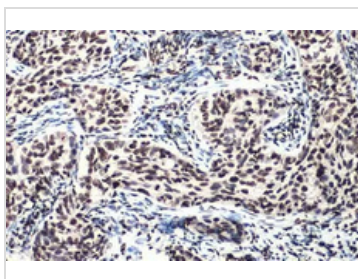
Sample: Mock and treated HeLa cells were fixed in 4% paraformaldehyde at RT for 15 min.

Green: ATM (phospho Ser1981) stained by ATM (phospho Ser1981) antibody [HL1062] (GTX636086) diluted at 1:500.

Blue: Fluoroshield with DAPI (GTX30920).


**GTX636086 WB Image**

Untreated (–) and treated (+) 293T whole cell extracts (60 µg) were separated by 5% SDS-PAGE, and the membrane was blotted with ATM (phospho Ser1981) antibody [HL1062] (GTX636086) diluted at 1:1000. The HRP-conjugated anti-rabbit IgG antibody (GTX213110-01) was used to detect the primary antibody.

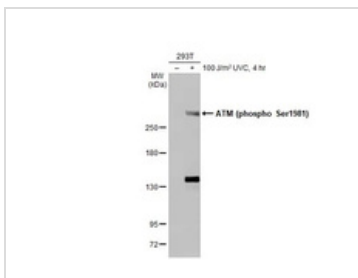

**GTX636086 IHC-P Image**

ATM (phospho Ser1981) antibody [HL1062] detects ATM (phospho Ser1981) protein at nucleus by immunohistochemical analysis.

Sample: Paraffin-embedded human cervical carcinoma.

ATM (phospho Ser1981) stained by ATM (phospho Ser1981) antibody [HL1062] (GTX636086) diluted at 1:100.

Antigen Retrieval: Citrate buffer, pH 6.0, 15 min


**GTX636086 WB Image**

Untreated (–) and treated (+) 293T whole cell extracts were separated by 5% SDS-PAGE, and the membrane was blotted with ATM (phospho Ser1981) antibody [HL1062] (GTX636086) diluted at 1:1000. The HRP-conjugated anti-rabbit IgG antibody (GTX213110-01) was used to detect the primary antibody.

Scan me for more info!



For full product information, images and publications, please visit our [website](https://www.unibiotex.in).



[www.unibiotex.in](https://www.unibiotex.in)



An ISO 9001:2015 Certified Company

Order now and enjoy our services anywhere in India!

Tel: +91 9910 73 8844 | Email: [info@unibiotex.in](mailto:info@unibiotex.in)

Reg. Address : A-33, 2nd Floor, Ring Road, Rajouri Garden, New Delhi-110027 (INDIA)

Date 2024 / 12 / 13 Page 2 of 2