

FABP4 antibody [HL1521]

Cat. No. GTX636995

Host	Rabbit
Clonality	Monoclonal
Isotype	IgG
Application	WB, ICC/IF, IHC-P
Reactivity	Human, Mouse, Rat

Reference (1)

★★★★☆ Review (1)

Pack age

100 µl, 25 µl

APPLICATION

Application Note

*Optimal dilutions/concentrations should be determined by the researcher.

Suggested dilution	Recommended dilution
WB	1:1000-1:10000
ICC/IF	Assay dependent
IHC-P	Assay dependent

Not tested in other applications.

Calculated MW 15 kDa. ([Note](#))

PROPERTIES

Form	Liquid
Buffer	PBS
Preservative	No preservative
Storage	Store as concentrated solution. Centrifuge briefly prior to opening vial. For short-term storage (1-2 weeks), store at 4°C. For long-term storage, aliquot and store at -20°C or below. Avoid multiple freeze-thaw cycles.
Concentration	1 mg/ml (Please refer to the vial label for the specific concentration.)
Immunogen	Carrier-protein conjugated synthetic peptide encompassing a sequence within the center region of human FABP4. The exact sequence is proprietary.
Purification	Affinity purified by Protein A.
Conjugation	Unconjugated

Note For laboratory research use only. Not for any clinical, therapeutic, or diagnostic use in humans or animals. Not for animal or human consumption.

Purchasers shall not, and agree not to enable third parties to, analyze, copy, reverse engineer or otherwise attempt to determine the structure or sequence of the product.

Scan me for more info!



For full product information, images and publications, please visit our [website](#).



www.unibiotech.in



An ISO 9001:2015 Certified Company

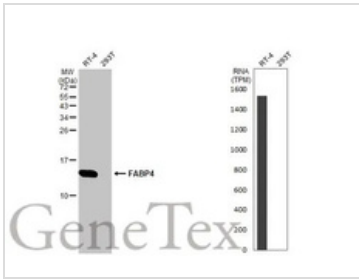
Order now and enjoy our services anywhere in India!

Tel: +91 9910 73 8844 | Email: info@unibiotech.in

Reg. Address : A-33, 2nd Floor, Ring Road, Rajouri Garden, New Delhi-110027 (INDIA)

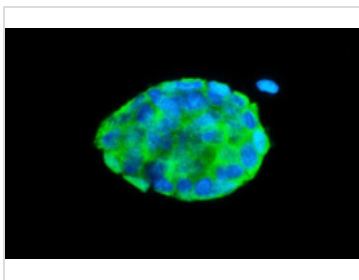
Date 2024 / 12 / 15 Page 1 of 2

DATA IMAGES



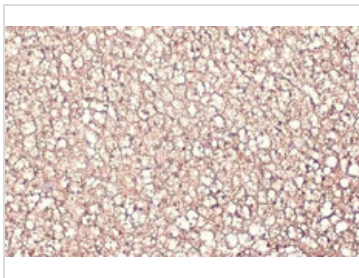
GTX636995 WB Image

Various whole cell extracts (30 µg) were separated by 15% SDS-PAGE, and the membrane was blotted with FABP4 antibody [HL1521] (GTX636995) diluted at 1:10000. The HRP-conjugated anti-rabbit IgG antibody (GTX213110-01) was used to detect the primary antibody. Corresponding RNA expression data for the same cell lines are based on Human Protein Atlas program.



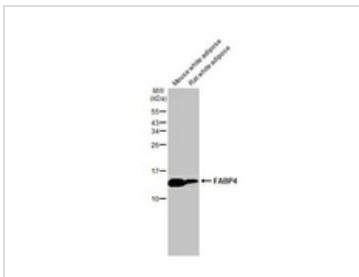
GTX636995 ICC/IF Image

FABP4 antibody [HL1521] detects FABP4 protein at cytoplasm by immunofluorescent analysis. Sample: RT-4 cells were fixed in 4% paraformaldehyde at RT for 15 min. Green: FABP4 stained by FABP4 antibody [HL1521] (GTX636995) diluted at 1:500. Blue: Fluoroshield with DAPI (GTX30920).



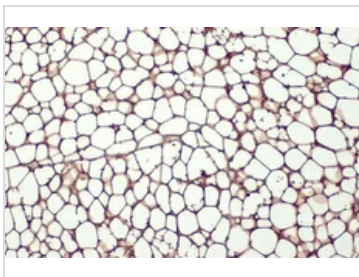
GTX636995 IHC-P Image

FABP4 antibody [HL1521] detects FABP4 protein at cytoplasm by immunohistochemical analysis. Sample: Paraffin-embedded mouse brown adipocyte. FABP4 stained by FABP4 antibody [HL1521] (GTX636995) diluted at 1:100. Antigen Retrieval: Citrate buffer, pH 6.0, 15 min



GTX636995 WB Image

Various tissue extracts (50 µg) were separated by 15% SDS-PAGE, and the membrane was blotted with FABP4 antibody [HL1521] (GTX636995) diluted at 1:5000. The HRP-conjugated anti-rabbit IgG antibody (GTX213110-01) was used to detect the primary antibody.



GTX636995 IHC-P Image

FABP4 antibody [HL1521] detects FABP4 protein at cytoplasm by immunohistochemical analysis. Sample: Paraffin-embedded mouse white adipocyte. FABP4 stained by FABP4 antibody [HL1521] (GTX636995) diluted at 1:100. Antigen Retrieval: Citrate buffer, pH 6.0, 15 min

Scan me for more info!



www.unibiotech.in



Order now and enjoy our services anywhere in India!

Tel: +91 9910 73 8844 | Email: info@unibiotech.in

Reg. Address : A-33, 2nd Floor, Ring Road, Rajouri Garden, New Delhi-110027 (INDIA)

Date 2024 / 12 / 15 Page 2 of 2



For full product information, images and publications, please visit our [website](http://www.unibiotech.in).