

BDNF antibody

Cat. No. GTX132621

Host	Rabbit
Clonality	Polyclonal
Isotype	IgG
Application	WB, ICC/IF, IHC-P, IHC-Fr
Reactivity	Human, Mouse, Rat

Reference (23)

★★★★★ Review (2)

Pack age

100 µl, 25 µl

APPLICATION

Application Note

*Optimal dilutions/concentrations should be determined by the researcher.

Suggested dilution	Recommended dilution
WB	1:500-1:3000
ICC/IF	1:100-1:1000
IHC-P	1:100-1:1000
IHC-Fr	Assay dependent

Not tested in other applications.

Calculated MW 28 kDa. ([Note](#))

PROPERTIES

Form	Liquid
Buffer	PBS, 20% Glycerol
Preservative	0.025% ProClin 300
Storage	Store as concentrated solution. Centrifuge briefly prior to opening vial. For short-term storage (1-2 weeks), store at 4°C. For long-term storage, aliquot and store at -20°C or below. Avoid multiple freeze-thaw cycles.
Concentration	1.52 mg/ml (Please refer to the vial label for the specific concentration.)
Immunogen	Carrier-protein conjugated synthetic peptide encompassing a sequence within the center region of human BDNF. The exact sequence is proprietary.
Purification	Purified by antigen-affinity chromatography.
Conjugation	Unconjugated



For full product information, images and publications, please visit our [website](#).

Scan me for more info!



www.unibiotech.in



An ISO 9001:2015 Certified Company

Order now and enjoy our services anywhere in India!

Tel: +91 9910 73 8844 | Email: info@unibiotech.in

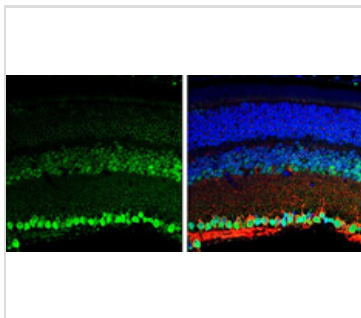
Reg. Address : A-33, 2nd Floor, Ring Road, Rajouri Garden, New Delhi-110027 (INDIA)

Date 2024 / 12 / 13 Page 1 of 2

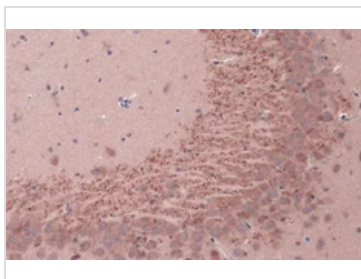
Note

For laboratory research use only. Not for any clinical, therapeutic, or diagnostic use in humans or animals. Not for animal or human consumption.
 Purchasers shall not, and agree not to enable third parties to, analyze, copy, reverse engineer or otherwise attempt to determine the structure or sequence of the product.

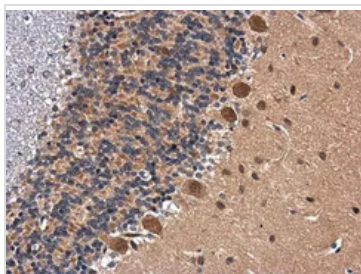
DATA IMAGES



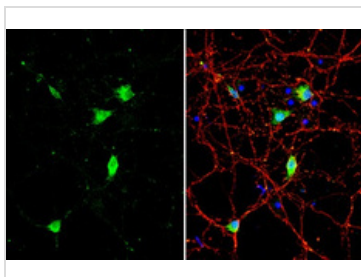
GTX132621 IHC-P Image
 BDNF antibody detects BDNF protein expression by immunohistochemical analysis.
 Sample: Paraffin-Embedded adult mouse retina.
 Green: BDNF protein stained by BDNF antibody (GTX132621) diluted at 1:250.
 Red: beta Tubulin 3/ TUJ1, stained by beta Tubulin 3/ TUJ1 antibody [GT11710] (GTX631836) diluted at 1:500.
 Blue: Fluoroshield with DAPI (GTX30920).



GTX132621 IHC-P Image
 BDNF antibody detects BDNF protein at cytoplasm by immunohistochemical analysis.
 Sample: Paraffin-embedded rat brain.
 BDNF stained by BDNF antibody (GTX132621) diluted at 1:1000.
 Antigen Retrieval: Citrate buffer, pH 6.0, 15 min



GTX132621 IHC-P Image
 BDNF antibody detects BDNF protein at cytoplasm in rat brain by immunohistochemical analysis.
 Sample: Paraffin-embedded rat brain.
 BDNF antibody (GTX132621) diluted at 1:500.
 Antigen Retrieval: Citrate buffer, pH 6.0, 15 min



GTX132621 ICC/IF Image
 BDNF antibody detects BDNF protein by immunofluorescent analysis.
 Sample: DIV10 rat E18 primary cortical neuron cells were fixed in 4% paraformaldehyde at RT for 15 min.
 Green: BDNF stained by BDNF antibody (GTX132621) diluted at 1:500.
 Red: Tau, stained by Tau antibody [GT287] (GTX634809) diluted at 1:500.
 Blue: Fluoroshield with DAPI (GTX30920).

Scan me for more info!



For full product information, images and publications, please visit our [website](http://www.unibiotech.in).



www.unibiotech.in



An ISO 9001:2015 Certified Company

Order now and enjoy our services anywhere in India!

Tel: +91 9910 73 8844 | Email: info@unibiotech.in

Reg. Address : A-33, 2nd Floor, Ring Road, Rajouri Garden, New Delhi-110027 (INDIA)

Date 2024 / 12 / 13 Page 2 of 2