

Histone H3K18ac (Acetyl Lys18) antibody [HL1463]

Cat. No. GTX636937

Host	Rabbit
Clonality	Monoclonal
Isotype	IgG
Application	WB, ICC/IF, IHC-P, Dot
Reactivity	Human, Mouse, Rat, Drosophila

Package
100 µl, 25 µl

APPLICATION

Application Note

*Optimal dilutions/concentrations should be determined by the researcher.

Suggested dilution	Recommended dilution
WB	1:500-1:3000
ICC/IF	Assay dependent
IHC-P	1:100-1:1000
Dot	Assay dependent

Not tested in other applications.

Observed MW 17 kDa.

PROPERTIES

Form	Liquid
Buffer	PBS
Preservative	No preservative
Storage	Store as concentrated solution. Centrifuge briefly prior to opening vial. For short-term storage (1-2 weeks), store at 4°C. For long-term storage, aliquot and store at -20°C or below. Avoid multiple freeze-thaw cycles.
Concentration	1 mg/ml (Please refer to the vial label for the specific concentration.)
Immunogen	Carrier-protein conjugated synthetic peptide surrounding acetyl Lys18 of human Histone H3. The exact sequence is proprietary.
Purification	Affinity purified by Protein A.
Conjugation	Unconjugated

Scan me for more info!



For full product information, images and publications, please visit our [website](https://www.unibiotech.in).



www.unibiotech.in



An ISO 9001:2015 Certified Company

Order now and enjoy our services anywhere in India!

Tel: +91 9910 73 8844 | Email: info@unibiotech.in

Reg. Address : A-33, 2nd Floor, Ring Road, Rajouri Garden, New Delhi-110027 (INDIA)

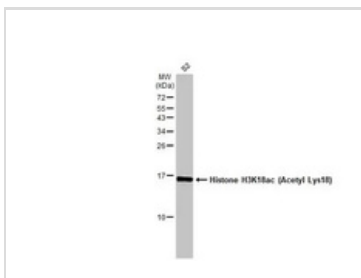
Date 2024 / 12 / 15 Page 1 of 2

Note

For laboratory research use only. Not for any clinical, therapeutic, or diagnostic use in humans or animals. Not for animal or human consumption.

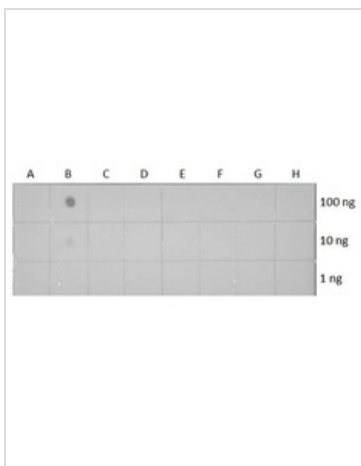
Purchasers shall not, and agree not to enable third parties to, analyze, copy, reverse engineer or otherwise attempt to determine the structure or sequence of the product.

DATA IMAGES



GTX636937 WB Image

Whole cell extract (30 µg) was separated by 15% SDS-PAGE, and the membrane was blotted with Histone H3K18ac (Acetyl Lys18) antibody [HL1463] (GTX636937) diluted at 1:1000. The HRP-conjugated anti-rabbit IgG antibody (GTX213110-01) was used to detect the primary antibody.



GTX636937 Dot Image

Dotblot analysis of anti-Histone H3K18ac (Acetyl Lys18) antibody with peptide samples. Varied amount of peptide samples were spotted onto positively charged nylon membrane and blotted with Histone H3K18ac (Acetyl Lys18) antibody (GTX636937) 1:5000 dilution.

A: Peptide samples of H3K18 un

B: Peptide samples of H3K18ac

C: Peptide samples of H3K9un

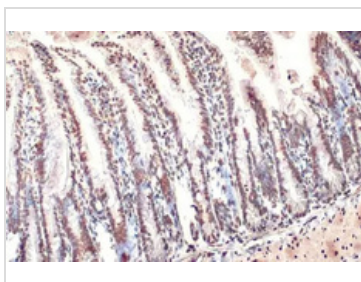
D: Peptide samples of H3K9ac

E: Peptide samples of H3K14un

F: Peptide samples of H3K14ac

G: Peptide samples of H3K27un

H: Peptide samples of H3K27ac



GTX636937 IHC-P Image

Histone H3K18ac (Acetyl Lys18) antibody [HL1463] detects Histone H3K18ac (Acetyl Lys18) protein at nucleus by immunohistochemical analysis.

Sample: Paraffin-embedded mouse intestine.

Histone H3K18ac (Acetyl Lys18) stained by Histone H3K18ac (Acetyl Lys18) antibody [HL1463] (GTX636937) diluted at 1:100.

Antigen Retrieval: Citrate buffer, pH 6.0, 15 min

Scan me for more info!



www.unibiotech.in



For full product information, images and publications, please visit our [website](http://www.unibiotech.in).



An ISO 9001:2015 Certified Company

Order now and enjoy our services anywhere in India!

Tel: +91 9910 73 8844 | Email: info@unibiotech.in

Reg. Address : A-33, 2nd Floor, Ring Road, Rajouri Garden, New Delhi-110027 (INDIA)

Date 2024 / 12 / 15 Page 2 of 2