

ROCK2 (phospho Ser1366) antibody [HL1071]

Cat. No. GTX636103

Host	Rabbit
Clonality	Monoclonal
Isotype	IgG
Application	WB, ICC/IF
Reactivity	Human, Mouse

Reference (1)
 Package
 100 µl, 25 µl

APPLICATION

Application Note

*Optimal dilutions/concentrations should be determined by the researcher.

Suggested dilution	Recommended dilution
WB	1:500-1:3000
ICC/IF	Assay dependent

Not tested in other applications.

Calculated MW 161 kDa. ([Note](#))

PROPERTIES

Form	Liquid
Buffer	PBS
Preservative	No preservative
Storage	Store as concentrated solution. Centrifuge briefly prior to opening vial. For short-term storage (1-2 weeks), store at 4°C. For long-term storage, aliquot and store at -20°C or below. Avoid multiple freeze-thaw cycles.
Concentration	1 mg/ml (Please refer to the vial label for the specific concentration.)
Immunogen	Carrier-protein conjugated synthetic peptide surrounding phospho Ser1366 of human ROCK2. The exact sequence is proprietary.
Purification	Affinity purified by Protein A.
Conjugation	Unconjugated

Note For laboratory research use only. Not for any clinical, therapeutic, or diagnostic use in humans or animals. Not for animal or human consumption.

Purchasers shall not, and agree not to enable third parties to, analyze, copy, reverse engineer or otherwise attempt to determine the structure or sequence of the product.

Scan me for more info!



For full product information, images and publications, please visit our [website](#).



www.unibiotech.in



An ISO 9001:2015 Certified Company

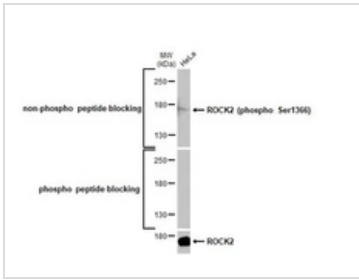
Order now and enjoy our services anywhere in India!

Tel: +91 9910 73 8844 | Email: info@unibiotech.in

Reg. Address : A-33, 2nd Floor, Ring Road, Rajouri Garden, New Delhi-110027 (INDIA)

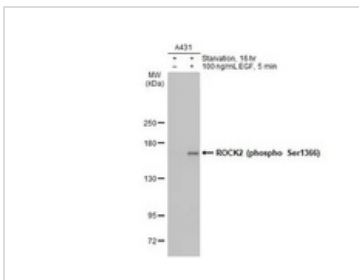
Date 2024 / 12 / 18 Page 1 of 2

DATA IMAGES



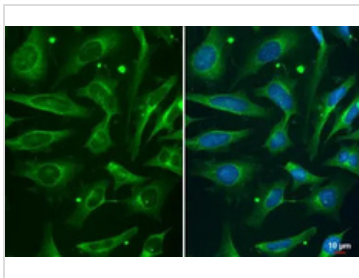
GTX636103 WB Image

Whole cell extract (30 µg) was separated by 5% SDS-PAGE, and the membrane was blotted with primary antibodies diluted at 1:1000. The HRP-conjugated anti-rabbit IgG antibody was used to detect the primary antibody, and the signal was developed with Trident ECL plus-Enhanced.
 Upper : ROCK2 (phospho Ser1366) antibody [HL1071] (GTX636103)
 Lower : ROCK2 antibody (GTX102619)



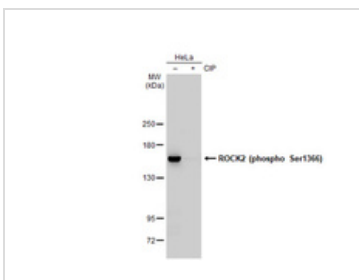
GTX636103 WB Image

Untreated (-) and treated (+) A431 whole cell extracts (30 µg) were separated by 5% SDS-PAGE, and the membrane was blotted with ROCK2 (phospho Ser1366) antibody [HL1071] (GTX636103) diluted at 1:1000. The HRP-conjugated anti-rabbit IgG antibody (GTX213110-01) was used to detect the primary antibody.



GTX636103 ICC/IF Image

ROCK2 (phospho Ser1366) antibody detects ROCK2 (phospho Ser1366) protein at cytoplasm by immunofluorescent analysis.
 Sample: HeLa cells were fixed in ice-cold MeOH for 5 min.
 Green: ROCK2 (phospho Ser1366) stained by ROCK2 (phospho Ser1366) antibody (GTX636103) diluted at 1:500.



GTX636103 WB Image

Untreated (-) and treated (+) HeLa whole cell extracts (30 µg) were separated by 5% SDS-PAGE, and the membrane was blotted with ROCK2 (phospho Ser1366) antibody [HL1071] (GTX636103) diluted at 1:1000. The HRP-conjugated anti-rabbit IgG antibody (GTX213110-01) was used to detect the primary antibody.

Scan me for more info!



www.unibiotech.in



For full product information, images and publications, please visit our [website](https://www.unibiotech.in).



Order now and enjoy our services anywhere in India!

Tel: +91 9910 73 8844 | Email: info@unibiotech.in

Reg. Address : A-33, 2nd Floor, Ring Road, Rajouri Garden, New Delhi-110027 (INDIA)

Date 2024 / 12 / 18 Page 2 of 2