

MAP2 antibody [HL1655]

Cat. No. GTX637253

Host	Rabbit
Clonality	Monoclonal
Isotype	IgG
Application	ICC/IF, IHC-P
Reactivity	Mouse, Rat

Package
100 µl, 25 µl

APPLICATION

Application Note

*Optimal dilutions/concentrations should be determined by the researcher.

Suggested dilution	Recommended dilution
ICC/IF	Assay dependent
IHC-P	1:100-1:1000

Not tested in other applications.

Calculated MW 199 kDa. ([Note](#))

PROPERTIES

Form	Liquid
Buffer	PBS
Preservative	No preservative
Storage	Store as concentrated solution. Centrifuge briefly prior to opening vial. For short-term storage (1-2 weeks), store at 4°C. For long-term storage, aliquot and store at -20°C or below. Avoid multiple freeze-thaw cycles.
Concentration	1 mg/ml (Please refer to the vial label for the specific concentration.)
Immunogen	Carrier-protein conjugated synthetic peptide encompassing a sequence within the N-terminus region of mouse MAP2. The exact sequence is proprietary.
Purification	Affinity purified by Protein A.
Conjugation	Unconjugated

Note
For laboratory research use only. Not for any clinical, therapeutic, or diagnostic use in humans or animals. Not for animal or human consumption. Purchasers shall not, and agree not to enable third parties to, analyze, copy, reverse engineer or otherwise attempt to determine the structure or sequence of the product.

Scan me for more info!



www.unibiotech.in



An ISO 9001:2015 Certified Company

Order now and enjoy our services anywhere in India!

Tel: +91 9910 73 8844 | Email: info@unibiotech.in

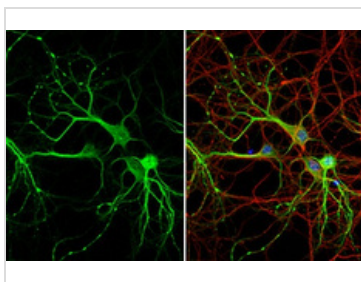
Reg. Address : A-33, 2nd Floor, Ring Road, Rajouri Garden, New Delhi-110027 (INDIA)

Date 2024 / 12 / 16 Page 1 of 2



For full product information, images and publications, please visit our [website](#).

DATA IMAGES



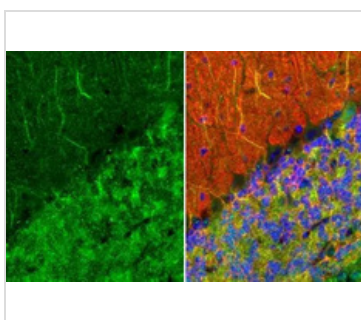
GTX637253 ICC/IF Image

MAP2 antibody [HL1655] detects MAP2 protein in dendrite/axon, by immunofluorescent analysis.
Sample: DIV9 rat E18 primary hippocampal neuron cells were fixed in 4% paraformaldehyde at RT for 15 min.

Green: MAP2 stained by MAP2 antibody [HL1655] (GTX637253) diluted at 1:250.

Red: Tau, an axon marker, stained by Tau antibody [GT287] (GTX634809) diluted at 1:500.

Blue: Fluoroshield with DAPI (GTX30920).



GTX637253 IHC-P Image

MAP2 antibody [HL1655] detects MAP2 protein by immunohistochemical analysis.

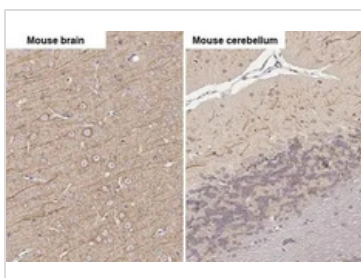
Sample: Paraffin-embedded mouse cerebellum.

Green: MAP2 stained by MAP2 antibody [HL1655] (GTX637253) diluted at 1:100.

Red: beta Tubulin 3/ Tuj1, a Cytoskeleton marker, stained by beta Tubulin 3/ Tuj1 antibody [GT11710] (GTX631836) diluted at 1:500.

Blue: Fluoroshield with DAPI (GTX30920).

Antigen Retrieval: Citrate buffer, pH 6.0, 15 min



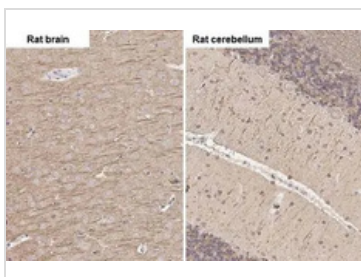
GTX637253 IHC-P Image

MAP2 antibody [HL1655] detects MAP2 protein by immunohistochemical analysis.

Sample: Paraffin-embedded mouse tissues.

MAP2 stained by MAP2 antibody [HL1655] (GTX637253) diluted at 1:100.

Antigen Retrieval: Citrate buffer, pH 6.0, 15 min



GTX637253 IHC-P Image

MAP2 antibody [HL1655] detects MAP2 protein by immunohistochemical analysis.

Sample: Paraffin-embedded rat tissues.

MAP2 stained by MAP2 antibody [HL1655] (GTX637253) diluted at 1:100.

Antigen Retrieval: Citrate buffer, pH 6.0, 15 min

Scan me for more info!



www.unibiotech.in



For full product information, images and publications, please visit our [website](https://www.unibiotech.in).



An ISO 9001:2015 Certified Company

Order now and enjoy our services anywhere in India!

Tel: +91 9910 73 8844 | Email: info@unibiotech.in

Reg. Address : A-33, 2nd Floor, Ring Road, Rajouri Garden, New Delhi-110027 (INDIA)

Date 2024 / 12 / 16 Page 2 of 2