

NFkB p105 antibody [HL1784]

Cat. No. GTX637436

Host	Rabbit
Clonality	Monoclonal
Isotype	IgG1
Application	Human
Reactivity	

Package

100 µl, 25 µl

APPLICATION**Application Note**

*Optimal dilutions/concentrations should be determined by the researcher.

Suggested dilution	Recommended dilution
WB	1:500-1:3000

Not tested in other applications.

Observed MW 120 kDa.

PROPERTIES

Form Liquid

Buffer PBS

Preservative No preservative

Storage Store as concentrated solution. Centrifuge briefly prior to opening vial. For short-term storage (1-2 weeks), store at 4°C. For long-term storage, aliquot and store at -20°C or below. Avoid multiple freeze-thaw cycles.

Concentration 2 mg/ml (Please refer to the vial label for the specific concentration.)

Immunogen Recombinant protein encompassing a sequence within the center region of human NFkB p105. The exact sequence is proprietary.

Purification Affinity purified by Protein A.

Conjugation Unconjugated

Note For laboratory research use only. Not for any clinical, therapeutic, or diagnostic use in humans or animals. Not for animal or human consumption.

Purchasers shall not, and agree not to enable third parties to, analyze, copy, reverse engineer or otherwise attempt to determine the structure or sequence of the product.

Scan me for more info!



www.unibiotech.in



For full product information, images and publications, please visit our [website](https://www.unibiotech.in).



An ISO 9001:2015 Certified Company

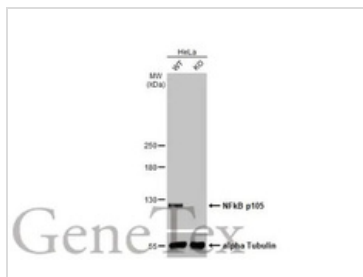
Order now and enjoy our services anywhere in India!

Tel: +91 9910 73 8844 | Email: info@unibiotech.in

Reg. Address : A-33, 2nd Floor, Ring Road, Rajouri Garden, New Delhi-110027 (INDIA)

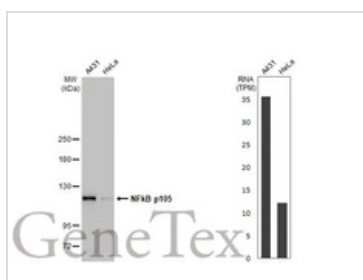
Date 2024 / 12 / 20 Page 1 of 2

DATA IMAGES



GTX637436 WB Image

Wild-type (WT) and NFKB1 knockout (KO) HeLa cell extracts (30 μg) were separated by 5% SDS-PAGE, and the membrane was blotted with NfκB p105 antibody [HL1784] (GTX637436) diluted at 1:500. The HRP-conjugated anti-rabbit IgG antibody (GTX213110-01) was used to detect the primary antibody, and the signal was developed with Trident ECL plus-Enhanced.



GTX637436 WB Image

Various whole cell extracts (30 μg) were separated by 5% SDS-PAGE, and the membrane was blotted with NfκB p105 antibody [HL1784] (GTX637436) diluted at 1:500. The HRP-conjugated anti-rabbit IgG antibody (GTX213110-01) was used to detect the primary antibody, and the signal was developed with Trident ECL plus-Enhanced. Corresponding RNA expression data for the same cell lines are based on Human Protein Atlas program.

Scan me for more info!



www.unibiotech.in



Order now and enjoy our services anywhere in India!

Tel: +91 9910 73 8844 | Email: info@unibiotech.in

Reg. Address : A-33, 2nd Floor, Ring Road, Rajouri Garden, New Delhi-110027 (INDIA)

Date 2024 / 12 / 20 Page 2 of 2



For full product information, images and publications, please visit our [website](https://www.unibiotech.in).