

EpCAM antibody [HL1339]

Cat. No. GTX636759

Host	Rabbit
Clonality	Monoclonal
Isotype	IgG
Application	WB, ICC/IF, IHC-P, IHC-Fr, FACS
Reactivity	Human, Mouse, Rat

Reference (1)
 Package
 100 µl, 25 µl

APPLICATION

Application Note

*Optimal dilutions/concentrations should be determined by the researcher.

Suggested dilution	Recommended dilution
WB	1:500-1:3000
ICC/IF	Assay dependent
IHC-P	Assay dependent
IHC-Fr	Assay dependent
FACS	Assay dependent

Not tested in other applications.

Calculated MW 35 kDa. ([Note](#))

Product Note This antibody was raised against human EpCAM Extracellular domain.

PROPERTIES

Form	Liquid
Buffer	PBS
Preservative	No preservative
Storage	Store as concentrated solution. Centrifuge briefly prior to opening vial. For short-term storage (1-2 weeks), store at 4°C. For long-term storage, aliquot and store at -20°C or below. Avoid multiple freeze-thaw cycles.
Concentration	0.5 mg/ml (Please refer to the vial label for the specific concentration.)
Immunogen	Recombinant protein encompassing a sequence within the Extracellular domain of human EpCAM. The exact sequence is proprietary.
Purification	Affinity purified by Protein A.
Conjugation	Unconjugated

Scan me for more info!



www.unibiotech.in



For full product information, images and publications, please visit our [website](#).



An ISO 9001:2015 Certified Company

Order now and enjoy our services anywhere in India!

Tel: +91 9910 73 8844 | Email: info@unibiotech.in

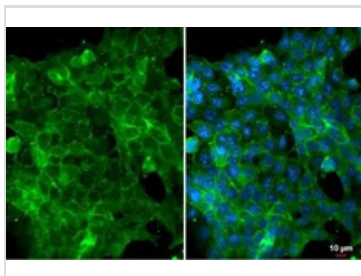
Reg. Address : A-33, 2nd Floor, Ring Road, Rajouri Garden, New Delhi-110027 (INDIA)

Date 2024 / 12 / 15 Page 1 of 2

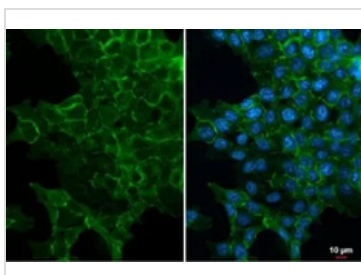
Note

For laboratory research use only. Not for any clinical, therapeutic, or diagnostic use in humans or animals. Not for animal or human consumption.
 Purchasers shall not, and agree not to enable third parties to, analyze, copy, reverse engineer or otherwise attempt to determine the structure or sequence of the product.

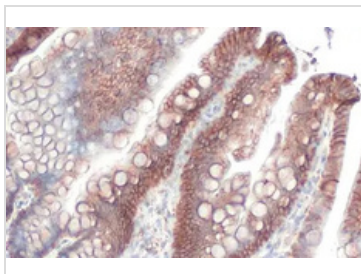
DATA IMAGES



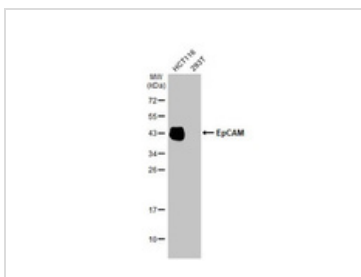
GTX636759 ICC/IF Image
 EpCAM antibody [HL1339] detects EpCAM protein at cell membrane and cell junction by immunofluorescent analysis.
 Sample: HCT116 cells were fixed in ice-cold MeOH for 5 min.
 Green: EpCAM stained by EpCAM antibody [HL1339] (GTX636759) diluted at 1:500.
 Blue: Fluoroshield with DAPI (GTX30920).



GTX636759 ICC/IF Image
 EpCAM antibody [HL1339] detects EpCAM protein at cell membrane and cell junction by immunofluorescent analysis.
 Sample: HCT116 cells were fixed in ice-cold MeOH for 5 min.
 Green: EpCAM stained by EpCAM antibody [HL1339] (GTX636759) diluted at 1:500.
 Blue: Fluoroshield with DAPI (GTX30920).



GTX636759 IHC-P Image
 EpCAM antibody [HL1339] detects EpCAM protein at cell membrane by immunohistochemical analysis.
 Sample: Paraffin-embedded rat colon.
 EpCAM stained by EpCAM antibody [HL1339] (GTX636759) diluted at 1:50.
 Antigen Retrieval: Citrate buffer, pH 6.0, 15 min



GTX636759 WB Image
 Various whole cell extracts (30 µg) were separated by 12% SDS-PAGE, and the membrane was blotted with EpCAM antibody [HL1339] (GTX636759) diluted at 1:500. The HRP-conjugated anti-rabbit IgG antibody (GTX213110-01) was used to detect the primary antibody.

Scan me for more info!



www.unibiotech.in



For full product information, images and publications, please visit our [website](http://www.unibiotech.in).



An ISO 9001:2015 Certified Company

Order now and enjoy our services anywhere in India!

Tel: +91 9910 73 8844 | Email: info@unibiotech.in

Reg. Address : A-33, 2nd Floor, Ring Road, Rajouri Garden, New Delhi-110027 (INDIA)

Date 2024 / 12 / 15 Page 2 of 2