

CTLA4 antibody [HL2732]

Cat. No. GTX639560

Host	Rabbit
Clonality	Monoclonal
Isotype	IgG
Application	WB, IHC-P
Reactivity	Human, Mouse, Rat

Pack age
100 µl, 25 µl

APPLICATION

Application Note

*Optimal dilutions/concentrations should be determined by the researcher.

Suggested dilution	Recommended dilution
WB	Assay dependent
IHC-P	1:100-1:1000

Not tested in other applications.

Observed MW 25 kDa.

PROPERTIES

Form	Liquid
Buffer	PBS
Preservative	No preservative
Storage	Store as concentrated solution. Centrifuge briefly prior to opening vial. For short-term storage (1-2 weeks), store at 4°C. For long-term storage, aliquot and store at -20°C or below. Avoid multiple freeze-thaw cycles.
Concentration	1 mg/ml (Please refer to the vial label for the specific concentration.)
Immunogen	Recombinant fragment of mouse CTLA4.
Purification	Affinity purified by Protein A.
Conjugation	Unconjugated

For laboratory research use only. Not for any clinical, therapeutic, or diagnostic use in humans or animals. Not for animal or human consumption.

Note Purchasers shall not, and agree not to enable third parties to, analyze, copy, reverse engineer or otherwise attempt to determine the structure or sequence of the product.

Scan me for more info!



For full product information, images and publications, please visit our [website](https://www.unibiotech.in).



www.unibiotech.in



An ISO 9001:2015 Certified Company

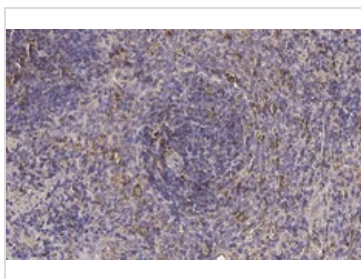
Order now and enjoy our services anywhere in India!

Tel: +91 9910 73 8844 | Email: info@unibiotech.in

Reg. Address : A-33, 2nd Floor, Ring Road, Rajouri Garden, New Delhi-110027 (INDIA)

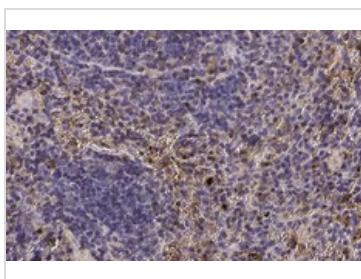
Date 2024 / 12 / 13 Page 1 of 2

DATA IMAGES



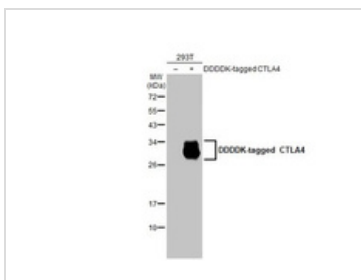
GTX639560 IHC-P Image

CTLA4 antibody [HL2732] detects CTLA4 protein at cell membrane by immunohistochemical analysis.
 Sample: Paraffin-embedded rat spleen.
 CTLA4 stained by CTLA4 antibody [HL2732] (GTX639560) diluted at 1:100.
 Antigen Retrieval: Citrate buffer, pH 6.0, 15 min



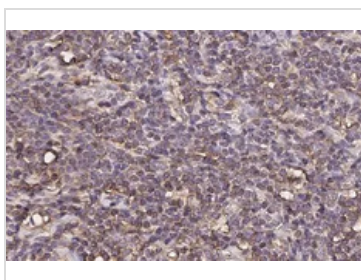
GTX639560 IHC-P Image

CTLA4 antibody [HL2732] detects CTLA4 protein at cell membrane by immunohistochemical analysis.
 Sample: Paraffin-embedded mouse spleen.
 CTLA4 stained by CTLA4 antibody [HL2732] (GTX639560) diluted at 1:300.
 Antigen Retrieval: Citrate buffer, pH 6.0, 15 min



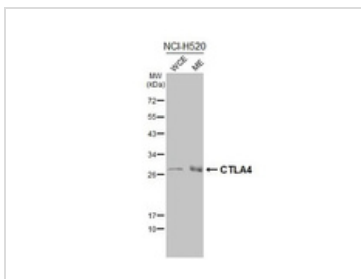
GTX639560 WB Image

Non-transfected (-) and transfected (+) 293T whole cell extracts (30 µg) were separated by 12% SDS-PAGE, and the membrane was blotted with CTLA4 antibody [HL2732] (GTX639560) diluted at 1:5000. The HRP-conjugated anti-rabbit IgG antibody (GTX213110-01) was used to detect the primary antibody.



GTX639560 IHC-P Image

CTLA4 antibody [HL2732] detects CTLA4 protein by immunohistochemical analysis.
 Sample: Paraffin-embedded human Hodgkin's lymphoma.
 CTLA4 stained by CTLA4 antibody [HL2732] (GTX639560) diluted at 1:500.
 Antigen Retrieval: Citrate buffer, pH 6.0, 15 min



GTX639560 WB Image

NCI-H520 whole cell and membrane extracts (30 µg) were separated by 12% SDS-PAGE, and the membrane was blotted with CTLA4 antibody [HL2732] (GTX639560) diluted at 1:1000. The HRP-conjugated anti-rabbit IgG antibody (GTX213110-01) was used to detect the primary antibody. (WCE: whole cell extract; ME: membrane extract)

Scan me for more info!



www.unibiotech.in



For full product information, images and publications, please visit our [website](http://www.unibiotech.in).



An ISO 9001:2015 Certified Company

Order now and enjoy our services anywhere in India!

Tel: +91 9910 73 8844 | Email: info@unibiotech.in

Reg. Address : A-33, 2nd Floor, Ring Road, Rajouri Garden, New Delhi-110027 (INDIA)

Date 2024 / 12 / 13 Page 2 of 2