

C3 / C3b antibody [C3], C-term

Cat. No. GTX101316

Host	Rabbit
Clonality	Polyclonal
Isotype	IgG
Application	WB, ICC/IF, IHC-P, IP, Immunosubtraction
Reactivity	Human, Mouse

Reference (5)

Package

100 µl, 25 µl

APPLICATION

Application Note

*Optimal dilutions/concentrations should be determined by the researcher.

Suggested dilution	Recommended dilution
WB	1:500-1:3000
ICC/IF	1:100-1:1000
IHC-P	1:100-1:1000
IP	1:100-1:500
Immunosubtraction	Assay dependent

Not tested in other applications.

Calculated MW 187 kDa. ([Note](#))

Product Note The mouse reactivity of this antibody is based on mouse IHC-P testing and may be not suitable for mouse WB assay.

PROPERTIES

Form	Liquid
Buffer	PBS, 1% BSA, 20% Glycerol
Preservative	0.025% ProClin 300
Storage	Store as concentrated solution. Centrifuge briefly prior to opening vial. For short-term storage (1-2 weeks), store at 4°C. For long-term storage, aliquot and store at -20°C or below. Avoid multiple freeze-thaw cycles.
Concentration	0.08 mg/ml (Please refer to the vial label for the specific concentration.)
Immunogen	Recombinant protein encompassing a sequence within the C-terminus region of human C3. The exact sequence is proprietary.
Purification	Purified by antigen-affinity chromatography.
Conjugation	Unconjugated

Scan me for more info!



www.unibiotech.in



For full product information, images and publications, please visit our [website](#).



An ISO 9001:2015 Certified Company

Order now and enjoy our services anywhere in India!

Tel: +91 9910 73 8844 | Email: info@unibiotech.in

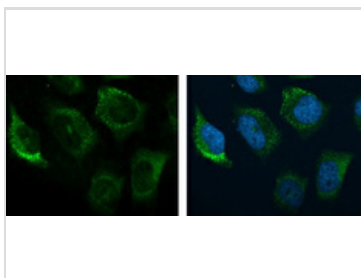
Reg. Address : A-33, 2nd Floor, Ring Road, Rajouri Garden, New Delhi-110027 (INDIA)

Date 2024 / 12 / 13 Page 1 of 2

Note

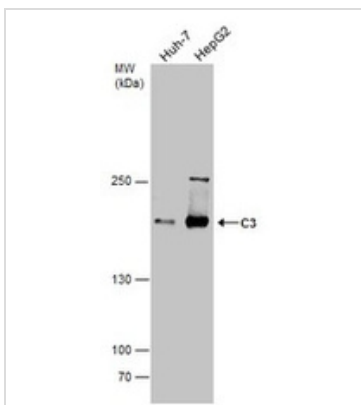
For laboratory research use only. Not for any clinical, therapeutic, or diagnostic use in humans or animals. Not for animal or human consumption.
 Purchasers shall not, and agree not to enable third parties to, analyze, copy, reverse engineer or otherwise attempt to determine the structure or sequence of the product.

DATA IMAGES



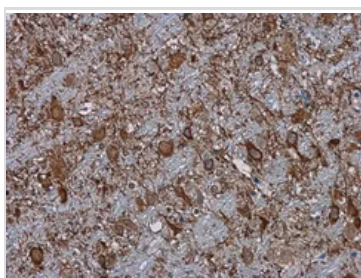
GTX101316 ICC/IF Image

C3 antibody [C3], C-term detects C3 protein at cytoplasm by immunofluorescent analysis.
 Sample: HeLa cells were fixed in 4% paraformaldehyde at RT for 15 min.
 Green: C3 protein stained by C3 antibody [C3], C-term (GTX101316) diluted at 1:200.
 Blue: Hoechst 33342 staining.



GTX101316 WB Image

Various whole cell extracts (30 µg) were separated by 5% SDS-PAGE, and the membrane was blotted with C3 antibody (GTX101316) diluted at 1:1000.



GTX101316 IHC-P Image

C3 antibody [C3], C-term detects C3 protein at cytoplasm in mouse brain by immunohistochemical analysis.
 Sample: Paraffin-embedded mouse brain.
 C3 antibody [C3], C-term (GTX101316) diluted at 1:500.
 Antigen Retrieval: Citrate buffer, pH 6.0, 15 min

Scan me for more info!



For full product information, images and publications, please visit our [website](http://www.unibiotech.in).



www.unibiotech.in



An ISO 9001:2015 Certified Company

Order now and enjoy our services anywhere in India!

Tel: +91 9910 73 8844 | Email: info@unibiotech.in

Reg. Address : A-33, 2nd Floor, Ring Road, Rajouri Garden, New Delhi-110027 (INDIA)

Date 2024 / 12 / 13 Page 2 of 2