

Claudin 3 antibody [HL1527]

Cat. No. GTX637000

Host	Rabbit
Clonality	Monoclonal
Isotype	IgG
Application	WB, ICC/IF, IHC-P
Reactivity	Human

Package
100 µl, 25 µl

APPLICATION

Application Note

*Optimal dilutions/concentrations should be determined by the researcher.

Suggested dilution	Recommended dilution
WB	1:500-1:3000
ICC/IF	Assay dependent
IHC-P	Assay dependent

Not tested in other applications.

Calculated MW 23 kDa. ([Note](#))

Product Note This antibody was raised against human Claudin 3 Intracellular domain.

PROPERTIES

Form	Liquid
Buffer	PBS
Preservative	No preservative
Storage	Store as concentrated solution. Centrifuge briefly prior to opening vial. For short-term storage (1-2 weeks), store at 4°C. For long-term storage, aliquot and store at -20°C or below. Avoid multiple freeze-thaw cycles.
Concentration	1 mg/ml (Please refer to the vial label for the specific concentration.)
Immunogen	Synthetic peptide encompassing a sequence within the Intracellular domain of human Claudin 3. The exact sequence is proprietary.
Purification	Affinity purified by Protein A.
Conjugation	Unconjugated

Scan me for more info!



For full product information, images and publications, please visit our [website](#).



www.unibiotech.in



An ISO 9001:2015 Certified Company

Order now and enjoy our services anywhere in India!

Tel: +91 9910 73 8844 | Email: info@unibiotech.in

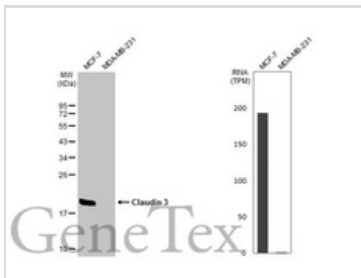
Reg. Address : A-33, 2nd Floor, Ring Road, Rajouri Garden, New Delhi-110027 (INDIA)

Date 2024 / 12 / 13 Page 1 of 2

Note

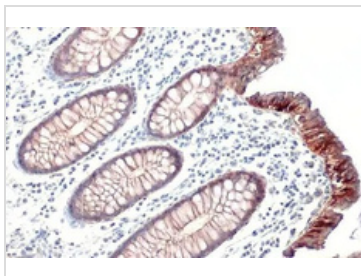
For laboratory research use only. Not for any clinical, therapeutic, or diagnostic use in humans or animals. Not for animal or human consumption.
 Purchasers shall not, and agree not to enable third parties to, analyze, copy, reverse engineer or otherwise attempt to determine the structure or sequence of the product.

DATA IMAGES



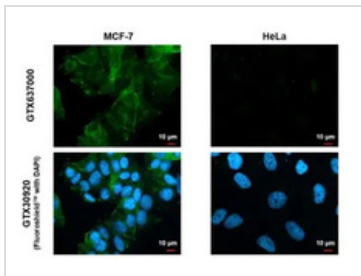
GTX637000 WB Image

Various whole cell extracts (30 µg) were separated by 12% SDS-PAGE, and the membrane was blotted with Claudin 3 antibody [HL1527] (GTX637000) diluted at 1:1000. The HRP-conjugated anti-rabbit IgG antibody (GTX213110-01) was used to detect the primary antibody. Corresponding RNA expression data for the same cell lines are based on Human Protein Atlas program.



GTX637000 IHC-P Image

Claudin 3 antibody [HL1527] detects Claudin 3 protein at cell membrane by immunohistochemical analysis.
 Sample: Paraffin-embedded human colon.
 Claudin 3 stained by Claudin 3 antibody [HL1527] (GTX637000) diluted at 1:100.
 Antigen Retrieval: Citrate buffer, pH 6.0, 15 min



GTX637000 ICC/IF Image

Claudin 3 antibody [HL1527] detects Claudin 3 protein at cell membrane by immunofluorescent analysis.
 Sample: MCF-7 and HeLa cells were fixed in 4% paraformaldehyde at RT for 15 min.
 Green: Claudin 3 stained by Claudin 3 antibody [HL1527] (GTX637000) diluted at 1:500.
 Blue: Fluoroshield with DAPI (GTX30920).

Scan me for more info!



www.unibiotech.in



For full product information, images and publications, please visit our [website](http://www.unibiotech.in).



An ISO 9001:2015 Certified Company

Order now and enjoy our services anywhere in India!

Tel: +91 9910 73 8844 | Email: info@unibiotech.in

Reg. Address : A-33, 2nd Floor, Ring Road, Rajouri Garden, New Delhi-110027 (INDIA)

Date 2024 / 12 / 13 Page 2 of 2