

# PD-L1 antibody [HL1041]

## Cat. No. GTX635975

<b>Host</b>	Rabbit
<b>Clonality</b>	Monoclonal
<b>Isotype</b>	IgG
<b>Application</b>	WB, ICC/IF, IHC-P
<b>Reactivity</b>	Human

Reference ( 3 )

★★★★★ Review ( 1 )

Package  
100 µl, 25 µl

### APPLICATION

#### Application Note

\*Optimal dilutions/concentrations should be determined by the researcher.

Suggested dilution	Recommended dilution
WB	1:500-1:3000
ICC/IF	Assay dependent
IHC-P	Assay dependent

Not tested in other applications.

Calculated MW 33 kDa. ( [Note](#) )

Product Note This antibody was raised against human PD-L1 Intracellular domain, and it does not cross with PD-L2 protein.

### PROPERTIES

Form	Liquid
Buffer	PBS
Preservative	No preservative
Storage	Store as concentrated solution. Centrifuge briefly prior to opening vial. For short-term storage (1-2 weeks), store at 4°C. For long-term storage, aliquot and store at -20°C or below. Avoid multiple freeze-thaw cycles.
Concentration	1 mg/ml (Please refer to the vial label for the specific concentration.)
Immunogen	Synthetic peptide encompassing a sequence within the Intracellular domain of human PD-L1. The exact sequence is proprietary.
Purification	Affinity purified by Protein A.
Conjugation	Unconjugated

Scan me for more info!



www.unibiotech.in



For full product information, images and publications, please visit our [website](#).



An ISO 9001:2015 Certified Company

Order now and enjoy our services anywhere in India!

Tel: +91 9910 73 8844 | Email: [info@unibiotech.in](mailto:info@unibiotech.in)

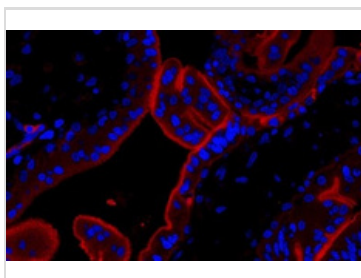
Reg. Address : A-33, 2nd Floor, Ring Road, Rajouri Garden, New Delhi-110027 (INDIA)

Date 2024 / 12 / 18 Page 1 of 2

Note

For laboratory research use only. Not for any clinical, therapeutic, or diagnostic use in humans or animals. Not for animal or human consumption. Purchasers shall not, and agree not to enable third parties to, analyze, copy, reverse engineer or otherwise attempt to determine the structure or sequence of the product.

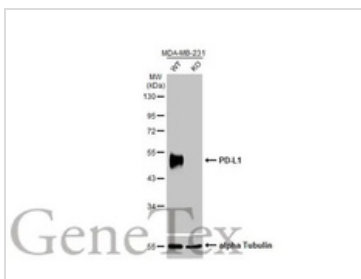
DATA IMAGES



GTX635975 IHC-P Image

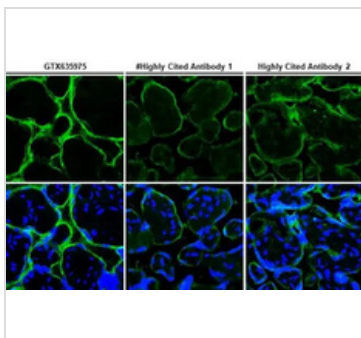
PD-L1 antibody [HL1041] detects PD-L1 protein at cell membrane by immunohistochemical analysis. Sample: Human Placenta.

Green: PD-L1 stained by Dylight594-conjugated PD-L1 antibody [HL1041] (GTX635975) diluted at 1:1000.



GTX635975 WB Image

Wild-type (WT) and PDL1 knockout (KO) MDA-MB-231 cell extracts (30 µg) were separated by 10% SDS- PAGE, and the membrane was blotted with PD-L1 antibody [HL1041] (GTX635975) diluted at 1:2000. The HRP-conjugated anti-rabbit IgG antibody (GTX213110-01) was used to detect the primary antibody.



GTX635975 IHC-P Image

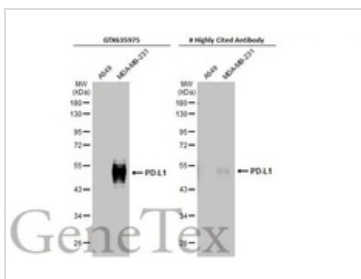
PD-L1 antibody [HL1041] detects PD-L1 protein at cell membrane by immunohistochemical analysis. Sample: Paraffin-embedded human placenta.

PD-L1 stained by PD-L1 antibody [HL1041] (GTX635975) diluted at 1:1000 and competitor's antibody diluted at 1:1000.

Blue: Fluoroshield with DAPI (GTX30920).

Antigen Retrieval: Citrate buffer, pH 6.0, 15 min

\*Competitor's antibody is not affiliated with GeneTex and does not endorse this product.



GTX635975 WB Image

Various whole cell extracts (30 µg) were separated by 10% SDS-PAGE, and the membranes were blotted with PD-L1 antibody [HL1041] (GTX635975) diluted at 1:2000 and competitor's antibody diluted at 1:200. The HRP-conjugated anti-rabbit IgG antibody (GTX213110-01) was used to detect the primary antibody.

\*The competitor is not affiliated with GeneTex and does not endorse this product.

Scan me for more info!



www.unibiotech.in



For full product information, images and publications, please visit our [website](http://www.unibiotech.in).



Order now and enjoy our services anywhere in India!

Tel: +91 9910 73 8844 | Email: [info@unibiotech.in](mailto:info@unibiotech.in)

Reg. Address : A-33, 2nd Floor, Ring Road, Rajouri Garden, New Delhi-110027 (INDIA)

Date 2024 / 12 / 18 Page 2 of 2