

# GAPDH antibody

## Cat. No. GTX100118

<b>Host</b>	Rabbit
<b>Clonality</b>	Polyclonal
<b>Isotype</b>	IgG
<b>Application</b>	WB, ICC/IF, IHC-P, IP
<b>Reactivity</b>	Human, Mouse, Rat, Zebrafish, Rabbit, Drosophila, Bovine, Dog, Hamster, Chicken, Pig, Monkey, Caenorhabditis elegans, E. coli, Mosquito, Nematode, Pika, Plant, Fish, Bacteria, Insect, milkfish

Reference ( 1110 )

★★★★★ Review ( 19 )

Package

100 µl, 25 µl

### PRODUCT

**Summary** GAPDH antibody recognizes glyceraldehyde-3-phosphate dehydrogenase (GAPDH) protein, a glycolytic enzyme of ~37 kDa that forms a tetramer. Because of its widespread expression, GAPDH is commonly used as an internal control for various protein assays, particularly western blot, to validate both the amount and quality of the loaded lysate samples.

### APPLICATION

#### Application Note

\*Optimal dilutions/concentrations should be determined by the researcher.

Suggested dilution	Recommended dilution
WB	1:5000-1:100000
ICC/IF	1:100-1:1000
IHC-P	1:100-1:1000
IP	1:100-1:500

Not tested in other applications.

Calculated MW 36 kDa. ([Note](#))

### PROPERTIES

<b>Form</b>	Liquid
<b>Buffer</b>	PBS, 1% BSA, 20% Glycerol
<b>Preservative</b>	0.025% ProClin 300
<b>Storage</b>	Store as concentrated solution. Centrifuge briefly prior to opening vial. For short-term storage (1-2 weeks), store at 4°C. For long-term storage, aliquot and store at -20°C or below. Avoid multiple freeze-thaw cycles.
<b>Concentration</b>	0.08 mg/ml (Please refer to the vial label for the specific concentration.)
<b>Immunogen</b>	Recombinant protein encompassing a sequence within the center region of human GAPDH. The exact sequence is proprietary.

Scan me for more info!



www.unibiotech.in



For full product information, images and publications, please visit our [website](#).



An ISO 9001:2015 Certified Company

Order now and enjoy our services anywhere in India!

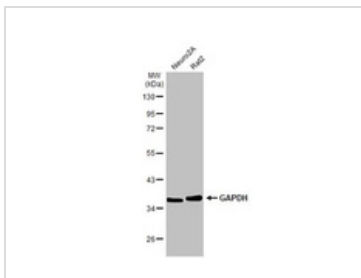
Tel: +91 9910 73 8844 | Email: [info@unibiotech.in](mailto:info@unibiotech.in)

Reg. Address : A-33, 2nd Floor, Ring Road, Rajouri Garden, New Delhi-110027 (INDIA)

Date 2024 / 12 / 15 Page 1 of 2

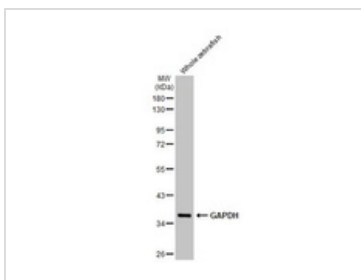
Purification	Purified by antigen-affinity chromatography.
Conjugation	Unconjugated
Note	For laboratory research use only. Not for any clinical, therapeutic, or diagnostic use in humans or animals. Not for animal or human consumption. Purchasers shall not, and agree not to enable third parties to, analyze, copy, reverse engineer or otherwise attempt to determine the structure or sequence of the product.

## DATA IMAGES



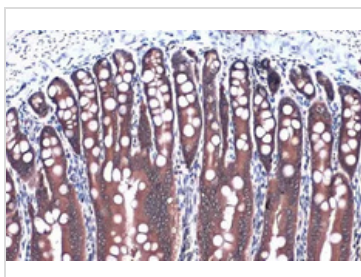
GTX100118 WB Image

Various whole cell extracts (30 µg) were separated by 10% SDS-PAGE, and the membrane was blotted with GAPDH antibody (GTX100118) diluted at 1:10000. The HRP-conjugated anti-rabbit IgG antibody (GTX213110-01) was used to detect the primary antibody.



GTX100118 WB Image

Whole cell extract (50 µg) was separated by 10% SDS-PAGE, and the membrane was blotted with GAPDH antibody (GTX100118) diluted at 1:5000. The HRP-conjugated anti-rabbit IgG antibody (GTX213110-01) was used to detect the primary antibody.



GTX100118 IHC-P Image

GAPDH antibody detects GAPDH protein at cytoplasm by immunohistochemical analysis.  
Sample: Paraffin-embedded human duodenum.  
GAPDH stained by GAPDH antibody (GTX100118) diluted at 1:500.  
Antigen Retrieval: Citrate buffer, pH 6.0, 15 min

Scan me for more info!



For full product information, images and publications, please visit our [website](http://www.unibiotech.in).



[www.unibiotech.in](http://www.unibiotech.in)



An ISO 9001:2015 Certified Company

Order now and enjoy our services anywhere in India!

Tel: +91 9910 73 8844 | Email: [info@unibiotech.in](mailto:info@unibiotech.in)

Reg. Address : A-33, 2nd Floor, Ring Road, Rajouri Garden, New Delhi-110027 (INDIA)

Date 2024 / 12 / 15 Page 2 of 2