

# Respiratory Syncytial virus Nucleoprotein antibody [HL1245]

## Cat. No. GTX636647

<b>Host</b>	Rabbit
<b>Clonality</b>	Monoclonal
<b>Isotype</b>	IgG
<b>Application</b>	WB, ELISA, Sandwich ELISA
<b>Reactivity</b>	Respiratory syncytial virus

**Package**  
100 µl, 25 µl

### APPLICATION

#### Application Note

\*Optimal dilutions/concentrations should be determined by the researcher.

Suggested dilution	Recommended dilution
WB	Assay dependent
ELISA	Assay dependent
Sandwich ELISA	Assay dependent

Note : Capture: GTX636647, Detection: GTX636705.

Please notice that the detected antibody needs to be conjugated to HRP to function when paired with capture antibodies. Please contact us for custom HRP-conjugated antibody.

Not tested in other applications.

### PROPERTIES

<b>Form</b>	Liquid
<b>Buffer</b>	PBS
<b>Preservative</b>	No preservative
<b>Storage</b>	Store as concentrated solution. Centrifuge briefly prior to opening vial. For short-term storage (1-2 weeks), store at 4°C. For long-term storage, aliquot and store at -20°C or below. Avoid multiple freeze-thaw cycles.
<b>Concentration</b>	1 mg/ml (Please refer to the vial label for the specific concentration.)
<b>Immunogen</b>	Recombinant protein encompassing a sequence within the C-term region of Respiratory Syncytial virus Nucleoprotein. (strain A2)
<b>Purification</b>	Affinity purified by Protein A.
<b>Conjugation</b>	Unconjugated

Scan me for more info!



For full product information, images and publications, please visit our [website](#).



[www.unibiotech.in](http://www.unibiotech.in)



An ISO 9001:2015 Certified Company

Order now and enjoy our services anywhere in India!

Tel: +91 9910 73 8844 | Email: [info@unibiotech.in](mailto:info@unibiotech.in)

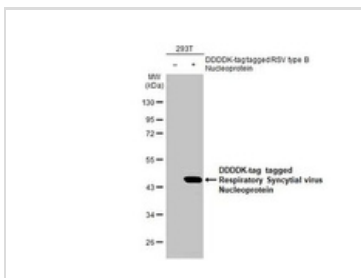
Reg. Address : A-33, 2nd Floor, Ring Road, Rajouri Garden, New Delhi-110027 (INDIA)

Date 2024 / 12 / 18 Page 1 of 2

Note

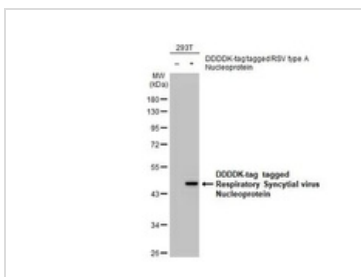
For laboratory research use only. Not for any clinical, therapeutic, or diagnostic use in humans or animals. Not for animal or human consumption. Purchasers shall not, and agree not to enable third parties to, analyze, copy, reverse engineer or otherwise attempt to determine the structure or sequence of the product.

DATA IMAGES



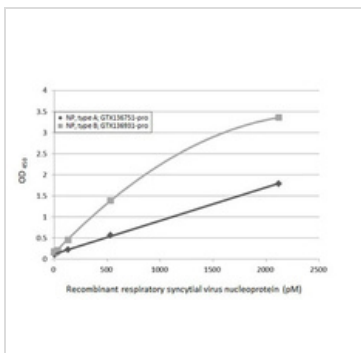
GTX636647 WB Image

Non-transfected (-) and transfected (+) 293T whole cell extracts (30 µg) were separated by 10% SDS-PAGE, and the membrane was blotted with Respiratory Syncytial virus Nucleoprotein antibody [HL1245] (GTX636647) diluted at 1:5000. The HRP-conjugated anti-rabbit IgG antibody (GTX213110-01) was used to detect the primary antibody.



GTX636647 WB Image

Non-transfected (-) and transfected (+) 293T whole cell extracts (30 µg) were separated by 10% SDS-PAGE, and the membrane was blotted with Respiratory Syncytial virus Nucleoprotein antibody [HL1245] (GTX636647) diluted at 1:5000. The HRP-conjugated anti-rabbit IgG antibody (GTX213110-01) was used to detect the primary antibody.



GTX636647 ELISA Image

Sandwich ELISA detection of recombinant nucleoproteins (NP) derived from different strains of respiratory syncytial virus (i.e., type A; type B) using antibodies as below.

Capture: Respiratory Syncytial virus Nucleoprotein antibody [HL1245] (GTX636647) (5 µg/mL)  
 Detection: HRP-conjugated Respiratory Syncytial virus Nucleoprotein antibody [HL1291] (GTX636705) (1 µg/mL)

Please notice that GTX636705 needs to be conjugated to HRP to function as the detection antibody when paired with GTX636647. Please contact us for custom HRP-conjugated antibody.

Scan me for more info!



www.unibiotech.in



For full product information, images and publications, please visit our [website](http://www.unibiotech.in).



Order now and enjoy our services anywhere in India!

Tel: +91 9910 73 8844 | Email: [info@unibiotech.in](mailto:info@unibiotech.in)

Reg. Address : A-33, 2nd Floor, Ring Road, Rajouri Garden, New Delhi-110027 (INDIA)

Date 2024 / 12 / 18 Page 2 of 2