

## ACE2 antibody [HL1092]

Cat. No. GTX636265

Host	Rabbit
Clonality	Monoclonal
Isotype	IgG
Application	WB, ICC/IF, IHC-P
Reactivity	Human, Cat, Dog, African green monkey

Package  
100 µl, 25 µl

## APPLICATION

## Application Note

\*Optimal dilutions/concentrations should be determined by the researcher.

Suggested dilution	Recommended dilution
WB	Assay dependent
ICC/IF	Assay dependent
IHC-P	Assay dependent

Not tested in other applications.

Observed MW 120-130 kDa.

Product Note This antibody was raised against human ACE2 Extracellular domain. We do not recommend use of this product for Mouse samples.

## PROPERTIES

Form	Liquid
Buffer	PBS
Preservative	No preservative
Storage	Store as concentrated solution. Centrifuge briefly prior to opening vial. For short-term storage (1-2 weeks), store at 4°C. For long-term storage, aliquot and store at -20°C or below. Avoid multiple freeze-thaw cycles.
Concentration	1 mg/ml (Please refer to the vial label for the specific concentration.)
Immunogen	Recombinant protein encompassing a sequence within the Extracellular domain of human ACE2. The exact sequence is proprietary.
Purification	Affinity purified by Protein A.
Conjugation	Unconjugated

Scan me for more info!



www.unibiotech.in



For full product information, images and publications, please visit our [website](#).



An ISO 9001:2015 Certified Company

Order now and enjoy our services anywhere in India!

Tel: +91 9910 73 8844 | Email: [info@unibiotech.in](mailto:info@unibiotech.in)

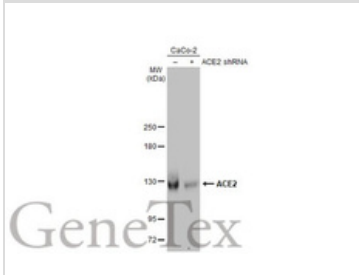
Reg. Address : A-33, 2nd Floor, Ring Road, Rajouri Garden, New Delhi-110027 (INDIA)

Date 2024 / 12 / 12 Page 1 of 2

Note

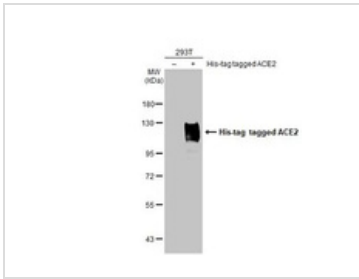
For laboratory research use only. Not for any clinical, therapeutic, or diagnostic use in humans or animals. Not for animal or human consumption. Purchasers shall not, and agree not to enable third parties to, analyze, copy, reverse engineer or otherwise attempt to determine the structure or sequence of the product.

DATA IMAGES



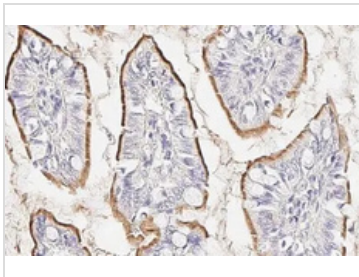
GTX636265 WB Image

Non-transfected (-) and transfected (+) 293T whole cell extracts (50 µg) were separated by 5% SDS-PAGE, and the membrane was blotted with ACE2 antibody [HL1092] (GTX636265) diluted at 1:1000. The HRP-conjugated anti-rabbit IgG antibody (GTX213110-01) was used to detect the primary antibody, and the signal was developed with Trident ECL plus-Enhanced.



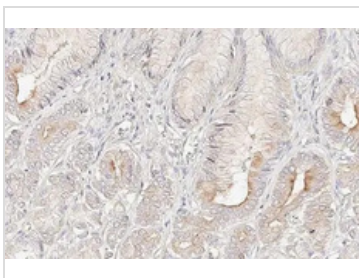
GTX636265 WB Image

Non-transfected (-) and transfected (+) 293T whole cell extracts (30 µg) were separated by 7.5% SDS-PAGE, and the membrane was blotted with ACE2 antibody [HL1092] (GTX636265) diluted at 1:5000. The HRP-conjugated anti-rabbit IgG antibody (GTX213110-01) was used to detect the primary antibody.



GTX636265 IHC-P Image

ACE2 antibody [HL1092] detects ACE2 protein at cell membrane by immunohistochemical analysis. Sample: Paraffin-embedded cat colon. ACE2 stained by ACE2 antibody [HL1092] (GTX636265) diluted at 1:100. Antigen Retrieval: Citrate buffer, pH 6.0, 15 min



GTX636265 IHC-P Image

ACE2 antibody [HL1092] detects ACE2 protein at cell membrane by immunohistochemical analysis. Sample: Paraffin-embedded dog stomach. ACE2 stained by ACE2 antibody [HL1092] (GTX636265) diluted at 1:100. Antigen Retrieval: Citrate buffer, pH 6.0, 15 min

Scan me for more info!



www.unibiotech.in



An ISO 9001:2015 Certified Company

Order now and enjoy our services anywhere in India!

Tel: +91 9910 73 8844 | Email: info@unibiotech.in

Reg. Address : A-33, 2nd Floor, Ring Road, Rajouri Garden, New Delhi-110027 (INDIA)

Date 2024 / 12 / 12 Page 2 of 2



For full product information, images and publications, please visit our [website](http://www.unibiotech.in).