

SOX2 antibody [HL1193]

Cat. No. GTX636505

Host	Rabbit
Clonality	Monoclonal
Isotype	IgG
Application	WB, ICC/IF, IHC-P, IP
Reactivity	Human, Mouse, Rat, Cat

★★★★★ Review (2)

Pack age
100 µl, 25 µl

APPLICATION

Application Note

*Optimal dilutions/concentrations should be determined by the researcher.

Suggested dilution	Recommended dilution
WB	1:500-1:3000
ICC/IF	Assay dependent
IHC-P	Assay dependent
IP	Assay dependent

Not tested in other applications.

Calculated MW 34 kDa. ([Note](#))

PROPERTIES

Form	Liquid
Buffer	PBS
Preservative	No preservative
Storage	Store as concentrated solution. Centrifuge briefly prior to opening vial. For short-term storage (1-2 weeks), store at 4°C. For long-term storage, aliquot and store at -20°C or below. Avoid multiple freeze-thaw cycles.
Concentration	1 mg/ml (Please refer to the vial label for the specific concentration.)
Immunogen	Recombinant fragment of human SOX2.
Purification	Affinity purified by Protein A.
Conjugation	Unconjugated

For laboratory research use only. Not for any clinical, therapeutic, or diagnostic use in humans or animals. Not for animal or human consumption.

Note Purchasers shall not, and agree not to enable third parties to, analyze, copy, reverse engineer or otherwise attempt to determine the structure or sequence of the product.

Scan me for more info!

For full product information, images and publications, please visit our [website](#).

www.unibiotech.in



An ISO 9001:2015 Certified Company

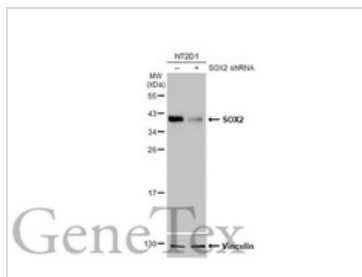
Order now and enjoy our services anywhere in India!

Tel: +91 9910 73 8844 | Email: info@unibiotech.in

Reg. Address : A-33, 2nd Floor, Ring Road, Rajouri Garden, New Delhi-110027 (INDIA)

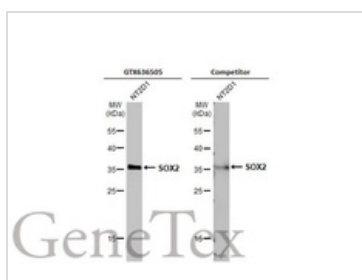
Date 2024 / 12 / 20 Page 1 of 2

DATA IMAGES



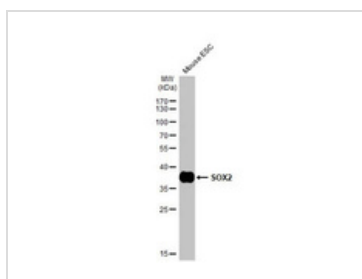
GTX636505 WB Image

Non-transfected (-) and transfected (+) NT2D1 whole cell extract (30 µg) were separated by 12% SDS-PAGE, and the membrane was blotted with SOX2 antibody [HL1193] (GTX636505) diluted at 1:1000. The HRP-conjugated anti-rabbit IgG antibody (GTX213110-01) was used to detect the primary antibody.



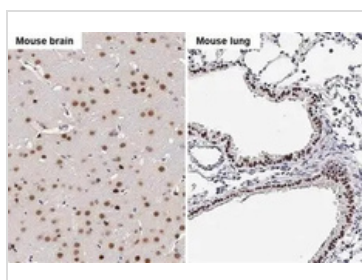
GTX636505 WB Image

Whole cell extract (30 µg) was separated by 12% SDS-PAGE, and the membranes were blotted with SOX2 antibody [HL1193] (GTX636505) diluted at 1:1000 and competitor's antibody (sc-17320) diluted at 1:1000. The HRP-conjugated anti-rabbit IgG antibody (GTX213110-01) was used to detect the primary antibody. *The competitor is not affiliated with GeneTex and does not endorse this product.



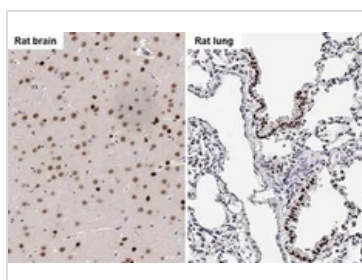
GTX636505 WB Image

Mouse ESC extract (50 µg) was separated by 12% SDS-PAGE, and the membrane was blotted with SOX2 antibody [HL1193] (GTX636505) diluted at 1:1000. The HRP-conjugated anti-rabbit IgG antibody (GTX213110-01) was used to detect the primary antibody.



GTX636505 IHC-P Image

SOX2 antibody detects SOX2 protein by immunohistochemical analysis.
Sample: Paraffin-embedded mouse tissues.
SOX2 stained by SOX2 antibody (GTX636505) diluted at 1:100.
Antigen Retrieval: Citrate buffer, pH 6.0, 15 min



GTX636505 IHC-P Image

SOX2 antibody detects SOX2 protein by immunohistochemical analysis.
Sample: Paraffin-embedded rat tissues.
SOX2 stained by SOX2 antibody (GTX636505) diluted at 1:100.
Antigen Retrieval: Citrate buffer, pH 6.0, 15 min

Scan me for more info!



For full product information, images and publications, please visit our [website](http://www.unibiotech.in).



www.unibiotech.in



An ISO 9001:2015 Certified Company

Order now and enjoy our services anywhere in India!

Tel: +91 9910 73 8844 | Email: info@unibiotech.in

Reg. Address : A-33, 2nd Floor, Ring Road, Rajouri Garden, New Delhi-110027 (INDIA)

Date 2024 / 12 / 20 Page 2 of 2