

# Chk1 (phospho Ser345) antibody [HL122]

**Cat. No. GTX635572**

<b>Host</b>	Rabbit
<b>Clonality</b>	Monoclonal
<b>Isotype</b>	IgG
<b>Application</b>	WB, ICC/IF
<b>Reactivity</b>	Human

**Package**  
100 µl, 25 µl

## APPLICATION

### Application Note

\*Optimal dilutions/concentrations should be determined by the researcher.

Suggested dilution	Recommended dilution
WB	1:500-1:3000
ICC/IF	Assay dependent

Not tested in other applications.

Calculated MW      54 kDa. ([Note](#))

## PROPERTIES

Form      Liquid

Buffer      PBS

Preservative      No preservative

Storage      Store as concentrated solution. Centrifuge briefly prior to opening vial. For short-term storage (1-2 weeks), store at 4°C. For long-term storage, aliquot and store at -20°C or below. Avoid multiple freeze-thaw cycles.

Concentration      1 mg/ml (Please refer to the vial label for the specific concentration.)

Immunogen      Carrier-protein conjugated synthetic peptide surrounding phospho Ser345 of human Chk1. The exact sequence is proprietary.

Purification      Affinity purified by Protein A.

Conjugation      Unconjugated

Note      For laboratory research use only. Not for any clinical, therapeutic, or diagnostic use in humans or animals. Not for animal or human consumption. Purchasers shall not, and agree not to enable third parties to, analyze, copy, reverse engineer or otherwise attempt to determine the structure or sequence of the product.

Scan me for more info!



For full product information, images and publications, please visit our [website](#).



[www.unibiotech.in](http://www.unibiotech.in)



An ISO 9001:2015 Certified Company

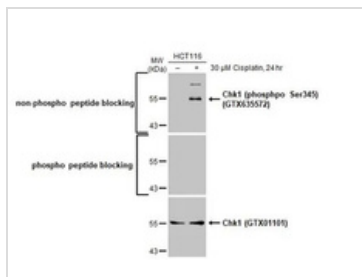
Order now and enjoy our services anywhere in India!

Tel: +91 9910 73 8844 | Email: [info@unibiotech.in](mailto:info@unibiotech.in)

Reg. Address : A-33, 2nd Floor, Ring Road, Rajouri Garden, New Delhi-110027 (INDIA)

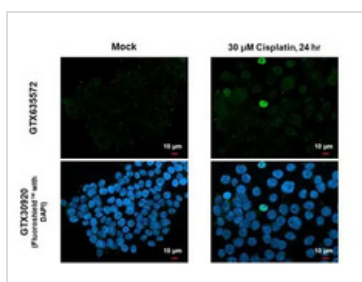
Date 2024 / 12 / 13 Page 1 of 2

DATA IMAGES



GTX635572 WB Image

Untreated (-) and treated (+) HCT116 whole cell extracts (30 µg) were separated by 10% SDS-PAGE, and the membrane was blotted with Chk1 (phospho Ser345) antibody [HL122] (GTX635572) diluted at 1:500. The HRP-conjugated anti-rabbit IgG antibody (GTX213110-01) was used to detect the primary antibody.



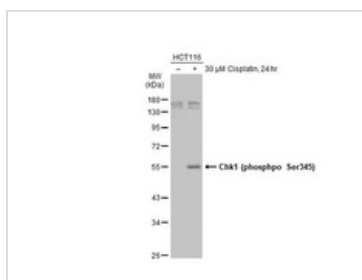
GTX635572 ICC/IF Image

Chk1 (phospho Ser345) antibody [HL122] detects Chk1 (phospho Ser345) protein at nucleus by immunofluorescent analysis.

Sample: Mock and treated HCT116 cells were fixed in 4% paraformaldehyde at RT for 15 min.

Green: Chk1 (phospho Ser345) stained by Chk1 (phospho Ser345) antibody [HL122] (GTX635572) diluted at 1:500.

Blue: Fluoroshield with DAPI (GTX30920).



GTX635572 WB Image

Untreated (-) and treated (+) HCT116 whole cell extracts (30 µg) were separated by 10% SDS-PAGE, and the membrane was blotted with Chk1 (phospho Ser345) antibody [HL122] (GTX635572) diluted at 1:500. The HRP-conjugated anti-rabbit IgG antibody (GTX213110-01) was used to detect the primary antibody.

Scan me for more info!



www.unibiotech.in



For full product information, images and publications, please visit our [website](http://www.unibiotech.in).



An ISO 9001:2015 Certified Company

Order now and enjoy our services anywhere in India!

Tel: +91 9910 73 8844 | Email: [info@unibiotech.in](mailto:info@unibiotech.in)

Reg. Address : A-33, 2nd Floor, Ring Road, Rajouri Garden, New Delhi-110027 (INDIA)

Date 2024 / 12 / 13 Page 2 of 2