

CXCR7 antibody [HL2189]

Cat. No. GTX638193

Host	Rabbit
Clonality	Monoclonal
Isotype	IgG
Application	WB, ICC/IF, IHC-P, IHC-Fr
Reactivity	Human, Mouse, Rat

Reference (1)

Package

100 µl, 25 µl

APPLICATION

Application Note

*Optimal dilutions/concentrations should be determined by the researcher.

Suggested dilution	Recommended dilution
WB	1:500-1:3000
ICC/IF	Assay dependent
IHC-P	Assay dependent
IHC-Fr	Assay dependent

Not tested in other applications.

Observed MW	53 kDa.
Product Note	This antibody was raised against human CXCR7 Intracellular domain.

PROPERTIES

Form	Liquid
Buffer	PBS
Preservative	No preservative
Storage	Store as concentrated solution. Centrifuge briefly prior to opening vial. For short-term storage (1-2 weeks), store at 4°C. For long-term storage, aliquot and store at -20°C or below. Avoid multiple freeze-thaw cycles.
Concentration	1 mg/ml (Please refer to the vial label for the specific concentration.)
Immunogen	Synthetic peptide encompassing a sequence within the Intracellular domain of human CXCR7. The exact sequence is proprietary.
Purification	Affinity purified by Protein A.
Conjugation	Unconjugated

Scan me for more info!

For full product information, images and publications, please visit our [website](#).

www.unibiotech.in



An ISO 9001:2015 Certified Company

Order now and enjoy our services anywhere in India!

Tel: +91 9910 73 8844 | Email: info@unibiotech.in

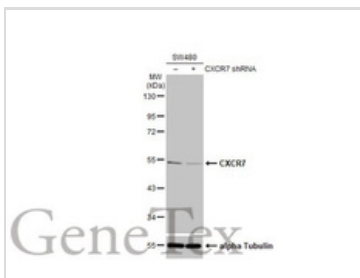
Reg. Address : A-33, 2nd Floor, Ring Road, Rajouri Garden, New Delhi-110027 (INDIA)

Date 2024 / 12 / 13 Page 1 of 2

Note

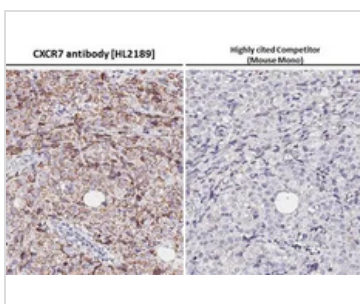
For laboratory research use only. Not for any clinical, therapeutic, or diagnostic use in humans or animals. Not for animal or human consumption. Purchasers shall not, and agree not to enable third parties to, analyze, copy, reverse engineer or otherwise attempt to determine the structure or sequence of the product.

DATA IMAGES



GTX638193 WB Image

Non-transfected (-) and transfected (+) SW480 whole cell extracts (30 µg) were separated by 10% SDS-PAGE, and the membrane was blotted with CXCR7 antibody [HL2189] (GTX638193) diluted at 1:10000. The HRP-conjugated anti-rabbit IgG antibody (GTX213110-01) was used to detect the primary antibody.



GTX638193 IHC-P Image

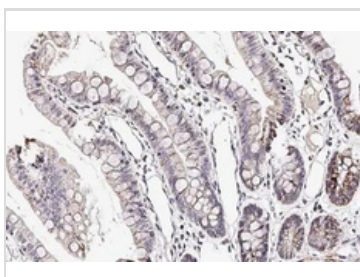
CXCR7 antibody [HL2189] detects CXCR7 protein at cell membrane by immunohistochemical analysis.

Sample: Paraffin-embedded Raji xenograft.

CXCR7 stained by CXCR7 antibody [HL2189] (GTX638193) diluted at 1:200 and competitor's antibody (MAB42273) diluted at 1:200.

Antigen Retrieval: Citrate buffer, pH 6.0, 15 min

*Competitor's antibody is not affiliated with GeneTex and does not endorse this product.



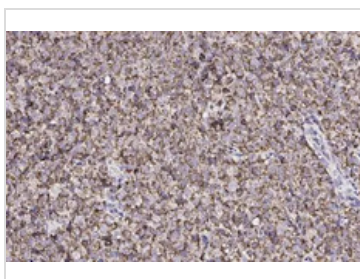
GTX638193 IHC-P Image

CXCR7 antibody [HL2189] detects CXCR7 protein at cell membrane by immunohistochemical analysis.

Sample: Paraffin-embedded human colon cancer.

CXCR7 stained by CXCR7 antibody [HL2189] (GTX638193) diluted at 1:100.

Antigen Retrieval: Citrate buffer, pH 6.0, 15 min



GTX638193 IHC-P Image

CXCR7 antibody [HL2189] detects CXCR7 protein at cell membrane by immunohistochemical analysis.

Sample: Paraffin-embedded Raji xenograft.

CXCR7 stained by CXCR7 antibody [HL2189] (GTX638193) diluted at 1:100.

Antigen Retrieval: Citrate buffer, pH 6.0, 15 min

Scan me for more info!



www.unibiotech.in



For full product information, images and publications, please visit our [website](http://www.unibiotech.in).



An ISO 9001:2015 Certified Company

Order now and enjoy our services anywhere in India!

Tel: +91 9910 73 8844 | Email: info@unibiotech.in

Reg. Address : A-33, 2nd Floor, Ring Road, Rajouri Garden, New Delhi-110027 (INDIA)

Date 2024 / 12 / 13 Page 2 of 2