

## Insulin antibody [HMV308] HistoMAX™

Cat. No. GTX639932

Host	Rabbit
Clonality	Monoclonal
Isotype	IgG
Application	IHC-P
Reactivity	Human

Package  
500 µl, 100 µl

## PRODUCT

## Summary

[Go to Normal Tissue Gallery](#)
[Go to Cancer Tissue Gallery](#)

## APPLICATION

## Application Note

\*Optimal dilutions/concentrations should be determined by the researcher.

Suggested dilution	Recommended dilution
IHC-P	1:100-1:200

Note : Heat-induced antigen retrieval for 5 minutes in an autoclave at 121°C in pH 7.8 Target Retrieval Solution buffer.

Not tested in other applications.

## PROPERTIES

Form	Liquid
Buffer	PBS, 2% BSA
Preservative	0.025% ProClin 300
Storage	Store as concentrated solution. Centrifuge briefly prior to opening vial. For short-term storage (1-2 weeks), store at 4°C. For long-term storage, aliquot and store at -20°C or below. Avoid multiple freeze-thaw cycles.
Concentration	8 µg/ml (Please refer to the vial label for the specific concentration.)
Immunogen	Carrier-protein conjugated synthetic peptide encompassing a sequence within the N-terminus region of human insulin. The exact sequence is proprietary.
Purification	Affinity purified by Protein A.
Conjugation	Unconjugated

Scan me for more info!



For full product information, images and publications, please visit our [website](#).



[www.unibiotech.in](http://www.unibiotech.in)



An ISO 9001:2015 Certified Company

Order now and enjoy our services anywhere in India!

Tel: +91 9910 73 8844 | Email: [info@unibiotech.in](mailto:info@unibiotech.in)

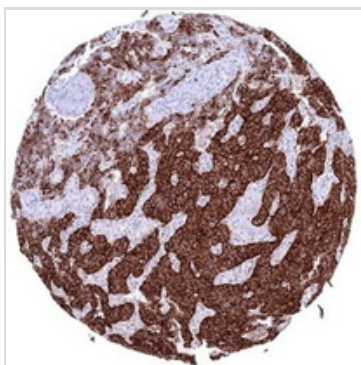
Reg. Address : A-33, 2nd Floor, Ring Road, Rajouri Garden, New Delhi-110027 (INDIA)

Date 2024 / 12 / 16 Page 1 of 2

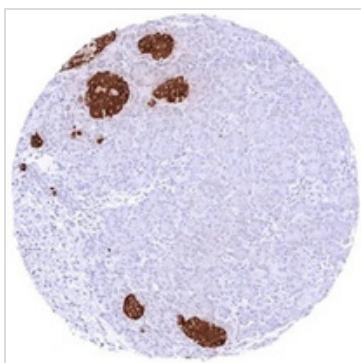
Note

For laboratory research use only. Not for any clinical, therapeutic, or diagnostic use in humans or animals. Not for animal or human consumption. Purchasers shall not, and agree not to enable third parties to, analyze, copy, reverse engineer or otherwise attempt to determine the structure or sequence of the product.

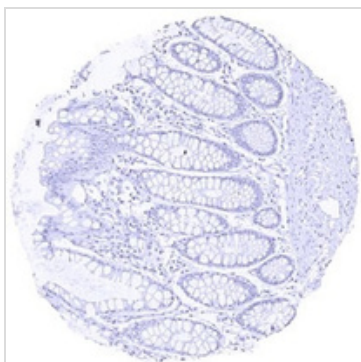
DATA IMAGES



GTX639932 IHC-P Image  
IHC-P analysis of human pancreatic neuroendocrine tumor (PNET, insulinoma) tissue using GTX639932 Insulin antibody [HMV308] HistoMAX™.  
Strong Insulin positivity of most tumor cells.



GTX639932 IHC-P Image  
IHC-P analysis of human pancreas tissue using GTX639932 Insulin antibody [HMV308] HistoMAX™.  
Pancreas with a strong cytoplasmic insulin staining of the majority of islet cells.



GTX639932 IHC-P Image  
IHC-P analysis of human colon tissue using GTX639932 Insulin antibody [HMV308] HistoMAX™.  
Colon sample completely lacking insulin staining.

Scan me for more info!



For full product information, images and publications, please visit our [website](http://www.unibiotex.in).



[www.unibiotex.in](http://www.unibiotex.in)



An ISO 9001:2015 Certified Company

Order now and enjoy our services anywhere in India!

Tel: +91 9910 73 8844 | Email: [info@unibiotex.in](mailto:info@unibiotex.in)

Reg. Address : A-33, 2nd Floor, Ring Road, Rajouri Garden, New Delhi-110027 (INDIA)

Date 2024 / 12 / 16 Page 2 of 2