

XPR1 antibody [HL2632]

Cat. No. GTX639088

Host	Rabbit
Clonality	Monoclonal
Isotype	IgG
Application	WB, ICC/IF, IHC-P
Reactivity	Human, Mouse, Rat

Package
100 µl, 25 µl

APPLICATION

Application Note

*Optimal dilutions/concentrations should be determined by the researcher.

Suggested dilution	Recommended dilution
WB	1:500-1:3000
ICC/IF	Assay dependent
IHC-P	Assay dependent

Not tested in other applications.

Observed MW 60-68 (smear), 72 kDa.

Product Note This antibody was raised against human XPR1 Intracellular domain, and it does not cross react with human LDHB, LDHC, LDHAL6A, and LDHAL6B protein.

PROPERTIES

Form	Liquid
Buffer	PBS
Preservative	No preservative
Storage	Store as concentrated solution. Centrifuge briefly prior to opening vial. For short-term storage (1-2 weeks), store at 4°C. For long-term storage, aliquot and store at -20°C or below. Avoid multiple freeze-thaw cycles.
Concentration	1 mg/ml (Please refer to the vial label for the specific concentration.)
Immunogen	Recombinant protein encompassing a sequence within the Intracellular domain of human XPR1. The exact sequence is proprietary.
Purification	Affinity purified by Protein A.
Conjugation	Unconjugated

Scan me for more info!



For full product information, images and publications, please visit our [website](#).



www.unibiotech.in



An ISO 9001:2015 Certified Company

Order now and enjoy our services anywhere in India!

Tel: +91 9910 73 8844 | Email: info@unibiotech.in

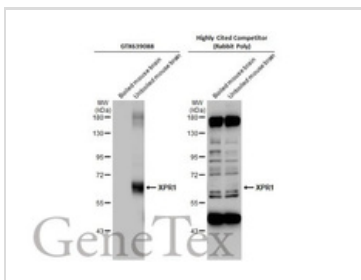
Reg. Address : A-33, 2nd Floor, Ring Road, Rajouri Garden, New Delhi-110027 (INDIA)

Date 2024 / 12 / 18 Page 1 of 2

Note

For laboratory research use only. Not for any clinical, therapeutic, or diagnostic use in humans or animals. Not for animal or human consumption. Purchasers shall not, and agree not to enable third parties to, analyze, copy, reverse engineer or otherwise attempt to determine the structure or sequence of the product.

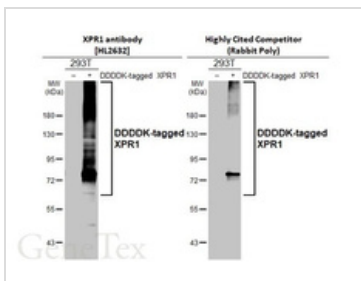
DATA IMAGES



GTX639088 WB Image

Boiled and unboiled mouse tissue extract (50 µg) were separated by 7.5% SDS-PAGE, and the membranes were blotted with XPR1 antibody [HL2632] (GTX639088) diluted at 1:1000 and the highly cited competitor's diluted at 1:1000. The HRP-conjugated anti-rabbit IgG antibody (GTX213110-01) was used to detect the primary antibody.

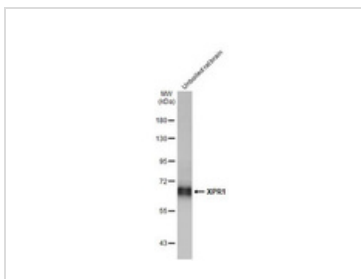
*The competitor is not affiliated with GeneTex and does not endorse this product.



GTX639088 WB Image

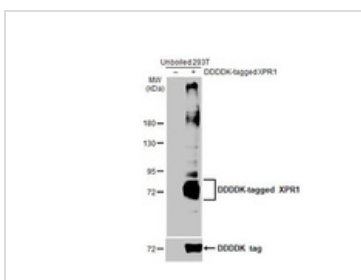
Non-transfected (-) and transfected (+) 293T whole cell extracts (30 µg) were separated by 7.5% SDS-PAGE, and the membranes were blotted with XPR1 antibody [HL2632] (GTX639088) diluted at 1:1000 and competitor's antibody (Highly Cited Antibody) diluted at 1:1000. The HRP-conjugated anti-rabbit IgG antibody (GTX213110-01) was used to detect the primary antibody.

*The competitor is not affiliated with GeneTex and does not endorse this product.



GTX639088 WB Image

Unboiled rat tissue extract (50 µg) was separated by 7.5% SDS-PAGE, and the membrane was blotted with XPR1 antibody [HL2632] (GTX639088) diluted at 1:1000. The HRP-conjugated anti-rabbit IgG antibody (GTX213110-01) was used to detect the primary antibody, and the signal was developed with Trident ECL plus-Enhanced.



GTX639088 WB Image

Non-transfected (-) and transfected (+) unboiled 293T whole cell extracts (30 µg) were separated by 7.5% SDS-PAGE, and the membrane was blotted with XPR1 antibody [HL2632] (GTX639088) diluted at 1:1000. The HRP-conjugated anti-rabbit IgG antibody (GTX213110-01) was used to detect the primary antibody.

Scan me for more info!



www.unibiotech.in



Order now and enjoy our services anywhere in India!

Tel: +91 9910 73 8844 | Email: info@unibiotech.in

Reg. Address : A-33, 2nd Floor, Ring Road, Rajouri Garden, New Delhi-110027 (INDIA)

Date 2024 / 12 / 18 Page 2 of 2



For full product information, images and publications, please visit our [website](https://www.unibiotech.in).