

GFP antibody [GT859]

Cat. No. GTX628528

Host	Mouse
Clonality	Monoclonal
Isotype	IgG2b
Application	WB, ICC/IF, IHC-P, IHC-Fr, IHC-Wm, IP, ELISA, Sandwich ELISA
Reactivity	Species independent

Reference (31)
 Package
 100 µl, 25 µl

APPLICATION

Application Note

*Optimal dilutions/concentrations should be determined by the researcher.

Suggested dilution	Recommended dilution
WB	1:1000-1:10000
ICC/IF	1:100-1:2000
IHC-P	Assay dependent
IHC-Fr	Assay dependent
IHC-Wm	Assay dependent
IP	1:100-1:500
ELISA	1:1000-1:10000
Sandwich ELISA	Assay dependent

Note : Capture: GTX628528 , Detection: GTX113617

Not tested in other applications.

Product Note This antibody reacts with GFP variants including GFP, EGFP, and YFP.

PROPERTIES

Form	Liquid
Buffer	PBS
Preservative	No preservative
Storage	Store as concentrated solution. Centrifuge briefly prior to opening vial. For short-term storage (1-2 weeks), store at 4°C. For long-term storage, aliquot and store at -20°C or below. Avoid multiple freeze-thaw cycles.
Concentration	0.25 mg/ml (Please refer to the vial label for the specific concentration.)
Immunogen	Full length GFP recombinant protein

Scan me for more info!



For full product information, images and publications, please visit our [website](#).



www.unibiotech.in



An ISO 9001:2015 Certified Company

Order now and enjoy our services anywhere in India!

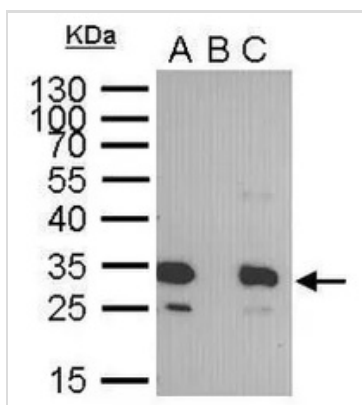
Tel: +91 9910 73 8844 | Email: info@unibiotech.in

Reg. Address : A-33, 2nd Floor, Ring Road, Rajouri Garden, New Delhi-110027 (INDIA)

Date 2024 / 12 / 15 Page 1 of 2

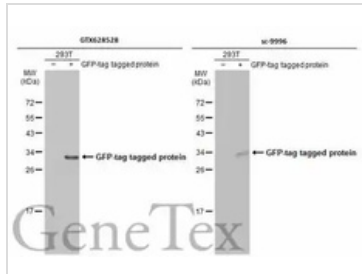
Purification	Affinity purified by Protein A. From tissue culture supernatant
Conjugation	Unconjugated
Note	For laboratory research use only. Not for any clinical, therapeutic, or diagnostic use in humans or animals. Not for animal or human consumption. Purchasers shall not, and agree not to enable third parties to, analyze, copy, reverse engineer or otherwise attempt to determine the structure or sequence of the product.

DATA IMAGES



GTX628528 IP Image

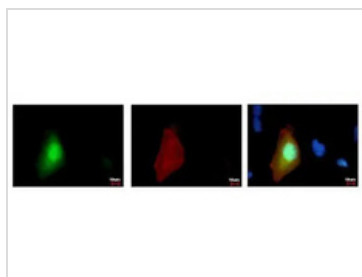
GFP tag antibody immunoprecipitates GFP-fused protein in IP experiments. IP Sample: 400 µg cell lysate/extract of GFP-fused gene transfected 293T cells A. 30 µg lysate/extract of transfected 293T cell B. Control with 2 µg of preimmune mouse IgG C. Immunoprecipitation of GFP-fused protein by 2 µg of GFP tag antibody (GTX628528) 12% SDS-PAGE The immunoprecipitated GFP-fused protein was detected by GFP tag antibody (GTX628528) diluted at 1:1000. EasyBlot anti-mouse IgG (GTX221667-01) was used as a secondary reagent.



GTX628528 WB Image

Non-transfected (-) and transfected (+) 293T whole cell extracts (5 µg) were separated by 12% SDS-PAGE, and the membranes were blotted with GFP antibody [GT859] (GTX628528) diluted at 1:5000 and competitor's antibody (sc-9996) diluted at 1:5000. The HRP-conjugated anti-mouse IgG antibody (GTX213111-01) was used to detect the primary antibody.

*The competitor is not affiliated with GeneTex and does not endorse this product.



GTX628528 ICC/IF Image

GFP-tag antibody detects GFP-recombinant protein by immunofluorescent analysis. Sample: GFP-tag transfected HeLa cells were fixed in 4% paraformaldehyde at RT for 15 min. Green: GFP is expressed in the transfected cell Red: .GFP-recombinant protein stained by GFP-tag antibody (GTX628528) diluted at 1:2000. Blue: Hoechst 33342 staining.

Scan me for more info!



For full product information, images and publications, please visit our [website](http://www.unibiotech.in).



www.unibiotech.in



An ISO 9001:2015 Certified Company

Order now and enjoy our services anywhere in India!

Tel: +91 9910 73 8844 | Email: info@unibiotech.in

Reg. Address : A-33, 2nd Floor, Ring Road, Rajouri Garden, New Delhi-110027 (INDIA)

Date 2024 / 12 / 15 Page 2 of 2