

AKT antibody [N3C2], Internal

Cat. No. GTX121937

Host	Rabbit
Clonality	Polyclonal
Isotype	IgG
Application	WB, ICC/IF, IHC-P, IHC-Fr, IP
Reactivity	Human, Mouse, Rat, Pig, Japanese Medaka

Reference (100)

★★★★★ Review (8)

Pack age

100 µl, 25 µl

PRODUCT

Summary AKT antibody recognizes AKT, a serine/threonine-specific protein kinase with a predicted molecular weight of ~57 kDa. AKT is a family of three highly homologous isoforms that have more than a hundred substrates, with most of these regulated by all three proteins. Responding to many extracellular stimuli, AKT is active through major signaling nodes that include GSK3, FOXO, and TSC2/mTORC1.

APPLICATION

Application Note

*Optimal dilutions/concentrations should be determined by the researcher.

Suggested dilution	Recommended dilution
WB	1:500-1:3000
ICC/IF	1:100-1:1000
IHC-P	Assay dependent
IHC-Fr	Assay dependent
IP	1:100-1:500

Not tested in other applications.

Calculated MW 56 kDa. ([Note](#))

Product Note IP/MS validation was supported by references (PMID:30377414)

PROPERTIES

Form	Liquid
Buffer	PBS, 20% Glycerol
Preservative	0.025% ProClin 300
Storage	Store as concentrated solution. Centrifuge briefly prior to opening vial. For short-term storage (1-2 weeks), store at 4°C. For long-term storage, aliquot and store at -20°C or below. Avoid multiple freeze-thaw cycles.
Concentration	0.67 mg/ml (Please refer to the vial label for the specific concentration.)

Scan me for more info!



For full product information, images and publications, please visit our [website](#).



www.unibiotech.in



An ISO 9001:2015 Certified Company

Order now and enjoy our services anywhere in India!

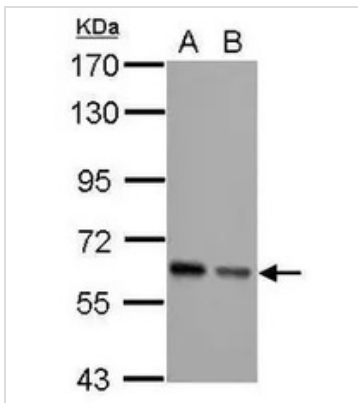
Tel: +91 9910 73 8844 | Email: info@unibiotech.in

Reg. Address : A-33, 2nd Floor, Ring Road, Rajouri Garden, New Delhi-110027 (INDIA)

Date 2024 / 12 / 13 Page 1 of 2

Immunogen	Recombinant protein encompassing a sequence within the center region of human Akt1/2/3. The exact sequence is proprietary.
Purification	Purified by antigen-affinity chromatography.
Conjugation	Unconjugated
Note	For laboratory research use only. Not for any clinical, therapeutic, or diagnostic use in humans or animals. Not for animal or human consumption. Purchasers shall not, and agree not to enable third parties to, analyze, copy, reverse engineer or otherwise attempt to determine the structure or sequence of the product.

DATA IMAGES



GTX121937 WB Image

Sample (30 µg of whole cell lysate)

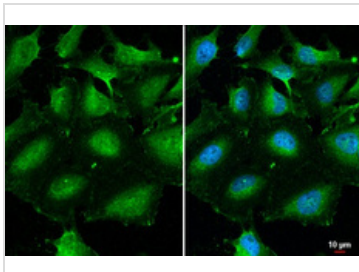
A: JC

B: BCL-1

7.5% SDS PAGE

GTX121937 diluted at 1:5000

The HRP-conjugated anti-rabbit IgG antibody (GTX213110-01) was used to detect the primary antibody.



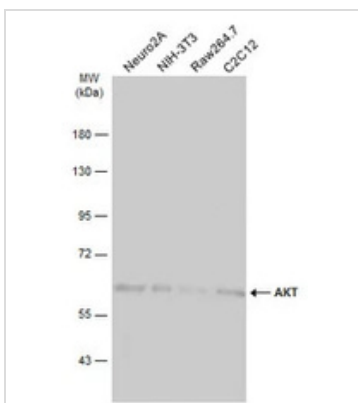
GTX121937 ICC/IF Image

AKT antibody [N3C2], Internal detects AKT protein at cytoplasm and nucleus by immunofluorescent analysis.

Sample: HeLa cells were fixed in 4% paraformaldehyde at RT for 15 min.

Green: AKT stained by AKT antibody [N3C2], Internal (GTX121937) diluted at 1:500.

Blue: Fluoroshield with DAPI (GTX30920).



GTX121937 WB Image

Various whole cell extracts (30 µg) were separated by 7.5% SDS-PAGE, and the membrane was blotted with AKT antibody [N3C2], Internal (GTX121937) diluted at 1:1000. The HRP-conjugated anti-rabbit IgG antibody (GTX213110-01) was used to detect the primary antibody, and the signal was developed with Trident ECL plus-Enhanced.

Scan me for more info!



www.unibiotech.in



Order now and enjoy our services anywhere in India!

Tel: +91 9910 73 8844 | Email: info@unibiotech.in

Reg. Address : A-33, 2nd Floor, Ring Road, Rajouri Garden, New Delhi-110027 (INDIA)

Date 2024 / 12 / 13 Page 2 of 2



For full product information, images and publications, please visit our [website](http://www.unibiotech.in).