

Beta Actin antibody

Cat. No. GTX109639

Host	Rabbit
Clonality	Polyclonal
Isotype	IgG
Application	WB, ICC/IF, IHC-P, IHC-Fr, IP
Reactivity	Human, Mouse, Rat, Yeast, Sheep, Drosophila, Cat, Dog, Hamster, Chicken, Pig, Monkey, Caenorhabditis elegans, Candida albicans, E. coli, Horse, Mosquito, Rice, Xenopus, Treeshrew, Plant, Worm

Reference (642)

★★★★★ Review (13)

Pack age

100 µl, 25 µl

PRODUCT

Summary beta-Actin antibody detects beta-actin, a cytoskeletal protein with a predicted molecular weight of 42 kDa. Because of its widespread expression, beta-actin is commonly used as a loading control for various protein assays, particularly western blots, to estimate sample protein amount and quality.

APPLICATION

Application Note

*Optimal dilutions/concentrations should be determined by the researcher.

Suggested dilution	Recommended dilution
WB	1:500-1:20000
ICC/IF	1:100-1:1000
IHC-P	1:100-1:1000
IHC-Fr	Assay dependent
IP	Assay dependent

Not tested in other applications.

Calculated MW 42 kDa. ([Note](#))

Product Note IP/MS validation was supported by references (PMID:30377395)

PROPERTIES

Form	Liquid
Buffer	PBS, 20% Glycerol
Preservative	0.025% ProClin 300
Storage	Store as concentrated solution. Centrifuge briefly prior to opening vial. For short-term storage (1-2 weeks), store at 4°C. For long-term storage, aliquot and store at -20°C or below. Avoid multiple freeze-thaw cycles.
Concentration	1.48 mg/ml (Please refer to the vial label for the specific concentration.)

Scan me for more info!



www.unibiotech.in



An ISO 9001:2015 Certified Company

Order now and enjoy our services anywhere in India!

Tel: +91 9910 73 8844 | Email: info@unibiotech.in

Reg. Address : A-33, 2nd Floor, Ring Road, Rajouri Garden, New Delhi-110027 (INDIA)

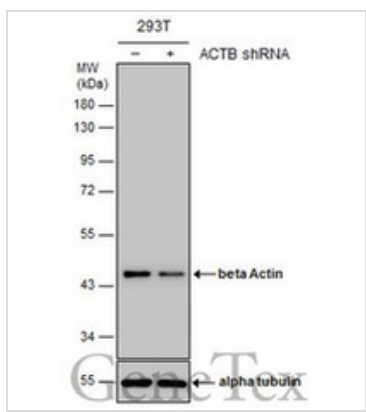
Date 2024 / 12 / 13 Page 1 of 2



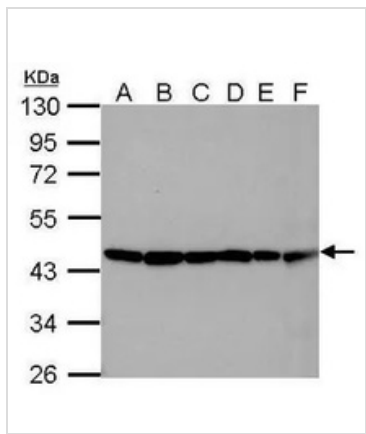
For full product information, images and publications, please visit our [website](#).

Immunogen	Carrier-protein conjugated synthetic peptide encompassing a sequence within the C-terminus region of human beta Actin. The exact sequence is proprietary.
Purification	Purified by antigen-affinity chromatography.
Conjugation	Unconjugated
Note	For laboratory research use only. Not for any clinical, therapeutic, or diagnostic use in humans or animals. Not for animal or human consumption. Purchasers shall not, and agree not to enable third parties to, analyze, copy, reverse engineer or otherwise attempt to determine the structure or sequence of the product.

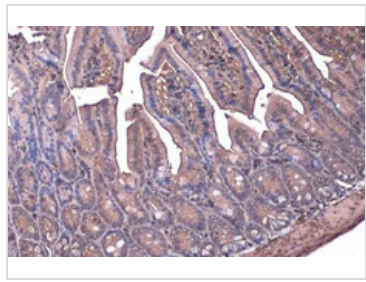
DATA IMAGES



GTX109639 WB Image
Non-transfected (-) and transfected (+) 293T whole cell extracts (10 µg) were separated by 10% SDS-PAGE, and the membrane was blotted with beta Actin antibody (GTX109639) diluted at 1:15000. The HRP-conjugated anti-rabbit IgG antibody (GTX213110-01) was used to detect the primary antibody.



GTX109639 WB Image
Sample (30 µg of whole cell lysate)
A: 293T
B: NTH-3T3
C: mouse brain
D: PC-12
E: Rat brain
F: drosophila
10% SDS PAGE
GTX109639 diluted at 1:10000
The HRP-conjugated anti-rabbit IgG antibody (GTX213110-01) was used to detect the primary antibody.



GTX109639 IHC-P Image
beta Actin antibody detects beta Actin protein at cell membrane and cytoplasm by immunohistochemical analysis.
Sample: Paraffin-embedded mouse intestine.
beta Actin stained by beta Actin antibody (GTX109639) diluted at 1:500.
Antigen Retrieval: Citrate buffer, pH 6.0, 15 min

Scan me for more info!



For full product information, images and publications, please visit our [website](http://www.genetex.com).



www.unibiotech.in



Order now and enjoy our services anywhere in India!

Tel: +91 9910 73 8844 | Email: info@unibiotech.in

Reg. Address : A-33, 2nd Floor, Ring Road, Rajouri Garden, New Delhi-110027 (INDIA)

Date 2024 / 12 / 13 Page 2 of 2