

RAS (G12D Mutant) antibody [HL2640]

Cat. No. GTX639096

Host	Rabbit
Clonality	Monoclonal
Isotype	IgG
Application	WB, ICC/IF
Reactivity	Human

Package
100 µl, 25 µl

APPLICATION

Application Note

*Optimal dilutions/concentrations should be determined by the researcher.

Suggested dilution	Recommended dilution
WB	1:500-1:3000
ICC/IF	Assay dependent

Not tested in other applications.

Observed MW 22 kDa.

PROPERTIES

Form	Liquid
Buffer	PBS
Preservative	No preservative
Storage	Store as concentrated solution. Centrifuge briefly prior to opening vial. For short-term storage (1-2 weeks), store at 4°C. For long-term storage, aliquot and store at -20°C or below. Avoid multiple freeze-thaw cycles.
Concentration	1 mg/ml (Please refer to the vial label for the specific concentration.)
Immunogen	Synthetic peptide of human RAS (G12D Mutant)
Purification	Affinity purified by Protein A.
Conjugation	Unconjugated

Note For laboratory research use only. Not for any clinical, therapeutic, or diagnostic use in humans or animals. Not for animal or human consumption.

Purchasers shall not, and agree not to enable third parties to, analyze, copy, reverse engineer or otherwise attempt to determine the structure or sequence of the product.

Scan me for more info!



For full product information, images and publications, please visit our [website](https://www.unibiotech.in).



www.unibiotech.in



An ISO 9001:2015 Certified Company

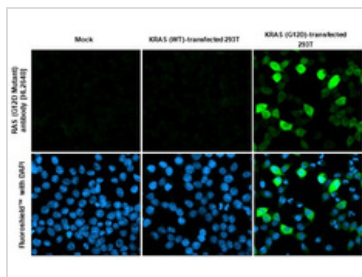
Order now and enjoy our services anywhere in India!

Tel: +91 9910 73 8844 | Email: info@unibiotech.in

Reg. Address : A-33, 2nd Floor, Ring Road, Rajouri Garden, New Delhi-110027 (INDIA)

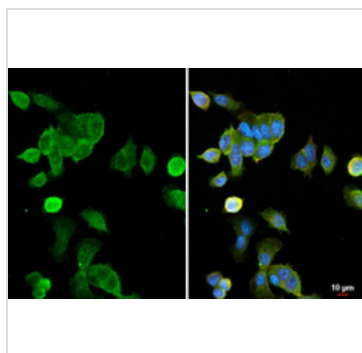
Date 2024 / 12 / 18 Page 1 of 2

DATA IMAGES



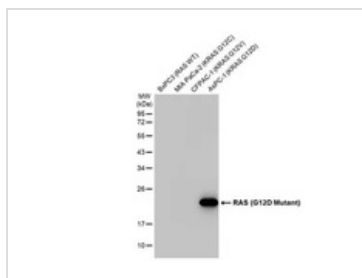
GTX639096 ICC/IF Image

RAS (G12D Mutant) antibody [HL2640] detects RAS (G12D Mutant) protein by immunofluorescent analysis. Sample: Mock and transfected 293T cells were fixed in ice-cold MeOH for 5 min. Green: RAS (G12D Mutant) stained by RAS (G12D Mutant) antibody [HL2640] (GTX639096) diluted at 1:500. Blue: Fluoroshield with DAPI (GTX30920).



GTX639096 ICC/IF Image

RAS (G12D Mutant) antibody [HL2640] detects RAS (G12D Mutant) protein at cytoplasm by immunofluorescent analysis. Sample: Aspc-1 cells were fixed in 4% paraformaldehyde at RT for 15 min. Green: RAS (G12D Mutant) stained by RAS (G12D Mutant) antibody [HL2640] (GTX639096) diluted at 1:500. Red: alpha Tubulin, a cytoskeleton marker, stained by alpha Tubulin antibody [GT114] (GTX628802) diluted at 1:1000. Blue: Fluoroshield with DAPI (GTX30920).



GTX639096 WB Image

Various whole cell extracts (30 µg) were separated by 12% SDS-PAGE, and the membrane was blotted with RAS (G12D Mutant) antibody [HL2640] (GTX639096) diluted at 1:1000. The HRP-conjugated anti-rabbit IgG antibody (GTX213110-01) was used to detect the primary antibody.

Scan me for more info!



www.unibiotech.in



For full product information, images and publications, please visit our [website](http://www.unibiotech.in).



An ISO 9001:2015 Certified Company

Order now and enjoy our services anywhere in India!

Tel: +91 9910 73 8844 | Email: info@unibiotech.in

Reg. Address : A-33, 2nd Floor, Ring Road, Rajouri Garden, New Delhi-110027 (INDIA)

Date 2024 / 12 / 18 Page 2 of 2