

## SARS-CoV / SARS-CoV-2 (COVID-19) spike antibody [1A9]

**Cat No. GTX632604**

<b>Host</b>	Mouse
<b>Clonality</b>	Monoclonal
<b>Isotype</b>	IgG1
<b>Application</b>	WB, ICC/IF, IHC-P, FACS, IP, ELISA, EM, Sandwich ELISA, IHC-P (cell pellet)
<b>Reactivity</b>	SARS Coronavirus, SARS Coronavirus 2

Reference ( 150 )

★★★★★ Review ( 10 )

Package

100 µl, 25 µl

## APPLICATION

**Application Note**

\*Optimal dilutions/concentrations should be determined by the researcher.

Suggested dilution	Dilution
WB	1:500-1:3000
ICC/IF	1:100-1:2000
IHC-P	1:100-1:500
FACS	Assay dependent
IP	Assay dependent
ELISA	Assay dependent
EM	Assay dependent
Sandwich ELISA	Assay dependent
IHC-P (cell pellet)	Assay dependent

**Note : Recommended heat-Induced Epitope Retrieval pH 6.0 for 20 minutes.****Capture : GTX632604, Detection: GTX635654 / GTX135356 / GTX635672 / GTX135386 / GTX135360 / GTX635910 / GTX635911 / GTX635693 / GTX635792 / GTX635793 / GTX635713.****Recommend using GTX400033 (Trident RIPA Lysis Buffer with low SDS) as dilution buffer for diluting samples and antibodies in sandwich ELISA assay if including GTX632604 as capture antibody.**

Not tested in other applications.

**Product Note**

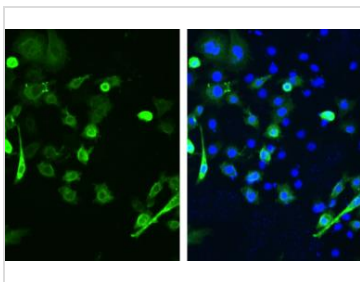
This antibody detects both SARS-CoV spike and SARS-CoV-2 spike proteins (S2 subunit). Our internal testing indicates no cross-reactivity with MERS-CoV spike protein.

## PROPERTIES

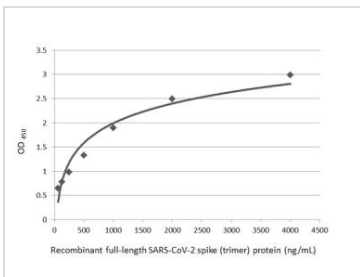
<b>Form</b>	Liquid
<b>Buffer</b>	PBS
<b>Preservative</b>	No Preservative

For full product information, images and publications, please visit our [website](#).

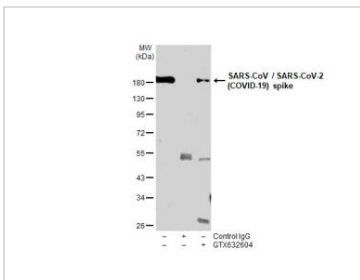
<b>Storage</b>	Store as concentrated solution. Centrifuge briefly prior to opening vial. For short-term storage (1-2 weeks), store at 4°C. For long-term storage, aliquot and store at -20°C or below. Avoid multiple freeze-thaw cycles.
<b>Concentration</b>	1 mg/ml (Please refer to the vial label for the specific concentration.)
<b>Immunogen</b>	The immunogen used to generate this antibody corresponds to SARS-CoV SΔ10 (within S2 domain) protein (1029-1192 a.a.). (SARS-CoV strain: Sin2774) The exact sequence is proprietary.
<b>Purification</b>	Affinity purified by Protein G.
<b>Conjugation</b>	Unconjugated
<b>Note</b>	For laboratory use only. Not for any clinical, therapeutic, or diagnostic use in humans or animals. Not for animal or human consumption.

**DATA IMAGES**

**GTX632604 ICC/IF Image**

SARS-CoV / SARS-CoV-2 (COVID-19) spike antibody [1A9] detects SARS-CoV-2 (COVID-19) spike protein by immunofluorescent analysis.  
 Sample: BHK-21 cells transfected with full-length SARS-CoV-2 spike were fixed in 4% paraformaldehyde at RT for 30 min.  
 Green: SARS-CoV-2 (COVID-19) spike stained by SARS-CoV / SARS-CoV-2 (COVID-19) spike antibody [1A9] (GTX632604) diluted at 1:2000.


**GTX632604 ELISA Image**

Sandwich ELISA detection of recombinant full-length SARS-CoV-2 spike (trimer) protein using GTX632604 as capture antibody at concentration of 5 µg/mL and GTX635672 as detection antibody at concentration of 1 µg/mL. Rabbit IgG antibody (HRP) (GTX213110-01) was diluted at 1:10000 and used to detect the primary antibody.


**GTX632604 IP Image**

Immunoprecipitation of SARS-CoV-2 Spike transfected 293T whole cell extracts using 2 µg of SARS-CoV / SARS-CoV-2 (COVID-19) spike antibody [1A9] (GTX632604).  
 Western blot analysis was performed using SARS-CoV / SARS-CoV-2 (COVID-19) spike antibody [1A9] (GTX632604).  
 EasyBlot HRP-conjugated anti mouse IgG antibody (GTX221667-01) was used to detect the primary antibody.



For full product information, images and publications, please visit our [website](#).