

TET3 antibody [C3], C-term

Cat. No. GTX121453

Host	Rabbit
Clonality	Polyclonal
Isotype	IgG
Application	WB, ICC/IF, IHC-P, IHC-Wm, IP, ChIP assay
Reactivity	Human, Mouse, Bovine, Xenopus laevis

Reference (29)

★★★★★ Review (2)

Package

100 µl, 25 µl

PRODUCT

Summary

TET3 antibody recognizes TET3 protein (predicted molecular weight of 194 kDa), a dioxygenase involved in active DNA demethylation that converts 5-methylcytosine (5mC) to 5-hydroxymethylcytosine (5hmC) and subsequently to 5-formylcytosine (5fC) and 5-carboxylcytosine (5caC). Like TET1 and TET2, TET3 appears to impact epigenetic regulation of gene expression. It is also involved in early embryogenesis, neuronal function, and other processes.

APPLICATION

Application Note

*Optimal dilutions/concentrations should be determined by the researcher.

Suggested dilution	Recommended dilution
WB	1:1000-1:10000
ICC/IF	1:100-1:1000
IHC-P	1:100-1:1000
IHC-Wm	Assay dependent
IP	1:500-1:1000
ChIP assay	Assay dependent

Not tested in other applications.

Calculated MW 179 kDa. ([Note](#))

PROPERTIES

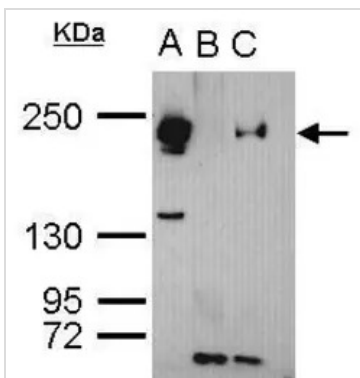
Form	Liquid
Buffer	1XPBS pH7, 1% BSA, 20% Glycerol
Preservative	0.025% ProClin 300
Storage	Store as concentrated solution. Centrifuge briefly prior to opening vial. For short-term storage (1-2 weeks), store at 4°C. For long-term storage, aliquot and store at -20°C or below. Avoid multiple freeze-thaw cycles.
Concentration	0.14 mg/ml (Please refer to the vial label for the specific concentration.)



For full product information, images and publications, please visit our [website](#).

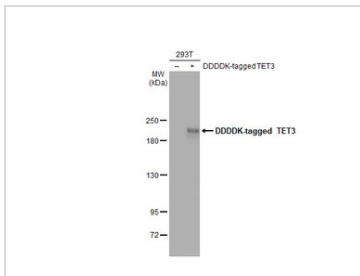
Immunogen	Recombinant protein encompassing a sequence within the C-terminus region of human TET3. The exact sequence is proprietary.
Purification	Purified by antigen-affinity chromatography.
Conjugation	Unconjugated
Note	For laboratory research use only. Not for any clinical, therapeutic, or diagnostic use in humans or animals. Not for animal or human consumption. Purchasers shall not, and agree not to enable third parties to, analyze, copy, reverse engineer or otherwise attempt to determine the structure or sequence of the product.

DATA IMAGES



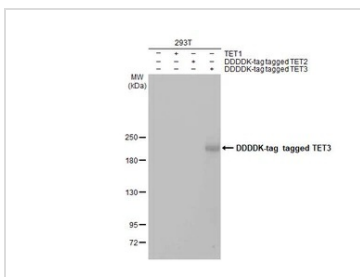
GTX121453 IP Image

TET3 antibody immunoprecipitates TET3 protein in IP experiments. IP Sample: cell lysate/extract of TET3 gene transfected 293T cells A. Cell lysate/extract of transfected 293T cell B. Control with 2 µg of preimmune rabbit IgG C. Immunoprecipitation of TET3 by 2 µg of TET3 antibody (GTX121453) 5% SDS-PAGE The immunoprecipitated TET3 protein was detected by TET3 antibody (GTX121453) diluted at 1:1000. EasyBlot anti-rabbit IgG (GTX221666-01) was used as a secondary reagent.



GTX121453 WB Image

Non-transfected (-) and transfected (+) 293T whole cell extracts (30 µg) were separated by 5% SDS-PAGE, and the membrane was blotted with TET3 antibody [C3], C-term (GTX121453) diluted at 1:5000. The HRP-conjugated anti-rabbit IgG antibody (GTX213110-01) was used to detect the primary antibody.



GTX121453 WB Image

Non-transfected (-) and transfected (+) 293T whole cell extracts (30 µg) were separated by 5% SDS-PAGE, and the membrane was blotted with TET3 antibody [C3], C-term (GTX121453) diluted at 1:5000. The HRP-conjugated anti-rabbit IgG antibody (GTX213110-01) was used to detect the primary antibody, and the signal was developed with Trident ECL plus-Enhanced.



For full product information, images and publications, please visit our [website](#).