

## FITC Anti-Human CD3 Antibody[OKT-3]

Catalog Number: E-AB-F1001C

**Note:** Centrifuge before opening to ensure complete recovery of vial contents.

### Description

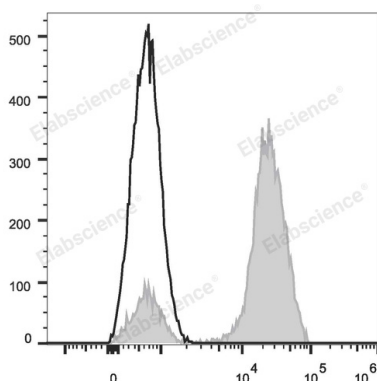
<b>Reactivity</b>	Human
<b>Host</b>	Mouse
<b>Isotype</b>	Mouse IgG2a, κ
<b>Clone No.</b>	OKT-3
<b>Isotype Control</b>	FITC Mouse IgG2a, κ Isotype Control[C1.18.4] [Product E-AB-F09802C]
<b>Conjugation</b>	FITC
<b>Conjugation Information</b>	FITC is designed to be excited by the Blue laser (488 nm) and detected using an optical filter centered near 530 nm (e.g., a 525/40 nm bandpass filter).
<b>Storage Buffer</b>	Phosphate buffered solution, pH 7.2, containing 0.09% stabilizer and 1% protein protectant.

### Applications

### Recommended usage

<b>FCM</b>	Each lot of this antibody is quality control tested by flow cytometric analysis. <b>The amount of the reagent is suggested to be used 5 μL of antibody per test (million cells in 100 μL staining volume or per 100 μL of whole blood).</b> Please check your vial before the experiment. Since applications vary, the appropriate dilutions must be determined for individual use.
------------	---

### Data



Human peripheral blood lymphocytes are stained with FITC Anti-Human CD3 Antibody (filled gray histogram). Unstained lymphocytes (empty black histogram) are used as control.

### Preparation & Storage

<b>Storage</b>	Keep as concentrated solution. This product can be stored at 2-8°C for 12 months. Please protected from prolonged exposure to light and do not freeze. This product is guaranteed up to one year from purchase.
<b>Shipping</b>	Ice bag

### Antigen Information

<b>Alternate Names</b>	CD3E;CD3e;T-cell surface antigen T3/Leu-4 epsilon chain;T-cell surface glycoprotein CD3 epsilon chain;T3E
<b>Uniprot ID</b>	P07766

### For Research Use Only

**Gene ID**

916

**Background**

CD3ε is a 20 kD chain of the CD3/T cell receptor (TCR) complex, which is composed of two CD3ε, one CD3γ, one CD3δ, one CD3ζ (CD247), and a T cell receptor (α/β or γ/δ) heterodimer. It is found on all mature T lymphocytes, NK T cells, and some thymocytes. CD3, also known as T3, is a member of the immunoglobulin superfamily that plays a role in antigen recognition, signal transduction, and T cell activation.

**For Research Use Only**