

Japanese encephalitis virus NS3 antibody

Cat. No. GTX125868

Host	Rabbit
Clonality	Polyclonal
Isotype	IgG
Application	WB, ICC/IF, IHC-P, IHC-Fr
Reactivity	Japanese encephalitis virus

Reference (20)

★★★★★ Review (5)

Package

100 µl, 25 µl

APPLICATION

Application Note

*Optimal dilutions/concentrations should be determined by the researcher.

Suggested dilution	Recommended dilution
WB	1:5000-1:20000
ICC/IF	1:100-1:2000
IHC-P	Assay dependent
IHC-Fr	Assay dependent

Not tested in other applications.

Calculated MW 69 kDa. ([Note](#))

PROPERTIES

Form	Liquid
Buffer	1XPBS pH7, 20% Glycerol
Preservative	0.025% ProClin 300
Storage	Store as concentrated solution. Centrifuge briefly prior to opening vial. For short-term storage (1-2 weeks), store at 4°C. For long-term storage, aliquot and store at -20°C or below. Avoid multiple freeze-thaw cycles.
Concentration	1.45 mg/ml (Please refer to the vial label for the specific concentration.)
Immunogen	Recombinant protein encompassing a sequence within the center region of NS3 (JEV). (Japanese Encephalitis Virus strain Jaoars982) The exact sequence is proprietary.
Purification	Purified by antigen-affinity chromatography.
Conjugation	Unconjugated

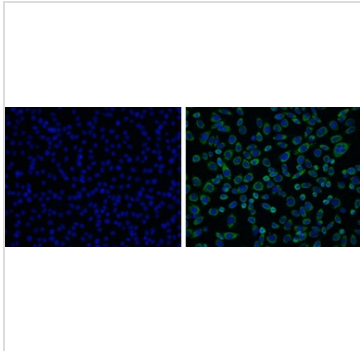


For full product information, images and publications, please visit our [website](#).

For laboratory research use only. Not for any clinical, therapeutic, or diagnostic use in humans or animals. Not for animal or human consumption.

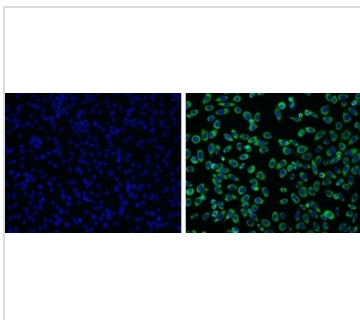
Note
 Purchasers shall not, and agree not to enable third parties to, analyze, copy, reverse engineer or otherwise attempt to determine the structure or sequence of the product.

DATA IMAGES



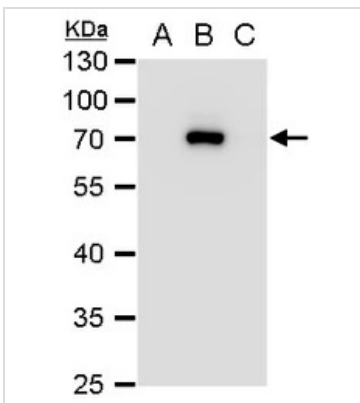
GTX125868 ICC/IF Image

NS3 (Japanese encephalitis virus) antibody detects NS3 (Japanese encephalitis virus) protein by immunofluorescent analysis.
 Samples: BHK-21 cells mock (left) and infected with Japanese encephalitis virus (right) were fixed in paraformaldehyde.
 Green: NS3 (Japanese encephalitis virus) protein stained by NS3 (Japanese encephalitis virus) antibody (GTX125868) diluted at 1:2000.
 Blue: Hoechst 33342 staining.



GTX125868 ICC/IF Image

NS3 (Japanese encephalitis virus) antibody detects NS3 (Japanese encephalitis virus) protein by immunofluorescent analysis.
 Samples: BHK-21 cells mock (left) and infected with Japanese encephalitis virus were fixed in MeOH.
 Green: NS3 (Japanese encephalitis virus) protein stained by NS3 (Japanese encephalitis virus) antibody (GTX125868) diluted at 1:2000.
 Blue: Hoechst 33342 staining.



GTX125868 WB Image

NS3 (Japanese encephalitis virus) antibody detects NS3 (Japanese encephalitis virus) protein by western blot analysis.
 A. 10 µg BHK-21 whole cell extract
 B. 10 µg whole cell extract of Japanese encephalitis virus infected BHK-21 cells
 C. 10 µg whole cell extract of Dengue virus type 2 infected BHK-21 cells
 10% SDS-PAGE
 NS3 (Japanese encephalitis virus) antibody (GTX125868) dilution: 1:10000
 The HRP-conjugated anti-rabbit IgG antibody (GTX213110-01) was used to detect the primary antibody.



For full product information, images and publications, please visit our [website](#).