

Elab Fluor® Violet 450 Anti-Mouse CD3 Antibody[17A2]

Catalog Number: E-AB-F1013UQ

Note: Centrifuge before opening to ensure complete recovery of vial contents.

Description

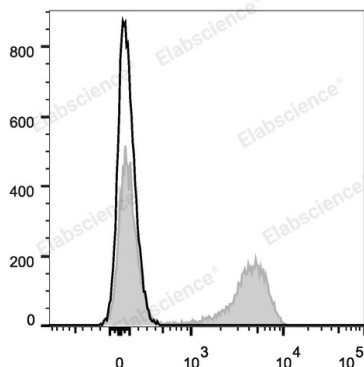
Reactivity	Mouse
Host	Rat
Isotype	Rat IgG2b, κ
Clone No.	17A2
Isotype Control	Elab Fluor® Violet 450 Rat IgG2b, κ Isotype Control[LTF-2] [Product E-AB-F09843Q]
Conjugation	Elab Fluor® Violet 450
Conjugation Information	Elab Fluor® Violet 450 is designed to be excited by the violet laser (405 nm) and detected using an optical filter centered near 450 nm (e.g., a 450/45 nm bandpass filter).
Storage Buffer	Phosphate buffered solution, pH 7.2, containing 0.09% stabilizer and 1% protein protectant.

Applications

Recommended usage

FCM	Each lot of this antibody is quality control tested by flow cytometric analysis. Please check your vial before the experiment. Since applications vary, the appropriate dilutions must be determined for individual use. We suggest each investigator should titrate the reagent to obtain optimal results [The recommended concentration is 0.1-1 $\mu\text{g}/10^6$ cells in 100 μL volume].
------------	---

Data



Mouse splenocytes are stained with Elab Fluor® Violet 450 Anti-Mouse CD3 Antibody (filled gray histogram). Unstained splenocytes (blank black histogram) are used as control.

Preparation & Storage

Storage	Keep as concentrated solution. This product can be stored at 2-8°C for 12 months. Please protected from prolonged exposure to light and do not freeze. This product is guaranteed up to one year from purchase.
Shipping	Ice bag

Antigen Information

Alternate Names	CD3;CD3E/D/G/Z;CD3e/d/g/z;T-cell surface glycoprotein CD 3epsilon/delta/gamma/zeta chain
Uniprot ID	P04235;P11942;P22646;P24161

For Research Use Only

Gene ID

12502

Background

CD3, also known as T3, is a member of the Ig superfamily and primarily expressed on T cells, NK-T cells, and at different levels on thymocytes during T cell differentiation. CD3 is composed of CD3 ϵ , δ , γ and ζ chains. It forms a TCR complex by associating with TCR α/β or γ/δ chains. CD3 plays a critical role in TCR signal transduction, T cell activation, and antigen recognition by binding the peptide/MHC antigen complex.

For Research Use Only