

## Influenza A virus PA protein antibody [HL1388]

**Cat. No. GTX636828**

<b>Host</b>	Rabbit
<b>Clonality</b>	Monoclonal
<b>Isotype</b>	IgG
<b>Application</b>	WB, ICC/IF
<b>Reactivity</b>	Influenza A virus

**Package**  
100 µl, 25 µl

## APPLICATION

**Application Note**

\*Optimal dilutions/concentrations should be determined by the researcher.

Suggested dilution	Recommended dilution
WB	1:500-1:3000
ICC/IF	Assay dependent

Not tested in other applications.

## PROPERTIES

<b>Form</b>	Liquid
<b>Buffer</b>	PBS
<b>Preservative</b>	No Preservative
<b>Storage</b>	Store as concentrated solution. Centrifuge briefly prior to opening vial. For short-term storage (1-2 weeks), store at 4°C. For long-term storage, aliquot and store at -20°C or below. Avoid multiple freeze-thaw cycles.
<b>Concentration</b>	1 mg/ml (Please refer to the vial label for the specific concentration.)
<b>Immunogen</b>	Recombinant protein encompassing a sequence within the C-term region of Influenza A virus PA protein (A/WSN/1933(H1N1)). The exact sequence is proprietary.
<b>Purification</b>	Affinity purified by Protein A.
<b>Conjugation</b>	Unconjugated

**Note**

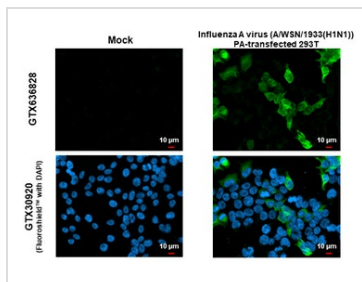
For laboratory research use only. Not for any clinical, therapeutic, or diagnostic use in humans or animals. Not for animal or human consumption.

Purchasers shall not, and agree not to enable third parties to, analyze, copy, reverse engineer or otherwise attempt to determine the structure or sequence of the product.



For full product information, images and publications, please visit our [website](#).

DATA IMAGES



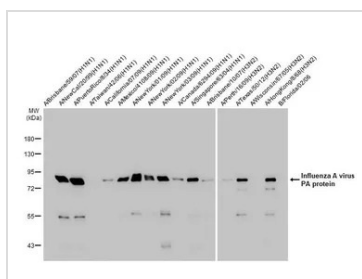
**GTX636828 ICC/IF Image**

Influenza A virus PA protein antibody [HL1388] detects Influenza A virus PA protein protein by immunofluorescent analysis.

Sample: Mock and transfected 293T cells were fixed in 4% paraformaldehyde at RT for 15 min.

Green: Influenza A virus PA protein stained by Influenza A virus PA protein antibody [HL1388] (GTX636828) diluted at 1:500.

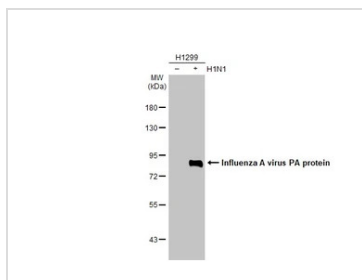
Blue: Fluoroshield with DAPI (GTX30920).



**GTX636828 WB Image**

Influenza A viral lysate and Influenza B viral lysate (0.5 μg) were separated by 7.5% SDS-PAGE, and the membrane was blotted with Influenza A virus PA protein antibody [HL1388] (GTX636828) diluted at 1:1000.

The HRP-conjugated anti-rabbit IgG antibody (GTX213110-01) was used to detect the primary antibody.



**GTX636828 WB Image**

Non-infected (-) and infected (+) H1299 whole cell extracts (1 μg) were separated by 7.5% SDS-PAGE, and the membrane was blotted with Influenza A virus PA protein antibody [HL1388] (GTX636828) diluted at 1:500. The HRP-conjugated anti-rabbit IgG antibody (GTX213110-01) was used to detect the primary antibody.



For full product information, images and publications, please visit our [website](http://www.genetex.com).