

## Recombinant Human EpCAM/TROP-1 Protein(His Tag)

**Catalog Number:** PDMH100313

**Note:** Centrifuge before opening to ensure complete recovery of vial contents.

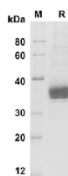
### Description

<b>Species</b>	Human
<b>Source</b>	Mammalian-derived Human EpCAM/TROP-1 proteins Gln24-Lys265,with an C-terminal His
<b>Mol_Mass</b>	26.5 kDa
<b>Accession</b>	P16422
<b>Bio-activity</b>	Not validated for activity

### Properties

<b>Purity</b>	> 90% as determined by reducing SDS-PAGE.
<b>Endotoxin</b>	< 1.0 EU/mg of the protein as determined by the LAL method
<b>Storage</b>	Generally, lyophilized proteins are stable for up to 12 months when stored at -20 to -80°C. Reconstituted protein solution can be stored at 4-8°C for 2-7 days. Aliquots of reconstituted samples are stable at < -20°C for 3 months.
<b>Shipping</b>	This product is provided as lyophilized powder which is shipped with ice packs.
<b>Formulation</b>	Lyophilized from a 0.2 µm filtered solution in PBS with 5% Trehalose and 5% Mannitol.
<b>Reconstitution</b>	It is recommended that sterile water be added to the vial to prepare a stock solution of 0.5 mg/mL. Concentration is measured by UV-Vis.

### Data



SDS-PAGE analysis of Human EpCAM/TROP-1 proteins , 2 µg/lane of Recombinant Human EpCAM/TROP-1 proteins was resolved with SDS-PAGE under reducing conditions , showing bands at 35 KD

### Background

Epithelial Cell Adhesion Molecule (EpCAM) , also known as GA733-2 antigen , is a type I transmembrane glycoprotein composed of an extracellular domain with two EGF-Like repeats and a cystenin-rich region , a transmembrane domain and a cytoplasmic domain. It modulates cell adhesion and proliferation. Its overexpression has been detected in many epithelial tumours and has been associated with high stage , high grade and a worse survival in some tumour types. EpCAM has been shown to function as a calcium-independent homophilic cell adhesion molecule that does not exhibit any obvious relationship to the four known cell adhesion molecule superfamilies. However , recent insights have revealed that EpCAM participates in not only cell adhesion , but also in proliferation , migration and differentiation of cells. In addition , recent study revealed that EpCAM is the Wnt-beta-catenin signaling target gene and may be used to facilitate prognosis. It has oncogenic potential and is activated by release of its intracellular domain , which can signal into the cell nucleus by engagement of elements of the wnt pathway.

### For Research Use Only