

## Sod2 antibody

**Cat. No. GTX124294**

<b>Host</b>	Rabbit
<b>Clonality</b>	Polyclonal
<b>Isotype</b>	IgG
<b>Application</b>	WB, IHC-P, IHC-Wm
<b>Reactivity</b>	Zebrafish

Reference ( 3 )

Package

100 µl, 25 µl

## APPLICATION

**Application Note**

\*Optimal dilutions/concentrations should be determined by the researcher.

Suggested dilution	Recommended dilution
WB	1:500-1:3000
IHC-P	1:100-1:1000
IHC-Wm	1:50-1:500

Not tested in other applications.

## PROPERTIES

<b>Form</b>	Liquid
<b>Buffer</b>	1XPBS (pH7), 20% Glycerol
<b>Preservative</b>	0.025% ProClin 300
<b>Storage</b>	Store as concentrated solution. Centrifuge briefly prior to opening vial. For short-term storage (1-2 weeks), store at 4°C. For long-term storage, aliquot and store at -20°C or below. Avoid multiple freeze-thaw cycles.
<b>Concentration</b>	1 mg/ml (Please refer to the vial label for the specific concentration.)
<b>Immunogen</b>	The immunogen used to generate this antibody corresponds to zebrafish Sod2
<b>Purification</b>	Purified by antigen-affinity chromatography.
<b>Conjugation</b>	Unconjugated

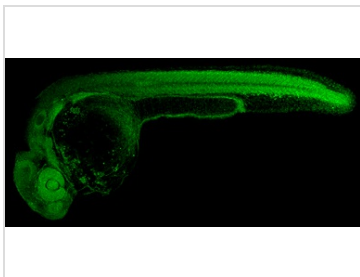
**Note**

For laboratory research use only. Not for any clinical, therapeutic, or diagnostic use in humans or animals. Not for animal or human consumption.

Purchasers shall not, and agree not to enable third parties to, analyze, copy, reverse engineer or otherwise attempt to determine the structure or sequence of the product.

For full product information, images and publications, please visit our [website](#).

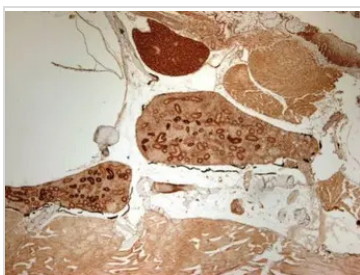
## DATA IMAGES

**GTX124294 IHC-Wm Image**

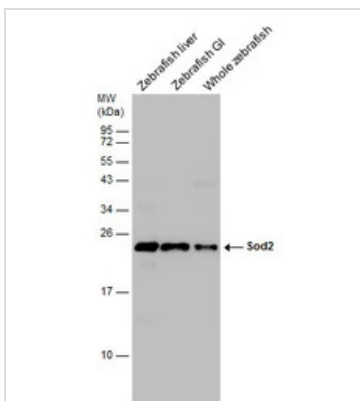
Sod2 antibody detects Sod2 protein on zebrafish by whole mount immunohistochemical analysis.

Sample: 1 day-post-fertilization zebrafish embryo.

Sod2 antibody (GTX124294) dilution: 1:50.

**GTX124294 IHC-P Image**

Immunohistochemical analysis of paraffin-embedded zebrafish kidney ducts, using sod2 (GTX124294) antibody at 1:300 dilution.

**GTX124294 WB Image**

Various tissue extracts (30  $\mu$ g) were separated by 15% SDS-PAGE, and the membrane was blotted with Sod2 antibody (GTX124294) diluted at 1:1000. (GI: gastrointestinal)



For full product information, images and publications, please visit our [website](#).