

Glucagon Mouse Monoclonal Ab

[Images\(2\)](#)

Cat.#: BF8043	Concn.: ~1mg/ml	Mol.Wt.: 25kDa
Size: 100ul	Source: Mouse	Clonality: Monoclonal

Application: IF/ICC 1:100-1:500, WB 1:500-1:2000, IHC 1:50-1:200
*The optimal dilutions should be determined by the end user.

Reactivity: Mouse,Rat

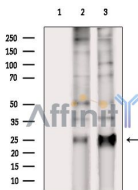
Storage: Mouse IgG1 in phosphate buffered saline (without Mg²⁺ and Ca²⁺), pH 7.4, 150mM NaCl, 0.02% sodium azide and 50% glycerol. Store at -20 °C. Stable for 12 months from date of receipt.

Purification: Affinity-chromatography.

Immunogen: A synthesized peptide derived from human GLP1, corresponding to a region within the internal amino acids.

Uniprot: P01275

Description: GCG Glucagon plays a key role in glucose metabolism and homeostasis. Regulates blood glucose by increasing gluconeogenesis and decreasing glycolysis. A counterregulatory hormone of insulin, raises plasma glucose levels in response to insulin-induced hypoglycemia. Plays an important role in initiating and maintaining hyperglycemic conditions in diabetes. Belongs to the glucagon family. Glucagon release is stimulated by hypoglycemia and inhibited by hyperglycemia, insulin, and somatostatin. GLP-1 and GLP-2 are induced in response to nutrient ingestion.

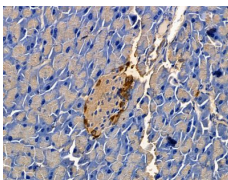


Western blot analysis of extracts from various samples, using Glucagon Mouse Monoclonal Ab.

Lane 1: rat spleen tissue treated with blocking-peptides,

Lane 2: rat spleen tissue,

Lane 3: mouse spleen tissue.



BF8043 at 1/100 staining mouse spleen tissue by IHC-P. The sample was formaldehyde fixed and a heat mediated antigen retrieval step in citrate buffer was performed. The sample was then blocked and incubated with the primary Ab at 4°C overnight. An HRP conjugated anti-Mouse Ab was used as the secondary Ab.

IMPORTANT: For western blot, incubate membrane with diluted primary Ab in 5% w/v milk , 1X TBS, 0.1% Tween@20 at 4°C with gentle shaking, overnight.

For Research Use Only. Not for use in diagnostic and therapeutic procedures. Not for resale without express authorization.