

Ki67 antibody [SP6]

Cat. No. GTX16667

Host	Rabbit
Clonality	Monoclonal
Isotype	IgG
Application	WB, ICC/IF, IHC-P, IHC-Fr, FACS, IHC
Reactivity	Human, Mouse, Rat, Chicken, Pig

Reference (179)

★★★★★ Review (14)

Package
500 µl

PRODUCT

Summary

Ki67 antibody recognizes Ki67 antigen, a nuclear nonhistone protein with a predicted molecular weight of 359 kDa. Ki67 is present during the active phases of the cell cycle and is used clinically as a proliferation marker. Ki67 antibody is used extensively in immunohistochemistry to assess the grade or apparent aggressiveness of various malignancies.

APPLICATION

Application Note

IHC-P: 1:100-1:1000. Staining of formalin-fixed tissues is required by boiling tissue sections in 10mM citrate buffer, pH 6.0 for 10 min followed by cooling at RT for 20 min. WB: 1/200. Predicted molecular weight: 359 kDa. Not tested in other applications

Calculated MW 359 kDa. ([Note](#))

PROPERTIES

Form Liquid**Buffer** Tissue culture supernatant, PBS, BSA**Preservative** 0.09% Sodium azide**Storage** Store as concentrated solution. Centrifuge briefly prior to opening vial. Store at 4°C. DO NOT FREEZE.**Purification** Tissue culture supernatant**Conjugation** Unconjugated

Note

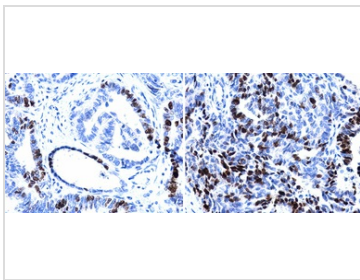
For laboratory research use only. Not for any clinical, therapeutic, or diagnostic use in humans or animals. Not for animal or human consumption.

Purchasers shall not, and agree not to enable third parties to, analyze, copy, reverse engineer or otherwise attempt to determine the structure or sequence of the product.



For full product information, images and publications, please visit our [website](#).

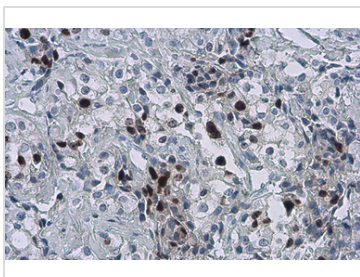
DATA IMAGES

**GTX16667 IHC-P Image**

Ki67 antibody [SP6] detects Ki67 protein at nucleus in human cervical metaplasia (left) and carcinoma (right) by immunohistochemical analysis.

Sample: Paraffin-embedded human cervix.

Ki67 antibody [SP6] (GTX16667) diluted at 1:200.

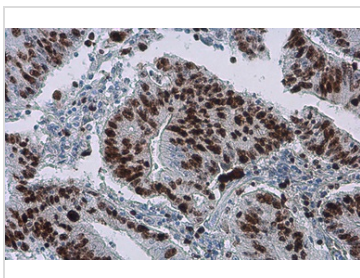
**GTX16667 IHC-P Image**

Ki67 antibody [SP6] detects Ki67 protein at nucleus by immunohistochemical analysis.

Sample: Paraffin-embedded human breast carcinoma.

Ki67 stained by Ki67 antibody [SP6] (GTX16667) diluted at 1:200.

Antigen Retrieval: Citrate buffer, pH 6.0, 15 min

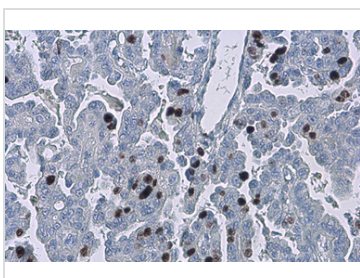
**GTX16667 IHC-P Image**

Ki67 antibody [SP6] detects Ki67 protein at nucleus by immunohistochemical analysis.

Sample: Paraffin-embedded human colon cancer.

Ki67 stained by Ki67 antibody [SP6] (GTX16667) diluted at 1:200.

Antigen Retrieval: Citrate buffer, pH 6.0, 15 min

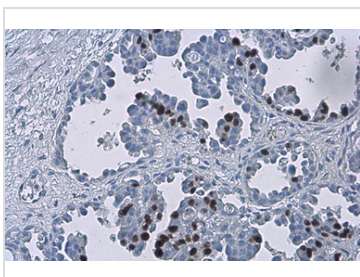
**GTX16667 IHC-P Image**

Ki67 antibody [SP6] detects Ki67 protein at nucleus by immunohistochemical analysis.

Sample: Paraffin-embedded human endometrial carcinoma.

Ki67 stained by Ki67 antibody [SP6] (GTX16667) diluted at 1:200.

Antigen Retrieval: Citrate buffer, pH 6.0, 15 min

**GTX16667 IHC-P Image**

Ki67 antibody [SP6] detects Ki67 protein at nucleus by immunohistochemical analysis.

Sample: Paraffin-embedded human ovarian cancer.

Ki67 stained by Ki67 antibody [SP6] (GTX16667) diluted at 1:200.

Antigen Retrieval: Citrate buffer, pH 6.0, 15 min



For full product information, images and publications, please visit our [website](#).