

50bp DNA Ladder RTU



Cat. No.: SD012-R500

Size: 56 µg / 500 µl

Cat. No.: SD012-R025

Size: 2.8 µg / 25 µl

Description

A unique combination of PCR products and a number of proprietary plasmids digested with appropriate restriction enzymes to yield 17 fragments, suitable for use as molecular weight standards for agarose gel electrophoresis. The DNA includes fragments ranging from 50-1,500 base pairs. The 200, 500 and 1200 base pair bands have increased intensity to serve as reference points. The approximate mass of DNA in each band is provided (0.56 µg a load) for approximating the mass of DNA in comparably intense samples of similar size.

Source

PCR products and double-stranded DNA digested with appropriate restriction enzymes, are phenol extracted and equilibrated to 10 mM Tris-HCl (pH 8.0) and 10mM EDTA.

Range: 50-1,500 base pairs

Number of Bands: 17

Concentration: 112 µg / ml

Recommended Load: 5 µl / well
Containing orange G as tracking dyes.

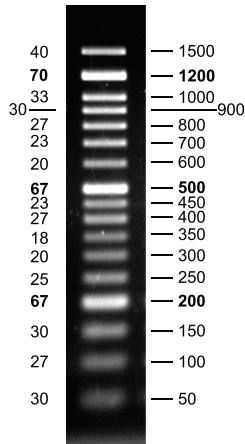
Storage

Store at 4°C for 12 months
Store at -20°C for 24 months

All products are for research use only.

DNA Mass
(ng/5µl)

Base Pairs



2% TAE agarose gel