



Enjoy the clean "blue", experience the pleasure of success!

Innovatively designing SuperKine™ Protein Gel Fast Staining Solution (Coomassie Blue)

Coomassie blue is a commonly used dye for the visualization of proteins (separated by protein gel electrophoresis). Under acidic conditions, Coomassie blue binds to the alkaline and hydrophobic amino acid residues of the protein, and the color is dark blue. The ready to use SuperKine™ Protein Gel Fast Staining Solution (Coomassie Blue) developed by Abbkine has the advantages of short staining time, clear color rendering, good repeatability and high safety, and a clear and clean background can be obtained without decolorization. Based on the classical Coomassie blue staining principle, the target proteins recovered after staining can be used for subsequent MS or sequencing analysis.



Features & Benefits of the Solution

- ★ **Fast response:** Staining can be done in as fast as 10 minutes.
- ★ **Easy to operate:** Ready to use/No need to prepare, can be used directly.
- ★ **High sensitivity:** Can detect proteins as low as 10 ng.
- ★ **High security:** Add unique non-toxic optimized ingredients. No need of methanol and ethanol.

Ordering Information

Cat. No.	Product Name	Size	Price
BMU105-EN	SuperKine™ Protein Gel Fast Staining Solution (Coomassie Blue)	250 mL×2	\$59

Abbkine A manufacturer B manufacturer

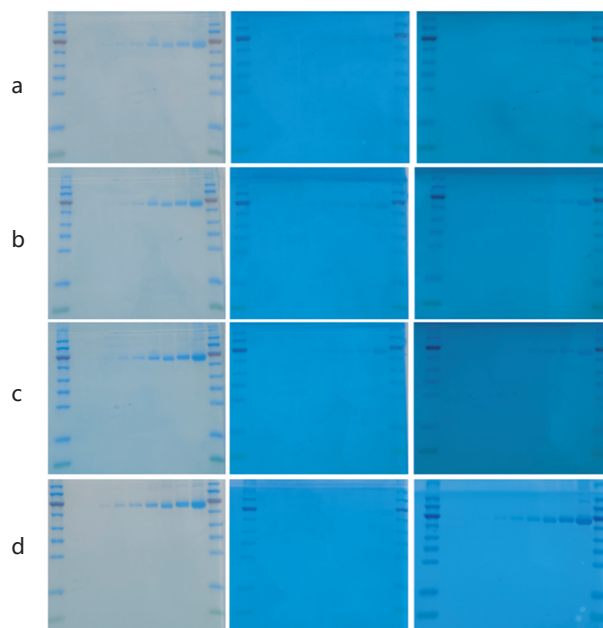


Fig.1 SuperKine™ Protein Gel Fast Staining Solution (Coomassie Blue) was used to stained BSA and compared with staining solutions from A manufacturer and B manufacturer. They were divided into 4 groups: a-Stained for 15 min; b-Stained for 30 min; c-Stained for 1 h; d-Stained for 1 h, Destained for 1 h. The sample loading are Marker,10 ng,20 ng, 50 ng,100ng,200 ng, 500 ng, 1000 ng, 2000 ng, 5000 ng, Marker respectively. The superKine™ Protein Gel Fast Staining Solution (Coomassie Blue) from Abbkine showed much clearer and cleaner results, no matter they were stained for 15 min or 1 h.

Not only provide a fast and convenient SuperKine™ Protein Gel Fast Staining Solution



Abbkine also develops other protein research tools related to SuperKine™ Protein Gel Fast Staining Solution (Coomassie Blue), including prestained protein Marker, ECL, antibody dilution, protein extraction Kit, efficient&general IP/Co-IP Toolkit and other protein research related products.

Product Name	Cat. No.	Application	Size
SuperKine™ West Pico PLUS Chemiluminescent Substrate	BMU101-EN	Chemiluminescent	100 mL
SuperKine™ West Femto Maximum Sensitivity Substrate	BMU102-EN	Chemiluminescent	100 mL
SuperKine™ Enhanced Antibody Dilution Buffer	BMU103-EN	Antibody Diluent	100 mL
Colorcode Prestained Protein Marker (10-180 kDa)	BMM3001	Prestained Protein Marker	100 µL/250 µL×2/250 µL×20
Colorcode Prestained Protein Marker (15-130 kDa)	BMM3002	Prestained Protein Marker	100 µL/250 µL×2/250 µL×20
ExKine™ Total Membrane Protein Extraction Kit	KTP3004	WB, IP, protein purification, etc	50T/200T
ExKine™ Membrane and Cytoplasmic Protein Extraction kit	KTP3005	WB, Protein analysis, Enzyme activity assay	50T/200T
ExKine™ Total Protein Extraction Kit	KTP3006	WB, IP, protein purification, etc	50T/200T
Universal IP/Co-IP Toolkit (Magnetic Beads)	KTD104-EN	IP	20T
Universal IP/Co-IP Toolkit (Agarose)	KTD105-EN	IP	20T
PurKine™ His-Tag Protein Purification Kit (Ni-NTA)	KTP2001	protein purification	1ml/1ml×5
PurKine™ GST-Tag Protein Purification Kit (Glutathione)	KTP2010	protein purification	1ml/1ml×5
PurKine™ Antibody Purification Kit (Protein A/G)	KTP2070	protein purification	1ml/1ml×5

We also provide high quality column method protein extraction kit and hot product series



ExKine™ Pro Total Protein Extraction Kit for Animal Cultured

Different from the traditional solution method, the product can not only avoid the problem of protein loss in solution extraction, but also be easy to operate, and complete the extraction of protein spectrum in 1 to 7 minutes. The extracted protein concentration is up to 20 mg/mL, and the protein phenotypic configuration can be retained, compatible with WB, IP and other downstream experiments.

Cat #: KTP3007

Price / Size: \$39/5T | \$179/50T



Universal Loading Control Antibody Cocktail

The kit is designed for WB experiment, providing a real loading control scheme. The kit contains three of the most commonly used antibodies, GAPDH, β -actin and β -tubulin, can be used for species including human, mouse, and rat. SuperKine™ enhanced antibody dilution buffer are available ready-to-use to enhance the target band. The product has been carefully optimized to achieve better result and make WB experiment easier.

Cat #: KTD101-EN

Price / Size: \$159/1 Kit

Abbkine Scientific Ltd

As the world's unique cell and protein product portfolio supplier, we provide basic tools and solutions in the fields of protein extraction and purification, immunoassays, cell culture separation, and metabolic analysis. Abbkine is committed to customer's success and excellence.

The product listed herein is for research use only and is not intended for use in human or clinical diagnosis.