



Enjoy all the clear bands and relaxed experiences that WB experiments have never had before!

## A Comprehensive range of Unique Western Blot Products

Based on Abbkin proteomics research workstation, we offer WB product portfolio to scientists worldwide, including universal WB toolkit, ECL chemiluminescent substrate, antibody dilution buffer, protein extraction kit, protein quantification kit, loading control antibodies, etc. Professional technical consultation and services, for your one-stop WB process.



The Super-Rapid Protein Quantification Kit (BCA Assay) uses a new special chelating agent different from BCA to achieve rapid, stable and sensitive determination of protein concentration. It only takes 5 min for rapid color determination at room temperature with sensitivity as low as 1 µg/mL. Detection has a linear range of 1-2000 µg/mL and is unaffected by most ionic and non-ionic detergents.

Ordering information: KTD3010-EN | Price/ Size: \$89/500T

- Universal WB Toolkit 🔒 Exclusive
- ECL/Antibody Dilution Buffer 🔥 HOT
- Protein Extraction/Quantification Kit
- Universal Loading Control Antibody



## Universal WB Toolkit Exclusive



Western blotting, is a method to detect certain proteins in complex samples based on the specific recognition of antigens and antibodies. Abbkine developed a universal WB toolkit with complete components to provide all necessary reagents for WB, specifically designed for WB experiments, based on the pain points of traditional WB experiments, which are tedious and time-consuming, a wide variety of reagents and supplies, high background, and poor stability of experimental results.



### Advantages & Features

- The optimized lysis buffer can meet the WB requirements of samples.
- Contain WB positive control, can directly loading, to provide a real WB experiment reference.
- Convenient operation, ready-to-use reagents, no need to prepare complex reagents, open the box can start the experiment.
- Contain SuperKine™ West Femto Maximum Sensitivity Substrate, highly sensitive color development solution, enhances chemical signal for immunological experiments, and achieves excellent experimental results.

### Product Experimental Results

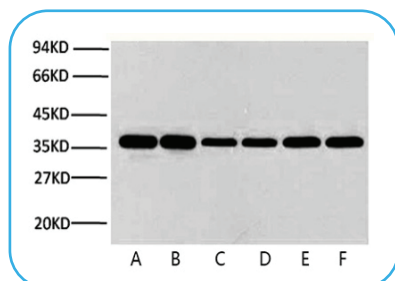


Fig1. Anti-GAPDH Mouse Monoclonal Antibody (2B5) detection effect in Universal WB Toolkit, antibody dilution ratio 1:10 000.

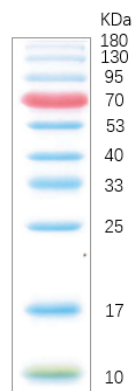


Fig2. Colorcode Prestained Protein Marker (10-180 kDa) detection effect in Universal WB Toolkit, 15% tris glycine SDS-PAGE, loading 5ul.

### Ordering Information

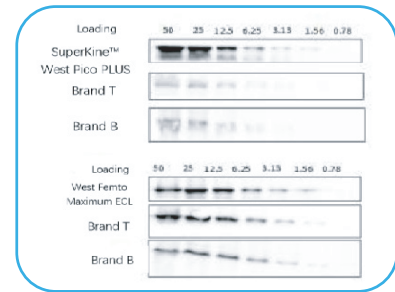
Cat. No.	Kit Components		Size (20T)	Kit Components		Size (20T)
KTD106-EN	Part 1 of 2	Lysis Buffer	2 mL	BSA		3 g
		Running Buffer (10×)	100 mL	PVDF Membrane (8.5 cm×6 cm)		2
		Transfer Buffer (10×)	100 mL	SuperKine™ West Femto Maximum Sensitivity Substrate A		4 mL
		TBST (10×)	100 mL	SuperKine™ West Femto Maximum Sensitivity Substrate B		4 mL
	Part 2 of 2	WB Positive Control	40 μL	Anti-GAPDH Mouse Monoclonal Antibody (2B5)		6 μL
		HRP, Goat Anti-Mouse IgG	3 μL	Colorcode Prestained Protein Marker (10-180 kDa)		5 μL
		HRP, Goat Anti-Rabbit IgG	3 μL	SDS-PAGE Loading Buffer (5×)		1 mL



The Path of Research

## Enhanced & Hypersensitive ECL with High Sensitivity and Durability HOT

Abbkine SuperKine™ Enhanced & Hypersensitive ECL Luminescent solution consists of two components: a peroxide reagent and luminol/enhancer. After the two components is mixed in equal volumes and incubated into an imprinted membrane, which can then be used to test the results using film or imaging system. Due to higher sensitivity and better stability, Abbkine ECL series products can save your expensive antibody, present low-abundance protein expression efficiently and reduce non-specific band interference. It is the best choice of excellent quality and friendly price to meet your various experimental needs.

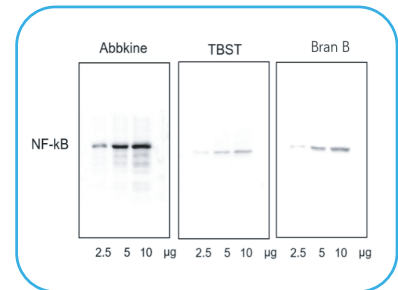


- High sensitivity
- The signal is stable and lasts for 4 hours
- Good compatibility
- Stable performance, can be used repeatedly

Product Name	Cat. No.	Size	Price (\$)
SuperKine™ West Pico PLUS Chemiluminescent Substrate	BMU101-EN	100 mL/500 mL	<b>59/179</b>
SuperKine™ West Femto Maximum Sensitivity Substrate	BMU102-EN	100 mL/500 mL	<b>69/209</b>

## Universal and Enhanced Antibody Dilution Buffer with Great Stability HOT

SuperKine™ Enhanced Antibody diluent is a ready-to-use solution widely suitable for the dilution and formulation of primary or secondary antibodies in immunoassay experiments, such as WB, IF, IHC, ELISA, etc. The unique patented formula adds enhancers, sealers and stabilizers of antibody binding reaction, which can significantly enhance immune signals, reduce non-specific binding, and obtain better results. The diluted antibodies can be recycled repeatedly for stable storage, saving precious antibodies. The product does not contain protein, phosphate, sodium azide or thiomersal preservatives and is suitable for most types of antibody dilution, including HRP and AP labeled antibodies, etc.



- Enhance the signal by more than 50%
- Save 80% valuable antibodies
- Reduce the background by more than 30%
- Suitable for up to 8 immune

Product Name	Cat. No.	Size	Price (\$)
SuperKine™ Enhanced Antibody Dilution Buffer	BMU103-EN	100 mL/500 mL	<b>59/179</b>

## Application for Free Sample

Please contact Abbkine Scientific or your local distributor for more information!

Product Name	Cat. No.	Size
SuperKine™ West Pico PLUS Chemiluminescent Substrate	BMU101-EN-s	6 mL
SuperKine™ West Femto Maximum Sensitivity Substrate	BMU102-EN-s	6 mL
SuperKine™ Enhanced Antibody Dilution Buffer	BMU103-EN-s	20 mL



The Path of Research

## Protein Extraction

The unique ExKine™ protein extraction series, combined with the exclusive extraction reagents and protein separation technology, which can extract cell membrane, nucleus, cytoplasm, whole cell and other proteins separately or in combination. It has unique advantages of simple use, high extraction purity, and diverse specifications. ExKine™ Pro animal (plant) Column Protein Extraction kit uses centrifuge tube technology to extract protein, allowing quick and easy extraction of total protein from animal (plant) samples for protein analysis and further purification.



Ordering information: KTP3007  
Size: 5 T/50 T Price: \$39/\$179

- Optional extraction of natural or denatured proteins.
- No protein loss, protein yield can be as high as 3-20mg/mL
- Simple and fast operation (can be completed within 1-7min)

## Experimental Results

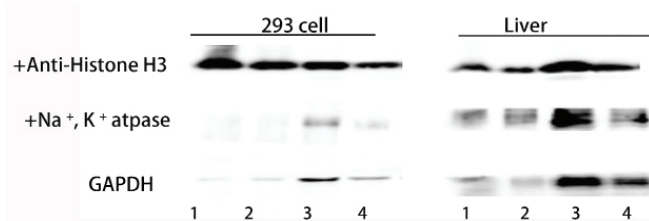


Fig3. Total proteins were extracted from 293 cells and mouse liver. Lane 1, 5 µL proteins extracted by B brand assay kits; Lane 2, 2.5 µL proteins extracted by B brand assay kits; Lane 3, 5 µL proteins extracted by Abbkine Assay Kits (KTP3007); Lane 4, 2.5 µL proteins extracted by Abbkine Assay Kits (KTP3007).

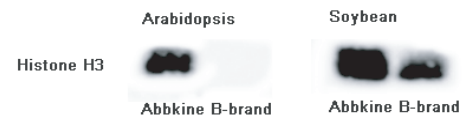


Fig4. Total proteins were extracted from different plants (Oryza, Arabidopsis). Lane left, proteins extracted by Abbkine Assay Kits (KTP3008). Lane right, proteins extracted by B brand Assay Kits. After blocking, incubate with primary antibody (A01110, 1:5000), incubate secondary antibody (A21010, 1:10000), Chemiluminescence (BMU101-CN).

## Ordering Information

Product Name	Cat. No.	Product Description	Size
ExKine™ Pro Total Protein Extraction Kit for Animal Cultured Cells/Tissues	KTP3007	Extraction of total protein from animal tissue-cell (column method)	5 T/50 T
ExKine™ Pro Total Protein Extraction Kit for Plant Tissues	KTP3008	Extraction of total protein from plant tissues	5 T/50 T
ExKine™ Nuclear and Cytoplasmic Protein Extraction Kit	KTP3001	Nuclear-cytoplasmic protein extraction	50 T/200 T
ExKine™ Nuclear Protein Extraction Kit	KTP3002	Nuclear protein extraction	50 T/200 T
ExKine™ Cytoplasmic Protein Extraction Kit	KTP3003	Cytoplasmic protein extraction	50 T/200 T
ExKine™ Total Membrane and Cytoplasmic Protein Extraction Kit	KTP3004	Extraction of total membrane protein (including organelle membrane and nuclear membrane)	50 T/200 T
ExKine™ Membrane and Cytoplasmic Protein Extraction Kit	KTP3005	Cytoplasmic protein & membrane protein extraction (without nuclear membrane)	50 T/200 T
ExKine™ Total Protein Extraction Kit	KTP3006	Total protein extraction	50 T/200 T

## Protein Quantification

Accurate protein quantification is necessary for protein-related experiments. Based on the pain points of traditional protein quantification products such as long time, low sensitivity and poor compatibility, Abbkine has developed a series of reliable protein quantification products including: Super-Rapid Protein Quantification Kit (BCA Assay), protein quantification kit (BCA Assay) and protein quantification kit (Bradford Assay) provide a variety of options for the majority of scientific researchers.



## Experimental Results

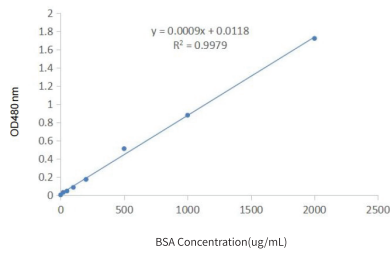


Fig5. The standard curve of Abbkine Super-Rapid Protein Quantification Kit (BCA Assay), 5 minutes room temperature color, fast and time-saving, which has a linear working range of 1-2000 ug/mL. The Protein Quantification results is not affected by chemical substances in most samples, and can be compatible with up to 5% SDS, 5% Triton X-100, 5% Tween20, 60, 80 in the sample.

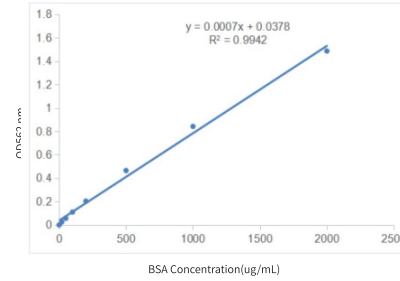


Fig6. The standard curve of Abbkine protein quantification kit (BCA Assay), which has a linear working range of 20-2000 ug/mL. The Protein Quantification results is not affected by chemical substances in most samples, and can be compatible with up to 5% SDS, 5% Triton X-100, 5% Tween20, 60, 80 in the sample.

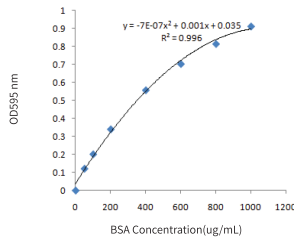


Fig7. The standard curve of Abbkine protein Quantification Kit (Bradford Assay), which has a linear working range of 50-1000 ug/ml, rapid color reaction and is not affected by most chemicals. The compatible concentrations of mercaptoethanol and dithiothreitol in the samples can reach 1mM and 5mM, respectively.

## Ordering Information

Product Name	Cat. No.	Size
Super-Rapid Protein Quantification Kit (BCA Assay)	KTD3010-EN	500 T
Protein Quantification Kit (BCA Assay)	KTD3001	500 T/2000 T/5000 T
Protein Quantification Kit (Bradford Assay)	KTD3002	500 T/2000 T/5000 T

## Loading Control Antibody

The loading control protein is an important reference indicating that the sample has equal protein load in each lane. Abbkine offers a full set of monoclonal and polyclonal loading control antibody combinations with high specificity and multiple application types that can satisfy majority of your protein qualitative, quantitative and localization analysis. In addition to the common human, mouse, rat, we also provide other species of loading control antibodies, as well as large packaging customized services.



- High specificity
- Cost-effective
- Various types of applications
- Wide range of response species

## Product Experiment Results

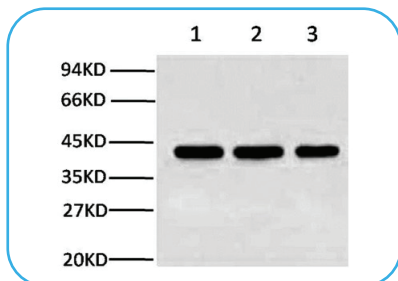


Fig8. Western blot analysis of  $\beta$ -actin expression in Rat brain (lane 1), HeLa cell lysate (lane 2) and Mouse brain (lane 3).

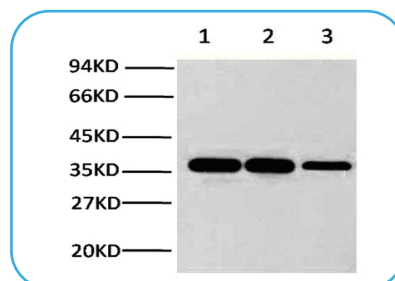


Fig9. Western blot of GAPDH expression in HeLa cell lysate (lane 1), Rat brain (lane 2), and Rabbit muscle (lane 3).

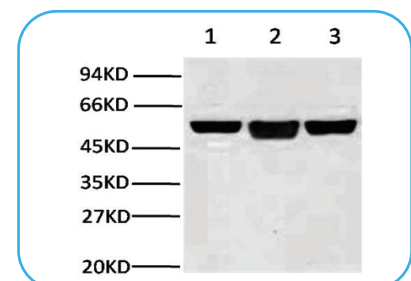


Fig10. Western blot of  $\beta$ -Tubulin expression in Rat brain (lane 1), A549 cell (lane 2) and Mouse brain (lane 3).

Product Name	Cat. No.	Target protein	Reactivity	Application type	Size
Anti-β-Actin Mouse Monoclonal Antibody (1C7)	ABL1010	Whole cell internal control (43KD)	Chicken, Dog, Hamster, Human, Insect, Monkey, Mouse, Rabbit, Rat	WB, IHC-P, IF	50 μL/200 μL/200μLx5
Anti-beta Actin Rabbit Polyclonal Antibody	ABL1011		Chicken, Human, Monkey, Mouse, Rabbit, Rat, Sheep, xenopus	WB, IHC-P	50 μL/200 μL/200μLx5
HRP Conjugated Anti-beta Actin Mouse Monoclonal Antibody (1C7)	ABL1015		Chicken, Dog, Hamster, Human, Insect, Monkey, Mouse, Rabbit, Rat	WB	50 μL/200 μL/200μLx5
Anti-GAPDH Mouse Monoclonal Antibody (2B5)	ABL1020	Whole cell internal control (37KD)	Chicken, Dog, Hamster, Human, Monkey, Mouse, Pig, Rabbit, Rat, Sheep, Yeast	WB, IHC-P, IF	50 μL/200 μL/200μLx5
Anti-GAPDH Rabbit Polyclonal Antibody	ABL1021		Chicken, Human, Monkey, Mouse, Rabbit, Rat, Sheep, xenopus	WB, IHC-P	50 μL/200 μL/200μLx5
Anti-β-Tubulin Mouse Monoclonal Antibody (3G6)	ABL1030	Whole cell internal control (55KD)	Chicken, Dog, Hamster, Human, Insect, Monkey, Mouse, Rabbit, Rat, Sheep, Yeast	WB, IHC-P, IF	50 μL/200 μL/200μLx5
Anti-α-Tubulin Monoclonal Antibody (3G5)	ABL1080	Whole cell internal control (52KD)	Human, Mouse, Rat	WB, IHC-P, IF, IP	50 μL/200 μL/200μLx5
Anti-PCNA Mouse Monoclonal Antibody (1D7)	ABL1040	Nuclear Control (29KD)	Human, Mouse, Rat.	WB, IHC-P, IF	50 μL/200 μL/200μLx5
Anti-Histone H3 Mouse Monoclonal Antibody (2D10)	ABL1070	Nuclear Control (15KD)	Human, mouse, rat, yeast	WB, IHC-P, IF, IP	50 μL/200 μL/200μLx5
Anti-Histone H3 Monoclonal Antibody (2D9)	ABL1100		Zebrafish	WB	50 μL/200 μL/200μLx5
Na <sup>+</sup> /K <sup>+</sup> -ATPase α1 Polyclonal Antibody	ABL1141	Cell Membrane Control (112KD)	Human, mouse, rat	WB, IHC-P, IF	30 μL/100 μL/200μL

Abbkine scientists have long been committed to immunology and cytology research, developing and providing high-quality products to promote the development of life sciences. We provide life science researchers around the world with the basic research tools they need to advance human and animal health research at affordable prices and high quality.

## Abbkine Scientific Ltd

As the world's unique cell and protein product portfolio supplier, we provide basic tools and solutions in the fields of protein extraction and purification, immunoassays, cell culture separation, and metabolic analysis. Abbkine is committed to customer's success and excellence.

The product listed herein is for research use only and is not intended for use in human or clinical diagnosis.

