



Boosting 200% antibody performance with proprietary dilution

Universal and Stable SuperKine™ Enhanced Antibody Dilution Buffer

It is a ready-to-use universal antibody diluent suitable for WB, IF, IHC, ELISA and other immunological detection experiments. The enhancer, blocking agent and stabilizer of the antibody binding reaction are added to enhance the immune response, reduce non-specific binding. It can be used repeatedly and save valuable antibodies. This product does not contain protein, phosphate, sodium azide or thimerosal preservatives, and is suitable for dilution of most types of antibodies, including HRP and AP-labeled antibodies.



Product advantages and features

Save antibodies: Add unique immune signal enhancement components to improve antibody performance and make it easier to obtain detection signals;

Reduce background: No protein components such as BSA, eliminate more interference, and have a stronger signal-to-noise ratio;

Good compatibility: Compatible with PVDF membrane and NC membrane, and compatible with HRP/AP or other chromogenic substrates;

Wide range of applications: It can be used for the dilution and preparation of various primary or secondary antibodies, and used in WB, IF, ELISA as well as other immune experiments;

Easy to use: Ready to use. no preparation required.

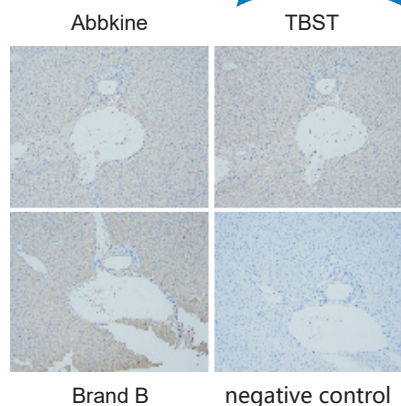


Fig 2. IHC experiment comparison chart. Sample: Mouse liver tissue. The primary antibody is TNF- α polyclonal antibody (ABP0127, 1:200), the secondary antibody is goat anti-rabbit IgG (A21020, 1:300).

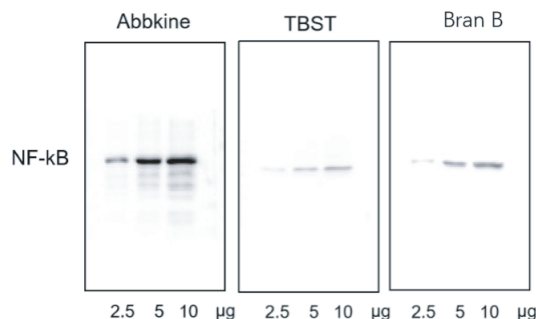


Fig 1. WB experiment comparison chart. Sample: HEK293 cells. Primary antibody: Mouse anti-NF κ B p65 monoclonal antibody (ABM0017, 1:5000), the secondary antibody is goat anti-mouse IgG (A21010, 1:10000).

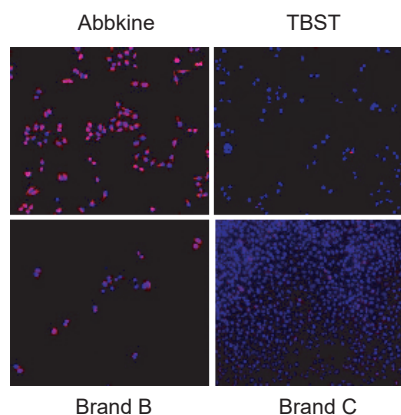


Fig 3. IF experiment comparison chart. Sample: HeLa cells. The primary antibody is CK7 monoclonal antibody (ABM0018, 1:200), and the secondary antibody is goat anti-mouse IgG (A23310, 1:200).

Order Information

| Cat. No. | Product name | Size |
|-----------|--|--------|
| BMU103-EN | SuperKine™ Enhanced Antibody Dilution Buffer | 100 mL |

The affiliated products that Abbkine provides with SuperKine™ Enhanced Antibody Dilution Buffer



We also develop and produce other protein research tools related to antibody diluents for you, including ExKine™ protein extraction and purification, protein quantification kits, WB internal reference antibodies, popular primary/secondary antibodies, and other protein research related products.

| Category | Cat. No. | Product Name | Size |
|---------------------------------|----------|---|--------------------|
| ExKine™ Protein Extraction Kits | KTP3002 | ExKine™ Nuclear Protein Extraction Kit | 50T/200T |
| | KTP3006 | ExKine™ Total Protein Extraction Kit | 50T/200T |
| Protein Quantification | KTD3001 | Protein Quantification Kit (BCA Assay) | 500T/2000T/5000T |
| | KTD3002 | Protein Quantification Kit (Bradford Assay) | 500T/2000T/5000T |
| Loading Control Antibodies | A01010 | Anti-β-Actin Mouse Monoclonal Antibody | 50μl/200μl/200μl*5 |
| | A01020 | Anti-GAPDH Mouse Monoclonal Antibody | 50μl/200μl/200μl*5 |
| | A01030 | Anti-β-Tubulin Mouse Monoclonal Antibody | 50μl/200μl/200μl*5 |
| Selected Primary Antibodies | ABP0059 | Akt Polyclonal Antibody | 100μl |
| | ABP0167 | NFκB-p65 Polyclonal Antibody | 100μl |
| Secondary Antibodies | A24211 | IFKine™ Green Donkey Anti-Mouse IgG | 100μl/500μl |
| | A23220 | Dylight 488, Goat Anti-Rabbit IgG | 100μl/500μl |
| | A23620 | Dylight 649, Goat Anti-Rabbit IgG | 100μl/500μl |
| | A21010 | HRP, Goat Anti-Mouse IgG | 100μl/500μl |
| | A21020 | HRP, Goat Anti-Rabbit IgG | 100μl/500μl |

Extraordinary SuperKine™ ECL substrates and Hot Selling Western Blot Kit



SuperKine™ ECL enhanced/hypersensitive ECL substrates (pg/fg)

In the detection of pico and femto protein, it has extremely high sensitivity; the signal is strong and can last for more than 4 hours; Premixing the two reagents in equal volume, then adding to the blotting membrane for use; it is compatible with both PVDF and NC membrane; it can be used for X-ray film exposure and chemiluminescence imager; after storage at 4-8°C for one year, there is no significant difference in color rendering.

Cat. No. BMU101-EN/BMU102-EN Size: 100 mL



Universal Loading Control Antibody Cocktail

The kit contains GAPDH, β-Actin and β-Tubulin, the three most commonly used internal reference antibodies, which can be used for the detection of human, mouse, and rat samples. It also provides a ready-to-use animal cell total protein WB positive control and immediate SuperKine™ enhanced antibody diluent for use. Compared with purchasing three internal control antibodies and enhanced antibody diluents separately, this kit is extremely cost-effective.

Cat. No. KTD101-EN Size: 1 Kit

Abbkine Scientific Ltd

As the world's unique cell and protein product portfolio supplier, we provide basic tools and solutions in the fields of protein extraction and purification, immunoassays, cell culture separation, and metabolic analysis. Abbkine is committed to customer's success and excellence.

The product listed herein is for research use only and is not intended for use in human or clinical diagnosis.