

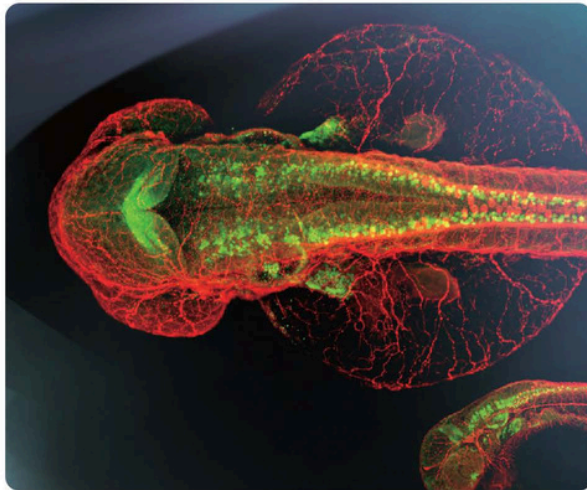
The Leader in Zebrafish-Validated Antibodies

Your Expertise

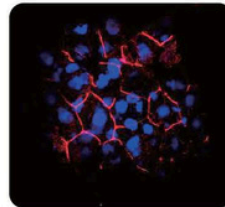
Our Antibodies

Accelerated Discovery

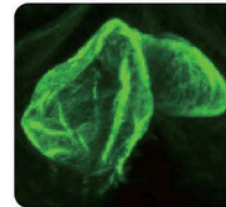
www.genetex.com



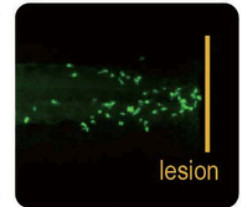
Pax2a antibody (GTX128127)



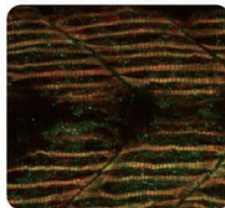
Cdh1 antibody (GTX125890)



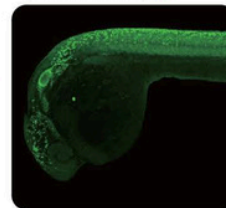
Myl7 antibody (GTX128346)



Mpx antibody (GTX128379)



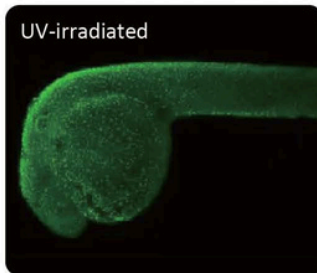
Tnnc1a+b antibody (GTX127369)



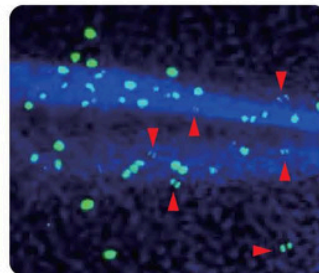
Sox10 antibody (GTX128374)



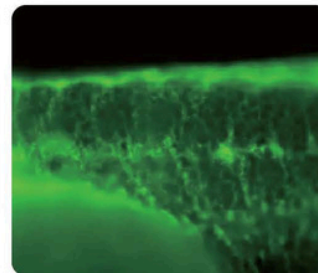
Recombinant Antibodies for Zebrafish Research



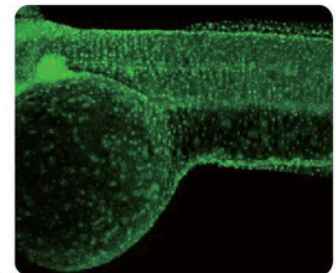
Histone H2A.XS139ph (phospho Ser139) antibody [HL1689] (GTX637288)



Histone H3S10ph (phospho Ser10) antibody [HL1752] (GTX637402)



SDHA antibody [HL1117] (GTX636335)



RPB2 antibody [HL1042] (GTX635976)

Recombinant Citation Support KO/KD Validation Orthogonal Validation Protein Overexpression

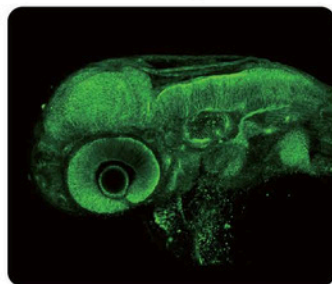
Cat. No.	Product Name	Clonality	Reactivity	Application
GTX637675	beta Actin antibody [HL1926]	Rec Rb mAb	Hu,Ms,Rat,Zfsh,Dm,Cat,Dog	WB, ICC/IF, IHC-P
GTX636986	DNA polymerase beta antibody [HL1512]	Rec Rb mAb	Hu,Ms,Rat,Zfsh	WB, ICC/IF, IHC-P
GTX637408	EIF6 antibody [HL1758]	Rec Rb mAb	Hu,Ms,Rat,Zfsh	WB, IHC-P
GTX636487	GAD65 + GAD67 antibody [HL1181]	Rec Rb mAb	Hu,Ms,Rat,Zfsh,Cat,Dog	WB, ICC/IF, IHC-P
GTX637966	GAPDH antibody [HL2062]	Rec Rb mAb	Hu,Ms,Rat,Zfsh,Cat,Dog	WB, ICC/IF
GTX635477	GPX2 antibody [HL125]	Rec Rb mAb	Hu,Ms,Rat,Zfsh,Dog	WB, IHC-P
GTX637288	Histone H2A.XS139ph (phospho Ser139) antibody [HL1689]	Rec Rb mAb	Zfsh	IHC-Wm
GTX637402	Histone H3S10ph (phospho Ser10) antibody [HL1752]	Rec Rb mAb	Hu,Ms,Zfsh	WB, ICC/IF, IHC-P, IHC-Wm
GTX637005	NPEPPS antibody [HL1531]	Rec Rb mAb	Hu,Ms,Rat,Zfsh,Cat,Dog	WB, ICC/IF, IHC-P
GTX635841	p63 antibody [HL1027]	Rec Rb mAb	Hu,Ms,Zfsh	WB, ICC/IF, IHC-P
GTX637858	PCNA antibody [HL1965]	Rec Rb mAb	Hu,Ms,Rat,Zfsh,Cat,Dog	WB
GTX636799	PDE6D antibody [HL1359]	Rec Rb mAb	Hu,Ms,Rat,Zfsh,Cat,Dog	WB, IHC-P
GTX637427	PGK1 + PGK2 antibody [HL1775]	Rec Rb mAb	Hu,Ms,Rat,Zfsh	WB, IHC-P
GTX635981	RAB6A antibody [HL1047]	Rec Rb mAb	Hu,Ms,Rat,Zfsh	WB, ICC/IF, IHC-P
GTX635976	RPB2 antibody [HL1042]	Rec Rb mAb	Hu,Ms,Rat,Zfsh,Cat,Dog	WB, IHC-P, IHC-Wm
GTX636634	RRM2 antibody [HL1235]	Rec Rb mAb	Hu,Ms,Zfsh	WB, ICC/IF, IHC-P
GTX636335	SDHA antibody [HL1117]	Rec Rb mAb	Hu,Ms,Rat,Zfsh	WB, ICC/IF, IHC-P, IHC-Wm
GTX636957	SOD2 antibody [HL1483]	Rec Rb mAb	Hu,Zfsh	WB, IHC-P
GTX70255	TSG101 antibody [4A10]	Rec Ms mAb	Hu,Ms,Rat,Zfsh,Dog,Hm,Pig,Mk	WB, ICC/IF, IHC-P, FACS, IP, ELISA, EM, IHC, IHC (Free Floating)
GTX637622	Vinculin antibody [HL1873]	Rec Rb mAb	Hu,Ms,Rat,Zfsh,Cat,Dog	WB, IHC-P
GTX635821	VPS35 antibody [HL1017]	Rec Rb mAb	Hu,Ms,Rat,Zfsh,Cat,Dog	WB, ICC/IF, IHC-P, IP

www.GeneTex.com

Antibodies for Zebrafish Research



Elavl3+4 antibody
(GTX128365)



Cdh2 (N-cadherin) antibody
(GTX125962)



Pax6a+b antibody
(GTX128843)

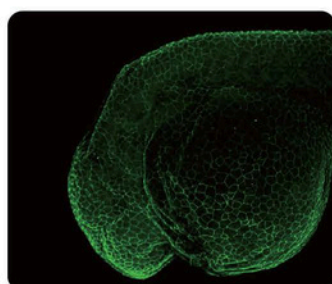


Gfap antibody
(GTX128741)

Cat. No.	Product Name	Clonality	Reactivity	Application
GTX124505	Acta2 antibody	Rb pAb	Hu,Zfsh	WB, IHC-P, IHC-Fr, IHC-Wm
GTX124302	Aldh1a2 antibody	Rb pAb	Zfsh	WB, IHC-Fr, IHC-Wm
GTX124303	alpha Tubulin antibody	Rb pAb	Zfsh	WB, IHC-P, IHC-Wm, IHC
GTX129736	Atp6v1a1 antibody	Rb pAb	Zfsh	WB, IHC-Wm
GTX130820	Atp6v1b2 antibody	Rb pAb	Zfsh	WB, IHC-Wm
GTX124388	Bactin1 antibody	Rb pAb	Zfsh	WB, IHC-P, IHC-Fr, IHC-Wm
GTX101435	beta Catenin antibody [N1N2-2], N-term	Rb pAb	Hu,Ms,Rat,Zfsh,Rb,Cat,Dog	WB, ICC/IF, IHC-P, IHC-Wm, FACS, IP, ChIP assay, IHC
GTX101279	beta Tubulin antibody	Rb pAb	Hu,Ms,Rat,Zfsh,Hm	WB, ICC/IF, IHC-P, IHC-Wm
GTX128348	Bmp4 antibody	Rb pAb	Zfsh	WB
GTX128200	Bmpr1ba+b antibody	Rb pAb	Zfsh	IHC-Wm
GTX125890	Cdh1 antibody	Rb pAb	Zfsh	IHC-Fr, IHC-Wm, IHC
GTX125962	Cdh2 antibody	Rb pAb	Zfsh	WB, IHC-P, IHC-Wm
GTX128752	Cdx4 antibody	Rb pAb	Zfsh	WB, IHC-Wm
GTX133063	Col1a1a antibody	Rb pAb	Zfsh	WB
GTX127988	Col2a1a antibody	Rb pAb	Zfsh	IHC-Fr, IHC-Wm
GTX124479	Cox4i1 antibody	Rb pAb	Zfsh	WB, IHC-P, IHC-Wm
GTX128677	Csf1r antibody	Rb pAb	Zfsh	WB, IHC-P, IHC-Fr
GTX124378	Ctnna antibody	Rb pAb	Zfsh	WB
GTX128324	Ctsl1b antibody	Rb pAb	Zfsh	WB, IHC-Wm
GTX113876	Cullin 4a antibody [N1C1]	Rb pAb	Hu,Zfsh	WB, IHC-Wm
GTX132244	Cxcr4b antibody	Rb pAb	Zfsh	WB
GTX128377	Cyp1a antibody	Rb pAb	Zfsh	WB
GTX110311	Cytokeratin 8 antibody	Rb pAb	Hu,Ms,Zfsh	WB, ICC/IF, IHC-P, IHC-Wm
GTX103878	Dishevelled 2 antibody [N2C2], Internal	Rb pAb	Hu,Ms,Zfsh	WB, IHC-P, IHC-Fr, IHC
GTX102509	Dishevelled 3 antibody [N1N2], N-term	Rb pAb	Hu,Ms,Zfsh	WB, ICC/IF, IHC-P, IHC-Fr, IP, IHC
GTX127330	Dnm2 antibody	Rb pAb	Zfsh	WB, ICC/IF, IHC-Wm
GTX100443	E-Cadherin antibody	Rb pAb	Hu,Ms,Rat,Zfsh,Dog	WB, ICC/IF, IHC-P, IHC-Wm, IP
GTX124538	Ef1a antibody	Rb pAb	Zfsh	WB, IHC-P
GTX124488	Eif2s1 antibody	Rb pAb	Zfsh	WB, IHC-P
GTX128365	Elavl3+4 antibody	Rb pAb	Hu,Zfsh	ICC/IF, IHC-Fr, IHC-Wm
GTX101803	ENO1 antibody [N3C3]	Rb pAb	Hu,Ms,Rat,Zfsh	WB, ICC/IF, IHC-P, IHC-Wm, Dot
GTX111709	Ezrin antibody [N2C2], Internal	Rb pAb	Hu,Ms,Rat,Zfsh	WB, ICC/IF, IHC-P, IHC-Wm
GTX128126	Fgf8a antibody	Rb pAb	Zfsh	IHC-Fr, IHC-Wm
GTX125996	Fmr1 antibody	Rb pAb	Zfsh	WB



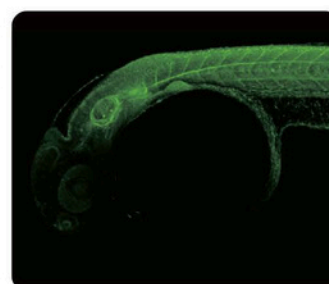
Isl1 antibody
(GTX128201)



beta Catenin antibody [N1N2-2],
N-term (GTX101435)



Aldh1a2 antibody
(GTX124302)



Col2a1a antibody
(GTX127988)

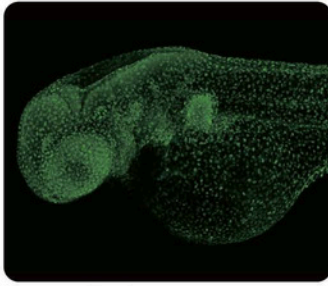
Quality Antibodies . Quality Results

Contact us at:

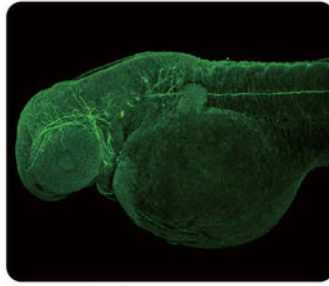
+91 9910 73 8844

info@unibiotech.in

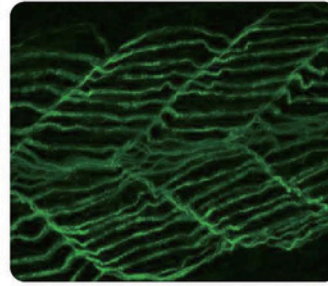
www.unibiotech.in



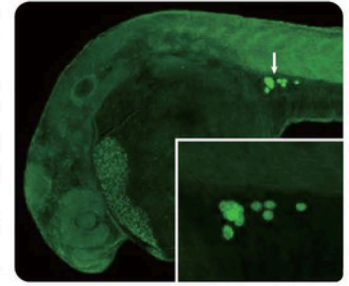
Pcna antibody
(GTX124496)



Vim antibody
(GTX133061)

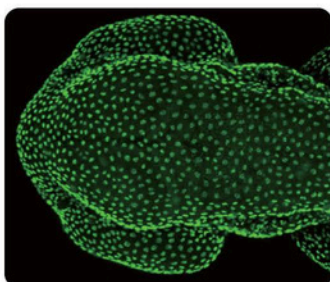


Dnm2 antibody
(GTX127330)

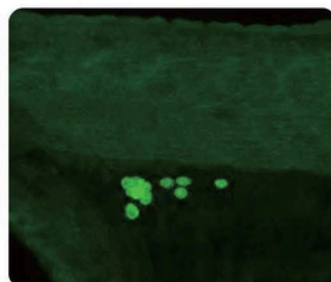


Vasa antibody
(GTX128306)

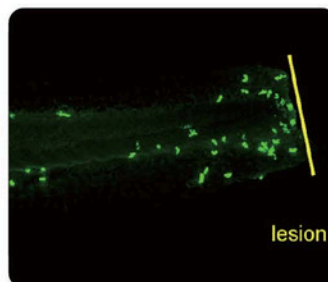
Cat. No.	Product Name	Clonality	Reactivity	Application
GTX125728	Gabra1 antibody	Rb pAb	Zfsh	WB, IHC-P
GTX124355	Gad1b antibody	Rb pAb	Zfsh	WB, IHC-P, IHC-Wm
GTX113286	gamma Tubulin antibody	Rb pAb	Hu, Ms, Rat, Zfsh	WB, ICC/IF, IHC-P, IHC-Wm, IP, IHC (Formalin), IHC
GTX124502	Gapdh antibody	Rb pAb	Hu, Ms, Rat, Zfsh, Dm, Cat, Dog, E. coli	WB, ICC/IF, IHC-P
GTX128333	Gata1a antibody	Rb pAb	Zfsh	WB, IHC-Wm
GTX128741	Gfap antibody	Rb pAb	Zfsh, Fish	WB, ICC/IF, IHC-Fr, IHC-Wm
GTX128280	Gli2a antibody	Rb pAb	Zfsh, Xenopus	WB, IHC-Wm
GTX128636	Hbae1 antibody	Rb pAb	Zfsh	WB, IHC-Wm
GTX131826	Hif1ab antibody	Rb pAb	Zfsh	WB
GTX127342	Histone H2A.XS139ph (phospho Ser139) antibody	Rb pAb	Hu, Zfsh	WB, ICC/IF, IHC-P, IHC-Fr, IHC-Wm, IHC
GTX124375	Hk2 antibody	Rb pAb	Zfsh	WB
GTX101277	HMGB1 antibody	Rb pAb	Hu, Ms, Rat, Zfsh, Pig	WB, ICC/IF, IHC-P, IHC-Wm, IHC, IHC (Free Floating)
GTX101852	hnRNP AB antibody	Rb pAb	Hu, Zfsh	WB, ICC/IF, IHC-P, IHC-Wm, IP, ChIP-seq
GTX101448	Hsp90 beta antibody	Rb pAb	Hu, Ms, Rat, Zfsh	WB, ICC/IF, IHC-P, IHC-Wm, IP, ELISA-Ag
GTX124320	Idh1 antibody	Rb pAb	Zfsh	WB
GTX101691	ILK antibody [N1C1]	Rb pAb	Hu, Ms, Rat, Zfsh	WB, IHC-P, IHC-Wm, IP, IHC
GTX128490	Ins antibody	Rb pAb	Zfsh	IHC-Wm
GTX128201	Isl1 antibody	Rb pAb	Zfsh	WB, IHC-Wm
GTX102807	Islet 1 antibody	Rb pAb	Hu, Ms, Rat, Zfsh	WB, ICC/IF, IHC-P, IHC-Fr, IHC-Wm
GTX113927	Jab1 antibody [N1C1]	Rb pAb	Hu, Ms, Zfsh	WB, ICC/IF, IHC-P, IHC-Wm
GTX124420	Lcp1 antibody	Rb pAb	Zfsh	IHC-P, IHC-Fr, IHC-Wm, IHC
GTX131406	Leptin b antibody	Rb pAb	Zfsh	WB
GTX132379	Lyz antibody	Rb pAb	Zfsh	WB, IHC-Wm
GTX128295	Mafba antibody	Rb pAb	Zfsh	IHC-Wm
GTX125115	Mapk3 antibody	Rb pAb	Zfsh	WB, IHC-P
GTX132692	Mfap4 antibody	Rb pAb	Zfsh	IHC-Wm
GTX128263	Mitfa antibody	Rb pAb	Zfsh, Carp	WB, IHC-Wm
GTX128379	Mpx antibody	Rb pAb	Zfsh, Atlantic salmon	IHC-P, IHC-Fr, IHC-Wm, IHC
GTX124771	Mtor antibody	Rb pAb	Zfsh	WB, IHC-P, IHC-Wm
GTX128816	Myl2 antibody	Rb pAb	Zfsh	WB, IHC-Fr, IHC-Wm, IHC
GTX128346	Myl7 antibody	Rb pAb	Zfsh, Japanese Medaka	WB, IHC-Fr, IHC-Wm
GTX132491	Nanog antibody	Rb pAb	Zfsh	WB
GTX121922	NFYB antibody	Rb pAb	Hu, Ms, Rat, Zfsh	WB, ICC/IF, IHC-P, IHC-Wm, IP, ChIP assay
GTX128357	Nkx2.5 antibody	Rb pAb	Zfsh	IHC-Wm



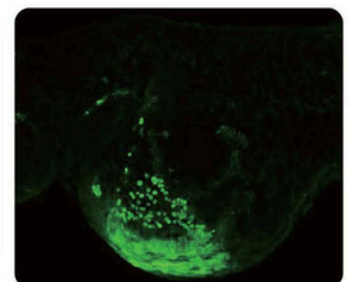
Tp63 antibody
(GTX124660)



Vasa antibody
(GTX128306)



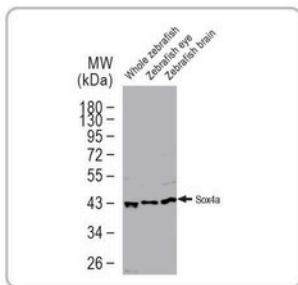
Lyz antibody
(GTX132379)



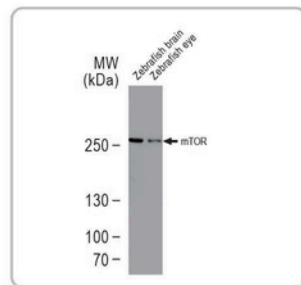
Hbae1 antibody
(GTX128636)

Antibodies for Zebrafish Research

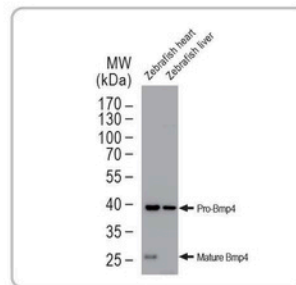
Cat. No.	Product Name	Clonality	Reactivity	Application
GTX101706	nm23-H2 antibody	Rb pAb	Hu,Ms,Zfsh	WB, IHC-P
GTX128127	Pax2a antibody	Rb pAb	Zfsh,Japanese Medaka	WB, IHC-Wm
GTX128843	Pax6a+b antibody	Rb pAb	Zfsh	IHC-Wm
GTX124496	Pcna antibody	Rb pAb	Zfsh,Japanese Medaka, Notohbranchius furzeri	WB, IHC-P, IHC-Fr, IHC-Wm, Immunostaining
GTX124491	Phb antibody	Rb pAb	Zfsh,Teleost	WB, IHC-Wm
GTX113802	Polycystin 2 antibody	Rb pAb	Hu,Zfsh	WB, IHC-P, IHC-Wm
GTX128354	Prox1 antibody	Rb pAb	Zfsh	IHC-P, IHC-Fr, IHC-Wm
GTX128266	PU.1/Spi1 antibody	Rb pAb	Zfsh	WB, IHC-Wm
GTX104015	Pyruvate Dehydrogenase E1 alpha antibody	Rb pAb	Hu,Ms,Rat,Zfsh	WB, ICC/IF, IHC-P, IHC-Wm, IP
GTX127328	Rab11a + Rab11b antibody	Rb pAb	Zfsh	WB, ICC/IF, IHC-Wm, IHC
GTX100469	Rad51 antibody [N1C2]	Rb pAb	Hu,Ms,Rat,Zfsh	WB, ICC/IF, IHC-P, IP
GTX115554	RbAp48 antibody [N1C2]	Rb pAb	Hu,Zfsh	WB, ICC/IF, IHC-P, IHC-Wm
GTX117624	RNase H1 antibody [N2C3]	Rb pAb	Hu,Zfsh	WB, IHC-P
GTX124464	Rpl3 antibody	Rb pAb	Zfsh	WB, IHC-P, IHC-Wm
GTX124294	Sod2 antibody	Rb pAb	Zfsh	WB, IHC-P, IHC-Wm
GTX124477	Sox2 antibody	Rb pAb	Zfsh,Japanese Medaka,Fish	WB, ICC/IF, IHC-P, IHC-Fr, IHC-Wm
GTX132494	Sox3 antibody	Rb pAb	Zfsh	WB, IHC-Fr, IHC-Wm, ChIP assay
GTX132380	Sox32 antibody	Rb pAb	Zfsh	WB
GTX133062	Sox4a antibody	Rb pAb	Zfsh	WB
GTX128370	Sox9a antibody	Rb pAb	Zfsh	WB, IHC-P, IHC-Wm
GTX128374	Sox10 antibody	Rb pAb	Zfsh,Chk,Japanese Medaka	WB, IHC-P, IHC-Fr, IHC-Wm, IHC
GTX125994	Tagln antibody	Rb pAb	Zfsh	WB, IHC-Wm
GTX125869	Thbs4b antibody	Rb pAb	Zfsh	WB, IHC-Wm
GTX127369	Tnnc1a+b antibody	Rb pAb	Zfsh	IHC-Wm
GTX124660	Tp63 antibody	Rb pAb	Zfsh,Fish	WB, IHC-P, IHC-Fr, IHC-Wm, ChIP assay, IHC
GTX114851	Tropomyosin 4 antibody	Rb pAb	Hu,Ms,Rat,Zfsh	WB, IHC-P, IHC-Wm
GTX124352	Tubg1 antibody	Rb pAb	Zfsh	WB, IHC-P, IHC-Fr, IHC-Wm, IHC
GTX132130	Vamp2 antibody	Rb pAb	Zfsh	WB, IHC-Wm, IHC
GTX128306	Vasa antibody	Rb pAb	Zfsh,Japanese Medaka,Fish	WB, ICC/IF, IHC-P, IHC-Wm, IHC
GTX101089	VCP antibody	Rb pAb	Hu,Ms,Rat,Zfsh	WB, ICC/IF, IHC-P, IHC-Fr, IHC-Wm, IP
GTX133061	Vim antibody	Rb pAb	Zfsh	WB, IHC-Wm



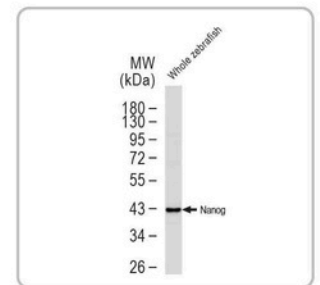
Sox4a antibody
(GTX133062)



Mtor antibody
(GTX124771)



Bmp4 antibody
(GTX128348)



Nanog antibody
(GTX132491)



An ISO 9001:2015 Certified Company
Corporate Office: A-33, 2nd Floor, Ring Road, Rajouri Garden, New Delhi-110027 (INDIA)

