



Abbkine newly launched EliKine™ series of ELISA kits exert high sensibility and specificity, with a comprehensive selection of ELISA kits available for the quantification of cytokines, hormones and other proteins, to meet your multiple experiment demands.



# EliKine ELISA Kits

Unexpected Sensitive and Accurate



## Product Table

### ELISA Overview

- Introduction . . . . .1
- Features . . . . .1
- Components . . . . .1

### EliKine ELISA Kits

- Cytokines . . . . .2
- Hormones . . . . .3
- Other proteins . . . . .4

### Appendix

- Publications . . . . .5

# INTRODUCTION

Focusing on immunology and cytology research fields, Abbkine scientific professionals have been involved in researching, developing and manufacturing high performance immunoassays and cell research reagents all around the world. We are the trusted and dependable supplier to many of the international leading research institutes and clinical diagnostic companies.

With original manufacturing of more than 90% of our products, we are continuing the tradition of developing innovative and featured EliKine™ ELISA kits to meet all of our clients' research needs, and able to provide bulk quantities of most of our products at an economical price.

#### Abbkine EliKine ELISA Kits

##### Specificity

Based on highly specific monoclonal or polyclonal antibody pairs selected for optimal performance.

##### Quality

High quality and stability of standards and other ELISA reagents to ensure high analysis quality.

##### Expertise

Our technical support scientists are ready to help you with every aspect of your research, from troubleshooting to results analysis.

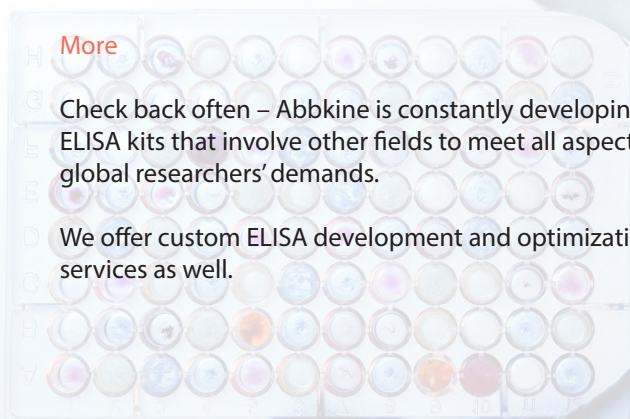
##### Performance

With high sensitivity and accuracy, good repeatability, Abbkine EliKine ELISA kits offer competitive prices for the researchers.

##### More

Check back often – Abbkine is constantly developing new ELISA kits that involve other fields to meet all aspects of global researchers' demands.

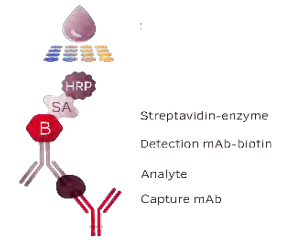
We offer custom ELISA development and optimization services as well.



# A New Generation of EliKine™ ELISA Kits

The enzyme-linked immunosorbent assay (ELISA) is a widely used technique designed for quantifying analytes in solution, such as cytokines, hematological factors, hormones, immunoglobulins and other proteins, present in biological samples. Today, this proved technology continues to have important applications in research areas for immunological conditions, inflammatory responses and disease states.

Combining our selection of featured antibodies or antibody pairs, innovative substrates, exclusive HRP conjugates, and other high quality reagents for detecting and quantifying specific analytes, Abbkine is delighted to offer reproducible and sensitive EliKine ELISA kits for quantification of cytokines, hormones and other proteins with sandwich or competitive ELISA methods, individually.



## Features & Advantages of EliKine™

EliKine sandwich ELISA kits depend on paired capture and detection antibodies, which are both specific to the antigen with different epitopes, while competitive ELISA kits employ the competitive inhibition enzyme immunoassay technique with featured and specific detection antibodies. Exclusive EliKine™ streptavidin-HRP conjugate, and HRP substrate with other optimal components make EliKine portfolio be one of the best and most economical choices for ELISA assay researchers. Our complete, ready-to-use ELISA Kits reduce assay time and variability and are available in either 1 or 10 pre-coated plate options.

- ✓ High efficiency, sensibility and specificity
- ✓ Optimized proposal for high repeatability, more stable
- ✓ 48 test pre-coated package for easy entrance
- ✓ Strip microplate formate with greater flexibility
- ✓ Suitable for multiple types of samples
- ✓ Professional technical support and after-sales service

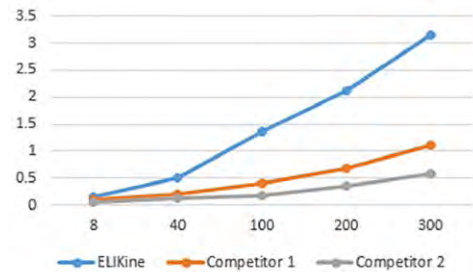


Fig. The Standard range of the EliKine human IL-10 ELISA kit shows enhanced sensitivity compared to that of competitors.

## Components of EliKine™ Sandwich ELISA Kits



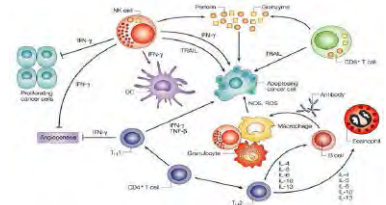
- 96-well strip microplate pre-coated with capture antibody
- Biotinylated detect antibody
- Analyte standard
- EliKine™ streptavidin-HRP conjugate
- Standard diluent
- Assay buffer
- HRP substrate
- Stop solution
- Wash buffer
- Plate cover



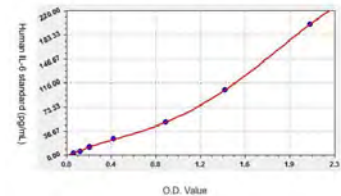
# 1. Cytokines

Cytokines are a broad and loose category of small proteins (~5–20 kDa) that are important in cell signaling. They are produced by a broad range of cells, including immune cells like macrophages, B lymphocytes, T lymphocytes and mast cells, as well as endothelial cells, fibroblasts, and various stromal cells. Cytokines are most often associated with immune modulating molecules such as interleukins, chemokines, and interferons, but can also include other molecules. ELISA is the most popular way to detect cytokines and forms the basis for most other methods in use today.

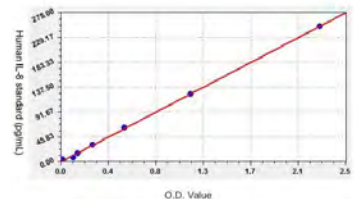
Combining the use of well defined antibodies and reagents with a simple and versatile procedure, EliKine ELISA assay provides a highly sensitive and specific method for measuring a wide range of cytokines across many species.



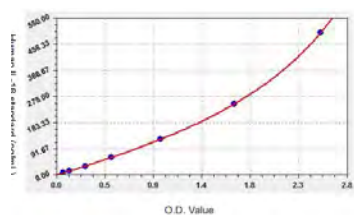
Product Name	Cat. No.	Reactivity	Assay Type
EliKine™ Human IL-1α ELISA Kit	KET6012	Human	Sandwich
EliKine™ Human IL-1β ELISA Kit	KET6013	Human	Sandwich
EliKine™ Human IL-2 ELISA Kit	KET6014	Human	Sandwich
EliKine™ Human IL-4 ELISA Kit	KET6015	Human	Sandwich
EliKine™ Human IL-5 ELISA Kit	KET6016	Human	Sandwich
EliKine™ Human IL-6 ELISA Kit	KET6017	Human	Sandwich
EliKine™ Human IL-8 ELISA Kit	KET6018	Human	Sandwich
EliKine™ Human IL-10 ELISA Kit	KET6019	Human	Sandwich
EliKine™ Human IL-12 p70 ELISA Kit	KET6020	Human	Sandwich
EliKine™ Human IL-13 ELISA Kit	KET6021	Human	Sandwich
EliKine™ Human IL-17 ELISA Kit	KET6022	Human	Sandwich
EliKine™ Human IL-18 ELISA Kit	KET6023	Human	Sandwich
EliKine™ Human IL-22 ELISA Kit	KET6024	Human	Sandwich
EliKine™ Human IL-23 ELISA Kit	KET6025	Human	Sandwich
EliKine™ Mouse IL-1α ELISA Kit	KET7004	Mouse	Sandwich
EliKine™ Mouse IL-1β ELISA Kit	KET7005	Mouse	Sandwich
EliKine™ Mouse IL-2 ELISA Kit	KET7006	Mouse	Sandwich
EliKine™ Mouse IL-4 ELISA Kit	KET7007	Mouse	Sandwich
EliKine™ Mouse IL-5 ELISA Kit	KET7008	Mouse	Sandwich
EliKine™ Mouse IL-6 ELISA Kit	KET7009	Mouse	Sandwich
EliKine™ Mouse IL-10 ELISA Kit	KET7010	Mouse	Sandwich
EliKine™ Mouse IL-12 p70 ELISA Kit	KET7011	Mouse	Sandwich
EliKine™ Mouse IL-17 ELISA Kit	KET7012	Mouse	Sandwich
EliKine™ Mouse IL-22 ELISA Kit	KET7013	Mouse	Sandwich



EliKine™ Human IL-6 ELISA Kit  
Detection range: 3.125 pg/ml-200 pg/ml

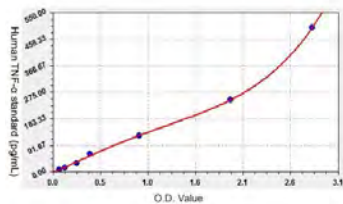


EliKine™ Human IL-8 ELISA Kit  
Detection range: 3.9 pg/ml-250 pg/ml

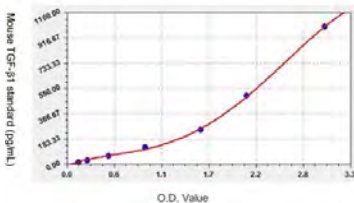


EliKine™ Human IL-1β ELISA Kit  
Detection range: 7.8pg/ml-500 pg/ml

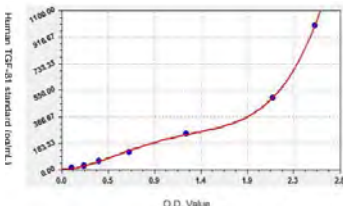




EliKine™ Human TNF-α ELISA Kit  
Detection range: 7.8 pg/ml-500 pg/ml



EliKine™ Mouse TGF-β1 ELISA Kit  
Detection range: 15.625 pg/ml-1000 pg/ml



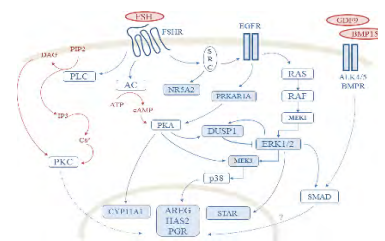
EliKine™ Human TGF-β1 ELISA Kit  
Detection range: 15.625 pg/ml-1000 pg/ml

Product Name	Cat. No.	Reactivity	Assay Type
EliKine™ Rat IL-1β ELISA Kit	KET9001	Rat	Sandwich
EliKine™ Rat IL-2 ELISA Kit	KET9002	Rat	Sandwich
EliKine™ Rat IL-4 ELISA Kit	KET9003	Rat	Sandwich
EliKine™ Rat IL-6 ELISA Kit	KET9004	Rat	Sandwich
EliKine™ Rat IL-17 ELISA Kit	KET9005	Rat	Sandwich
EliKine™ Human G-CSF ELISA Kit	KET6007	Human	Sandwich
EliKine™ Human GM-CSF ELISA Kit	KET6008	Human	Sandwich
EliKine™ Mouse GM-CSF ELISA Kit	KET7002	Mouse	Sandwich
EliKine™ Human IFN-α ELISA Kit	KET6010	Human	Sandwich
EliKine™ Human IFN-γ ELISA Kit	KET6011	Human	Sandwich
EliKine™ Mouse IFN-γ ELISA Kit	KET7003	Mouse	Sandwich
EliKine™ Human TNF-α ELISA Kit	KET6032	Human	Sandwich
EliKine™ Mouse TNF-α ELISA Kit	KET7015	Mouse	Sandwich
EliKine™ Rat TNF-α ELISA Kit	KET9007	Rat	Sandwich
EliKine™ Human TGF-β1 ELISA Kit	KET6030	Human	Sandwich
EliKine™ Mouse TGF-β1 ELISA Kit	KET7014	Mouse	Sandwich
EliKine™ Rat TGF-β1 ELISA Kit	KET9006	Rat	Sandwich
EliKine™ Human EGF ELISA Kit	KET6005	Human	Sandwich
EliKine™ Human bFGF ELISA Kit	KET6006	Human	Sandwich
EliKine™ Human HGF ELISA Kit	KET6009	Human	Sandwich
EliKine™ Human β-NGF ELISA Kit	KET6028	Human	Sandwich
EliKine™ Human VEGF-A ELISA Kit	KET6033	Human	Sandwich
EliKine™ Mouse VEGF-A ELISA Kit	KET7016	Mouse	Sandwich
EliKine™ Human Resistin ELISA Kit	KET6029	Human	Sandwich
EliKine™ Rat VEGF-A ELISA Kit	KET9008	Rat	Sandwich

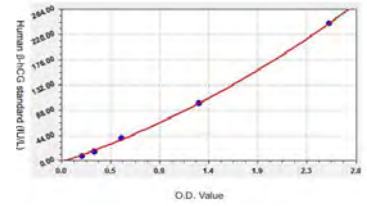
## 2. Hormones

A hormone is any member of a class of signaling molecules produced by glands in multicellular organisms that are transported by the circulatory system to target distant organs to regulate physiology and behaviour. Hormones have diverse chemical structures, mainly of 3 classes are eicosanoids, steroids, and amino acid/protein derivatives. Hormones are used to communicate between organs and tissues for physiological regulation and behavioral activities, such as digestion, metabolism, tissue function.

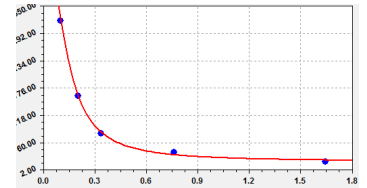
Besides sandwich ELISA, the competitive ELISA is also used to measure the concentration of small molecules, such as hormones, peptides, in a sample by detecting interference in an expected signal output.



Product Name	Cat. No.	Reactivity	Assay Type
EliKine™ Human $\beta$ -hCG ELISA Kit	KET6901	Human	Sandwich
EliKine™ Human LH ELISA Kit	KET6902	Human	Sandwich
EliKine™ Human FSH ELISA Kit	KET6903	Human	Sandwich
EliKine™ Human Prolactin ELISA Kit	KET6904	Human	Sandwich
EliKine™ Human TSH ELISA Kit	KET6905	Human	Sandwich
EliKine™ Testosterone ELISA Kit	KET0001	Universal	Competitive
EliKine™ Progesterone ELISA Kit	KET0002	Universal	Competitive
EliKine™ Estradiol ELISA Kit	KET0003	Universal	Competitive
EliKine™ Free Triiodothyronine (fT3) ELISA Kit	KET0004	Universal	Competitive
EliKine™ Free Thyroxine (fT4) ELISA Kit	KET0005	Universal	Competitive
EliKine™ Triiodothyronine (T3) ELISA Kit	KET0006	Universal	Competitive
EliKine™ Thyroxine (T4) ELISA Kit	KET0007	Universal	Competitive



EliKine™ Human  $\beta$ -hCG ELISA Kit  
Detection range: 8 IU/L-240 IU/L

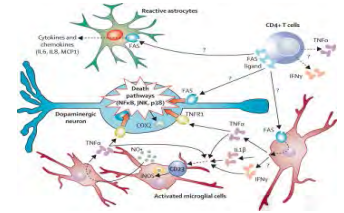


EliKine™ Thyroxine (T4) ELISA Kit  
Detection range: 20 ng/ml-320 ng/ml

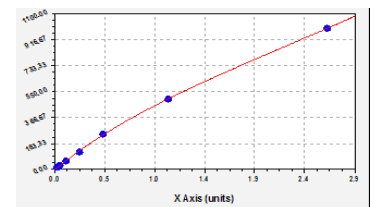
### 3. Other proteins

EliKine ELISA Kits also cover other proteins to satisfy your biology research needs. Our aim is to provide high quality products and good service for researchers from all over the world and to promote the scientific progress.

Abbkine is constantly developing new ELISA kits that involve cytokines, hematological factors, hormones, peptides and immunoglobulins to meet all aspects of global researchers' demands.



Product Name	Cat. No.	Reactivity	Assay Type
EliKine™ Human Leptin ELISA Kit	KET6026	Human	Sandwich
EliKine™ Human MMP-9 ELISA Kit	KET6027	Human	Sandwich
EliKine™ Human TIMP-1 ELISA Kit	KET6031	Human	Sandwich
EliKine™ Human CCL3 ELISA Kit	KET6002	Human	Sandwich
EliKine™ Human CD54 ELISA Kit	KET6003	Human	Sandwich
EliKine™ Mouse CCL2 ELISA Kit	KET7001	Mouse	Sandwich
EliKine™ Human CCL2 ELISA Kit	KET6001	Human	Sandwich
EliKine™ Human CCL3 ELISA Kit	KET6002	Human	Sandwich
EliKine™ Human CRP ELISA Kit	KET6004	Human	Sandwich



EliKine™ Human CCL2 ELISA Kit  
Detection range: 15.6 pg/ml-1000 pg/ml



## Part of Abbkine Product Publications

Abbkin products have been widely cited and recommended by hundreds and thousands of world's life science research journals. Below are part of publications list.

If you have published articles using Abbkin's products, kindly send email to [marketing@abbkine.com](mailto:marketing@abbkine.com), or submit your publications [online here](#). We'll reward you gift for your continue research.



Zhao, Guang-Nian, et al. Tmbim1 is a multivesicular body regulator that protects against non-alcoholic fatty liver disease in mice and monkeys by targeting the lysosomal degradation of Tlr4 AOP. *Nature Medicine*, Published online 08 May 2017. IF: 30.357.

Xu H J, Xue J, Lu B, et al. Two insulin receptors determine alternative wing morphs in planthoppers. *Nature*, 2015, 519(7544): 464-467. IF: 38.138.

Huang, Hai-Jian, et al. Rice ragged stunt virus-induced apoptosis affects virus transmission from its insect vector, the brown planthopper to the rice plant. *Scientific reports* 5 (2015). IF: 5.228.

Yu L, Liang H, Lu Z, et al. Membrane receptor-dependent Notch1/Hes1 activation by melatonin protects against myocardial ischemia-reperfusion injury: in vivo and in vitro studies. *Journal of pineal research*, 2015, 59(4): 420-433. IF: 9.314.

Chen G, Tian F, Li C, et al. In vivo real-time visualization of mesenchymal stem cells tropism for cutaneous regeneration using NIR-II fluorescence imaging. *Biomaterials*, 2015, 53: 265-273. IF: 8.387.

Li C, Cao L, Zhang Y, et al. Preoperative Detection and Intraoperative Visualization of Brain Tumors for More Precise Surgery: A New Dual-Modality MRI and NIR Nanoprobe. *Small*, 2015, 11(35): 4517-4525. IF: 8.315.

Liu S L, Wu Q M, Zhang L J, et al. Three-Dimensional Tracking of Rab5- and Rab7- Associated Infection Process of Infl uenza Virus. *Small*, 2014, 10(22): 4746-4753. IF: 8.315.

Long Y M, Zhao X C, Clermont A C, et al. Negatively charged silver nanoparticles cause retinal vascular permeability by activating plasma contact system and disrupting adherens junction. *Nanotoxicology*, 2016, 10(4): 501-511. IF: 7.913.

Xue X, Wang Q, Qu Y, et al. Development of the photosynthetic apparatus of *Cunninghamia lanceolata* in light and darkness. *New Phytologist*, 2016. IF: 7.21.

Li Y, Zhang L, Li D, et al. The Arabidopsis F-box E3 ligase RIFP1 plays a negative role in abscisic acid signalling by facilitating ABA receptor RCAR3 degradation. *Plant, cell & environment*, 2016, 39(3): 571-582. IF: 6.169.

Niu, Xuan, et al. P2Y12 Promotes Migration of Vascular Smooth Muscle Cells Through Cofilin Dephosphorylation During Atherogenesis. *Arteriosclerosis, Thrombosis, and Vascular Biology* (2017): ATVBABA-116. IF: 6.01.

Zheng, Xiaoyao, et al. A hybrid siRNA delivery complex for enhanced brain penetration and precise amyloid plaque targeting in Alzheimer's disease mice. *Acta Biomaterialia* (2016). IF: 6.008.

Ji Y X, Zhang P, Zhang X J, et al. The ubiquitin E3 ligase TRAF6 exacerbates pathological cardiac hypertrophy via TAK1-dependent signalling. *Nature communications*, 2016, 7. IF: 11.329.

Zheng, Peng, et al. Quantitative Proteomics Analysis Reveals Novel Insights into Mechanisms of Action of Long Noncoding RNA Hox Transcript Antisense Intergenic RNA (HOTAIR) in HeLa Cells. *Molecular & Cellular Proteomics* 14.6 (2015): 1447-1463. IF:5.912.

Yang L, Tang H, Kong Y, et al. LGR5 Promotes Breast Cancer Progression and Maintains Stem-Like Cells Through Activation of Wnt/ $\beta$ -Catenin Signaling. *Stem Cells*, 2015, 33(10): 2913-2924. IF: 5.902.

Wan, Quanyuan, et al. MDA5 Induces a Stronger Interferon Response than RIG-I to GCRV Infection through a Mechanism Involving the Phosphorylation and Dimerization of IRF3 and IRF7 in CIK Cells. *Frontiers in Immunology* 8 (2017): 189. IF: 5.695.

Li H T, Zhao X Z, Zhang X R, et al. Exendin-4 Enhances Motor Function Recovery via Promotion of Autophagy and Inhibition of Neuronal Apoptosis After Spinal Cord Injury in Rats. *Molecular neurobiology*, 2015: 1-10. IF: 5.397.

Fang Z, He Q W, Li Q, et al. MicroRNA-150 regulates blood-brain barrier permeability via Tie-2 after permanent middle cerebral artery occlusion in rats. *The FASEB Journal*, 2016, 30(6): 2097-2107. IF: 5.299.

Zheng T, Yang X, Wu D, et al. Salidroside ameliorates insulin resistance through activation of a mitochondria-associated AMPK/PI3K/Akt/GSK3 $\beta$  pathway. *British journal of pharmacology*, 2015, 172(13): 3284-3301. IF: 5.259.

Lv, Meinan, et al. Characterization of a C3 Deoxygenation Pathway Reveals a Key Branch Point in Aminoglycoside Biosynthesis. *Journal of the American Chemical Society* 138.20 (2016): 6427-6435. IF: 13.038.

Liu, L, et al. Baclofen mediates neuroprotection on hippocampal CA1 pyramidal cells through the regulation of autophagy under chronic cerebral hypoperfusion. *Scientific Reports* 5(2015):14474. IF: 5.228.

Abbkine Scientific Co., Ltd. was founded by a number of scientists and marketing experts in the field of life science in California, USA in 2012. With growing demands from Asia Pacific, it move its headquarters to China. Combining cutting edge technology from United States with China's manufacturing engineering and cost advantages, we aim to provide innovative, high quality assay kits, recombinant proteins, antibodies and other research tools to accelerate life science fundamental research, drug discovery, etc.

#### Contact us

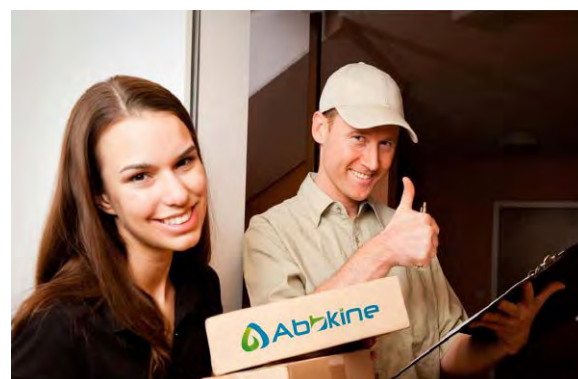
Tel: +86-27-59716789

Fax: +86-27-59716788

Email: [service@abbkine.com](mailto:service@abbkine.com)

<http://www.abbkine.com>

Or your local distributors



[www.abbkine.com](http://www.abbkine.com)

---

Our mission is to help make research possible by supplying scientists worldwide with the basic research tools necessary for advancing human and animal health. We would achieve these goals through a well-defined core strategy and a company culture that fosters integrity, openness, and collaboration, and rewards customer focus, innovation and ownership, thus offer global life science researchers with the highest quality products with an affordable pricing policy.

