

# IVD-related Products

Your Expertise

Our Antibodies

Accelerated Discovery

## Top-Quality Recombinant Monoclonal Antibodies & Recombinant Proteins



- High Reproducibility
- High Specificity
- Performance Consistency
- Scalable Bulk Production
- International QMS Certifications
- Stringent Validation and Assessment

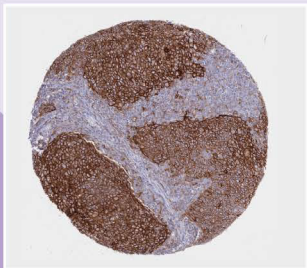
Quality Antibodies · Quality Results

Citation Support
 Recombinant
 KO/KD Validation
 Comparable Abs
 Orthogonal Validation
 Protein Overexpression
 HistoMAX

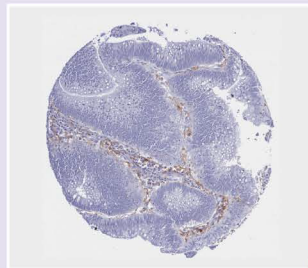
## Immunohistochemistry – Paraffin (IHC-P)

- Protocol information for both manual staining and for widely used autostainers: Dako/Bond RX/Ventana
- Validation performed on more than 70 human normal tissues and relevant tumor sections

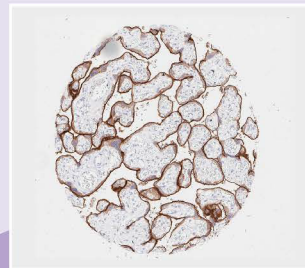
### PD-L1 antibody [HL1041] (GTX635975)



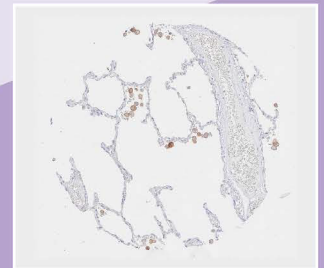
PD-L1 (+)  
Oral squamous cell carcinoma



PD-L1 (-)  
Colorectal adenocarcinoma  
PD-L1 (+)  
Inflammatory cells



Placenta (mature)  
PD-L1 (+)  
Syncytiotrophoblast



Lung  
PD-L1 (+)  
Alveolar macrophages

Her2 / ErbB2 antibody [MSVA-340R] HistoMAX (GTX04428)	Prostatic Acid Phosphatase antibody [MSVA-452M] HistoMAX (GTX04396)	Synaptophysin antibody [MSVA-462R] HistoMAX (GTX04371)	Cytokeratin 14 antibody [MSVA-614R] HistoMAX (GTX04377)	EpCAM antibody [MSVA-326R] HistoMAX (GTX04380)	LI-Cadherin antibody [MSVA-517M] HistoMAX (GTX04447)
Breast Cancer	Prostatic Adenocarcinoma	Thyroid Medullary Carcinoma	Esophageal Squamous Cell Carcinoma	Lung Adenocarcinoma	Ileal Neuroendocrine Tumor
Normal Breast	Normal Appendix Mucosa	Normal Cerebellum	Normal Skin Squamous Epithelium	Normal Kidney	Normal Rectum Mucosa





## Enzyme-linked Immunosorbent Assay (ELISA)

<p>SARS-CoV-2 Neutralizing Antibody ELISA Kit (Omicron BA.1 / BA.2 / BA.4 / BA.5) (GTX537233)</p>															
	<table border="1"> <tr> <td></td> <td>IL6</td> <td>Enterovirus D68</td> <td>Tau (p Thr181)</td> <td>ANP</td> </tr> <tr> <td>Capture</td> <td>IL6 antibody [GT1535] (GTX636571)</td> <td>Enterovirus D68 VP1 antibody [GT11610] (GTX633688)</td> <td>Tau (phospho Thr181) antibody [HL2497] (GTX638855)</td> <td>ANP antibody [GT1068] (GTX634219)</td> </tr> <tr> <td>Detection</td> <td>IL6 antibody [HL2389] (GTX638598)</td> <td>Enterovirus D68 VP1 antibody [HL1997] (GTX637898)</td> <td>Tau (phospho Thr181) antibody [HL2498] (GTX638856)</td> <td>ANP antibody [HL2617] (GTX639071)</td> </tr> </table>		IL6	Enterovirus D68	Tau (p Thr181)	ANP	Capture	IL6 antibody [GT1535] (GTX636571)	Enterovirus D68 VP1 antibody [GT11610] (GTX633688)	Tau (phospho Thr181) antibody [HL2497] (GTX638855)	ANP antibody [GT1068] (GTX634219)	Detection	IL6 antibody [HL2389] (GTX638598)	Enterovirus D68 VP1 antibody [HL1997] (GTX637898)	Tau (phospho Thr181) antibody [HL2498] (GTX638856)
	IL6	Enterovirus D68	Tau (p Thr181)	ANP											
Capture	IL6 antibody [GT1535] (GTX636571)	Enterovirus D68 VP1 antibody [GT11610] (GTX633688)	Tau (phospho Thr181) antibody [HL2497] (GTX638855)	ANP antibody [GT1068] (GTX634219)											
Detection	IL6 antibody [HL2389] (GTX638598)	Enterovirus D68 VP1 antibody [HL1997] (GTX637898)	Tau (phospho Thr181) antibody [HL2498] (GTX638856)	ANP antibody [HL2617] (GTX639071)											

## Lateral Flow Assay (LFA)



	<p>SARS-CoV-2 (COVID-19)</p>	<p>Influenza A Virus (Flu A)</p>	<p>Influenza B Virus (Flu B)</p>	<p>Respiratory Syncytial Virus (RSV)</p>	<p>3-in-1 Test for SARS-CoV-2, Flu A and Flu B</p>			<p>Human Papillomavirus type 16 (HPV 16)</p>
Capture	SARS-CoV-2 N antibody [HL455] (GTX635688)	Flu A NP antibody [HL1078] (GTX636199)	Flu B NP antibody [HL1069] (GTX636100)	RSV NP antibody [HL1248] (GTX636650)	SARS-CoV-2 N antibody [HL455] (GTX635688)	Flu A NP antibody [HL1952] (GTX637789)	Flu B NP antibody [HL1073] (GTX636194)	HPV type 16 E7 antibody [HL1647] (GTX637228)
Detection	SARS-CoV-2 N antibody [HL448] (GTX635686)	Flu A NP antibody [HL1953] (GTX637790)	Flu B NP antibody [HL1068] (GTX636099)	RSV NP antibody [HL1246] (GTX636648)	SARS-CoV-2 N antibody [HL5511] (GTX635689)	Flu A NP antibody [HL1078] (GTX636199)	Flu B NP antibody [HL1068] (GTX636099)	HPV type 16 E7 antibody [HL1821] (GTX637546)
Samples	1. SARS-CoV-2 N (GTX135592-pro) 2. Lysis buffer	1. Flu A NP (H1N1) (GTX135904-pro) 2. Flu A NP (H3N2) (GTX136317-pro) 3. Lysis buffer	1. Flu B NP (B/Victoria/02/1987) (GTX136277-pro) 2. Flu B NP (B/Sydney/3/2004) (GTX135867-pro) 3. Lysis buffer	1. RSV type A NP (GTX136751-pro) 2. RSV type B NP (GTX136931-pro) 3. Lysis buffer	1. Running buffer 2. Mixture of SARS-CoV-2 (GTX135592-pro), Flu A-H1N1 (GTX135904-pro), and Flu B NP (GTX135867-pro) 3. Lysis buffer	1. HPV16 E7 (GTX133411-pro) 2. HPV18 E7 (GTX133412-pro) 3. Lysis buffer		

N: Nucleocapsid NP: Nucleoprotein

## Animal Health



<p>IHC</p> <p>Porcine circovirus type 2 / PCV2 Capsid antibody [GT863] (GTX634210)</p>	<p>ELISA</p> <p>Capture: ASFV p54 antibody [HL1287] (GTX636701) Detection: ASFV p54 antibody [HL1289] (GTX636703)</p>	<p>LFA</p> <p>Capture: ASFV p54 antibody [HL1287] (GTX636701) Detection: ASFV p54 antibody [HL1289] (GTX636703)</p>	<p>LFA</p> <p>Capture: ASFV p54 antibody [HL1219] (GTX636563) Detection: ASFV p54 antibody [HL1289] (GTX636703)</p>
--	---	---	---