

Innovative protein extraction strategy, open up a new chapter of 'column'



Excellent quality & fast and efficient protein extraction

Abbkine, as a product portfolio supplier in the field of cytology and proteomics, sincerely develops high-quality protein extraction applications related products for you, including ExKine™ Total Protein Extraction Kit for Animal Cultured Cells/Tissues, ExKine™ series protein and organelle extraction kit, protein quantification kit, antibody diluent, protein flash staining solution, etc. Effectively solve the problem of tedious, time-consuming and random protein loss in traditional protein extraction experiments, keep the biological activity and structural integrity of the extract, and help your protein research.



Based on the pain points of total protein extraction by traditional solution method, including the lack of protein components, the change of protein activity, and the low protein yield of small sample size, Abbkine developed the ExKine™ Pro Total Protein Extraction Kit for Animal Cultured Cells/Tissues, which can quickly extract the full-spectrum non-variant protein within 1 – 7 min, and perfectly retain the natural conformation of the protein, which can meet the needs of more extensive downstream experiments.

 Ordering information: KTP3007 | Size: 5T/20T

■ ExKine™ Pro Total Protein Extraction Kit for Animal Cultured Cells/Tissues  Exclusive

■ Protein Extraction/Organelle extraction/Protein Quantification

■ Enhanced Antibody Dilution Buffer/Protein Gel Fast Staining Solution (Coomassie Blue)

ExKine™ Pro Total Protein Extraction Kit for Animal Cultured Cells/Tissues ★ Exclusive

ExKine™ Pro Total Protein Extraction Kit for Animal Cultured Cells/Tissues is a new generation of ultra fast protein extraction tool. More and more evidence shows that the most commonly used RIPA buffer may lead to random loss of protein, resulting in many difficult data that are difficult to explain. The kit uses centrifugal column extraction technology combined with optimized lysis buffer to extract total protein more quickly and effectively, making WB results more accurate. The extraction system can be as low as 20 μ L by using centrifugal column to extract protein, which effectively solves the problem of small sample size. This kit is suitable for applications such as SDS-PAGE, WB, IP, enzyme activity detection and small-scale protein chromatography purification.



Features & benefits of the kit

- ★ Fast—extraction process can be completed within 1-7 min.
- ★ Protein integrity—no protein loss, protein yield can be up to 3-20 mg/mL.
- ★ Simple—no need for ultrasonic crushing, boiling, repeated freezing and thawing.
- ★ Convenient—non-denatured, active proteins are purified in less than two hours.

Demonstration of experimental results

Fig.1 Protein profiles of mouse liver extracted by denaturing lysis buffer and native buffer from different manufacturers. Extracted proteins were separated in 10% SDS-PAGE and stained with coomassie blue. Lane 1, Marker; Lane 2, native buffer from A manufacturer; Lane 3, native buffer from Abbkine; Lane 4, denaturing lysis buffer from A manufacturer; Lane 5, denaturing lysis buffer from B manufacturer; Lane 6, denaturing lysis buffer from C manufacturer; Lane 7, denaturing lysis buffer from Abbkine; Lane 8, denaturing lysis buffer from D manufacturer.

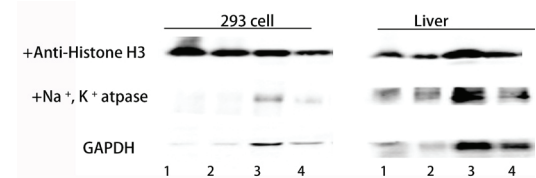
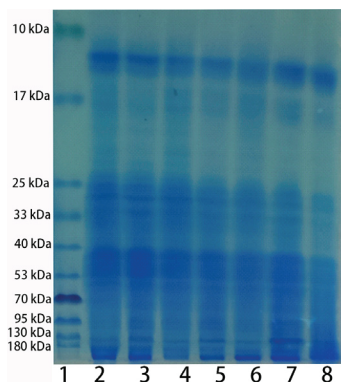


Fig.2 Total proteins were extracted from 293 cells and mouse liver. Lane 1, 5 μ L proteins extracted by B assay kits; Lane 2, 2.5 μ L proteins extracted by B assay kits; Lane 3, 5 μ L proteins extracted by Abbkine assay kits; Lane 4, 2.5 μ L proteins extracted by Abbkine assay kits.

Ordering information

Product Name	Cat. No.	Components	Size	
			5T	50T
ExKine™ Pro Total Protein Extraction Kit for Animal Cultured Cells/Tissues	KTP3007	Denaturing cell lysis buffer	2.5 mL	25 mL
		Native cell lysis buffer	2.5 mL	25 mL
		Protein extraction filter cartridge	5	50
		Collection tube with cap	5	50
		Plastic rod	1	2

Not only providing novel column method protein extraction kit products



Abbkine also developed other protein research tools related to ExKine™ Pro Total Protein Extraction Kit for Animal Cultured Cells/Tissues, including a complete set of protein extraction kits for extraction of different structural regions, organelles extraction kits for separate extraction of multiple submicroscopic structures, and protein quantification kits for accurate quantification of proteins.

ExKine™ Protein Extraction Kits

Abbkine provides a complete set of protein extraction kits to separate proteins from different structural regions, such as nuclear proteins, cytoplasmic proteins and membrane proteins, which are practical and simple. With protease inhibitor kit, it is suitable for a variety of protein experiments. All the experimental types are verified by Abbkine scientists. It is true and reliable to meet your different experimental needs.

Product Name	Applications	Cat. No.	Size
ExKine™ Nuclear and Cytoplasmic Protein Extraction Kit	WB, EMSA, Transcription analysis, protein purification, etc	KTP3001	50T/200T
ExKine™ Nuclear Protein Extraction Kit	WB, EMSA, Transcription analysis, protein purification, etc	KTP3002	50T/200T
ExKine™ Cytoplasmic Protein Extraction Kit	WB, IP, etc	KTP3003	50T/200T
ExKine™ Total Membrane Protein Extraction Kit	WB, IP, protein purification, etc	KTP3004	50T/200T
ExKine™ Membrane and Cytoplasmic Protein Extraction kit	WB, Protein analysis, Enzyme activity assay	KTP3005	50T/200T
ExKine™ Total Protein Extraction Kit	WB, IP, protein purification, etc	KTP3006	50T/200T
Protease Inhibitor Cocktail (100X)	Proteomic experiment	BMP1001	1ml/1ml×5

ExKine™ Organelle Extraction Kits

Abbkine provides a variety of organelles extraction kits, which can efficiently achieve the separation of multiple intracellular submicroscopic structures including nucleus and mitochondria, and retain their biological activities and structural integrity. The extracted organelles can be widely compatible with various downstream applications to meet your different experimental requirements.

Product Name	Applications	Cat. No.	Size
ExKine™ Nuclei Extraction Kit	Cell apoptosis, Cell transcription status and Nuclear component analysis in vitro	KTP4001	50T/200T
ExKine™ Nuclei Extraction Kit (High Purity)	Cell apoptosis, Cell transcription status and nuclear component analysis in vitro	KTP4002	20T/100T
ExKine™ Mitochondrion Extraction Kit (Cultured Cells)	Metabolism, Enzyme/protein activity, Mitochondrial component analysis, etc	KTP4003	50T/200T
ExKine™ Mitochondrion Extraction Kit (Tissue)	Metabolism, Enzyme/protein activity, Mitochondrial component analysis, etc	KTP4004	50T/200T

Protein Quantification Related Products

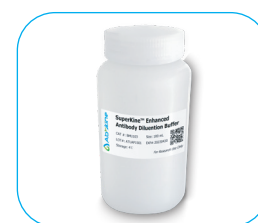
Accurate protein quantification is necessary for protein-related experiments involving molecular biology, cell biology, biochemistry, developmental biology and neuroscience. Abbkine protein quantification series products include protein quantification kit (BCA method and Bradford method), gel flash staining kit and prestained protein Marker.

Product Name	Applications	Cat. No.	Size
Protein Quantification Kit (BCA Assay)	Protein Quantification	KTD3001	500T/2000T/5000T
Protein Quantification Kit (Bradford Assay)	Protein Quantification	KTD3002	500T/2000T/5000T
Protein Gel Flash Staining Kit	PAGE gel staining	K21010	100 mL /250 mL /500 mL
Colorcode Prestained Protein Marker (10-180 kDa)	Prestained Protein Marker	BMM3001	100 µL/250 µL×2/250 µL×20
Colorcode Prestained Protein Marker (15-130 kDa)	Prestained Protein Marker	BMM3002	100 µL/250 µL×2/250 µL×20

But also offer the favorite SuperKine™ product associated with protein extraction series

SuperKine™ Enhanced Antibody Dilution Buffer HOT

This product can be used for the dilution and preparation of primary or secondary antibodies. The enhancer, blocking agent and stabilizer of antibody binding reaction are added to enhance the immune response, reduce the nonspecific binding, and obtain better results, which can be used repeatedly and save antibody. This product does not contain protein, phosphate, sodium azide or thiomersal preservatives, suitable for most types of antibody dilution, including HRP, AP labeled antibodies.



Product Name	Cat. No.	Flash Sales	Market Price(\$)
SuperKine™ Enhanced Antibody Dilution Buffer	BMU103-EN	\$59/100 mL \$179/500 mL	88.6/100ml

SuperKine™ Protein Gel Fast Staining Solution (Coomassie Blue) HOT

The instant SuperKine™ Protein Gel Fast Staining Solution (Coomassie Blue) developed by Abbkine has the advantages of short staining time, clear color, good repeatability and high safety, and can obtain a clear and clean background without decolorization. Based on the classical Coomassie blue staining principle, the target protein recovered after staining can be used for subsequent MS or Sequencing analysis.



Product Name	Cat. No.	Flash Sales	Market Price(\$)
SuperKine™ Protein Gel Fast Staining Solution (Coomassie Blue)	BMU105-EN	\$59/250 mL×2	199/1L

Application for free sample

Product Name	Cat. No.	Size
SuperKine™ Enhanced Antibody Dilution Buffer	BMU103-EN-s	20 mL
SuperKine™ Protein Gel Fast Staining Solution (Coomassie Blue)	BMU105-EN-s	30 mL×2

Abbkine Scientific Ltd

As the world's unique cell and protein product portfolio supplier, we provide basic tools and solutions in the fields of protein extraction and purification, immunoassays, cell culture separation, and metabolic analysis. Abbkine is committed to customer's success and excellence.

The product listed herein is for research use only and is not intended for use in human or clinical diagnosis.



The Path of Research