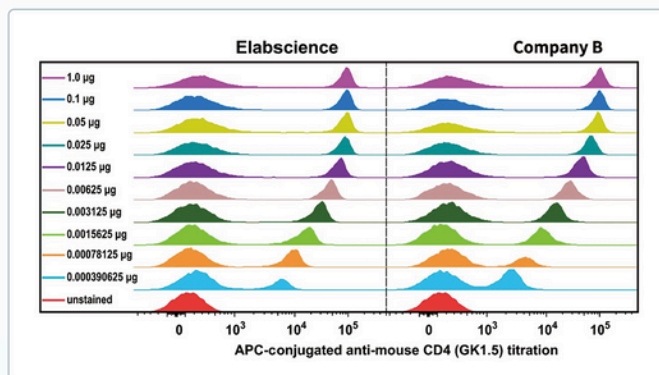


# Flow Cytometry Antibodies

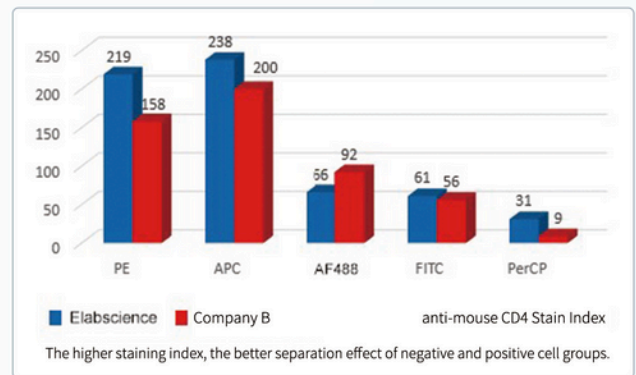
- ▶ **Efficient Identification Of Immune Cells**
- ▶ **Easily Identify Cell Activation Status**

## Advantages of Flow Cytometry Antibodies

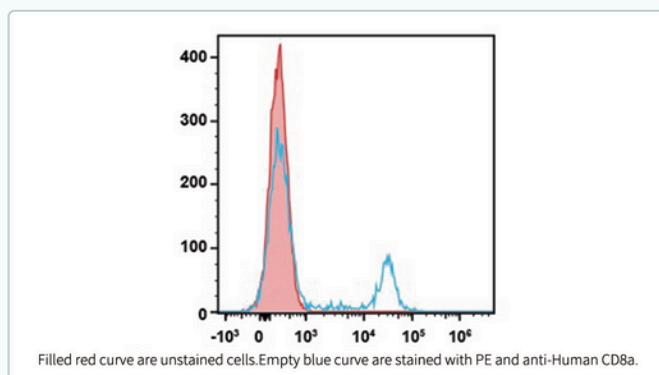
- ◎ **High quality:** Select commonly used clones as antibody source for flow cytometry antibodies with better labeling process.
- ◎ **Cost-effective:** Small package size, only \$15~50.
- ◎ **Adequate inventory:** Conventional antibodies in stock, ready to ship within 24 hours.



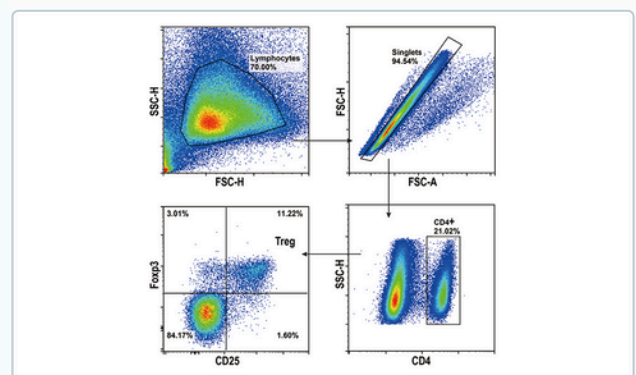
**Better Separated Results**  
Easily Separate Positive Cell Populations



**Better Labeling Process**  
Increased Staining Index



**Stronger Fluorescence Conjugation Technology**  
Reduced Staining Background



**Better Choice**  
Multicolor Streaming Excellence

## Top Selling Flow Cytometry Antibodies (partial)

Anti-Human	CD10	CD105	CD107a/LAMP-1	CD117	CD11b	CD11c	CD123	CD127/IL-7RA	CD13
	CD133	CD14	CD147	CD15	CD16	CD161	CD183/CXCR3	CD184/CXCR4	CD19
	CD196/CCR6	CD197/CCR7	CD20	CD206	CD24	CD25	CD27	CD273/PD-L2	CD274/PD-L1
	CD279	CD28	CD29	CD3	CD31	CD32	CD326	CD33	CD34
	CD36	CD38	CD4	CD40	CD41	CD44	CD45	CD45RA	CD45RO
	CD47	CD5	CD54	CD56	CD61	CD62L	CD64	CD66b	CD69
	CD7	CD73	CD80	CD81	CD83	CD86	CD8a	CD9	CD90
	HLA-A,B,C	HLA-DR	IFN- $\gamma$	IgD	IgM	IL-10	IL-17A	IL-4	PD-L1
Anti-Rat	CD3	CD4(domain 1)	CD44H	CD45	CD47	CD8a	CD90		
Anti-Mouse	CD103	CD105	CD115	CD117	CD11b	CD11c	CD122	CD127	CD127/IL-7RA
	CD14	CD16	CD1b	CD161/NK1.1	CD162	CD19	CD206	CD24	CD25
	CD274	CD274/PD-L1	CD279/PD-1	CD28	CD3	CD31	CD326	CD335	CD34
	CD38	CD3 $\epsilon$	CD4	CD40	CD41	CD44	CD45	CD45.1	CD45.2
	CD45R	CD45R/B220	CD47	CD48	CD49b	CD62L	CD64	CD69	CD71
	CD73	CD80	CD86	CD8a	CD90	CD90.1	CD90.2	F4/80	Foxp3
	Gr-1	H-2	IFN $\gamma$	IgM	IL-10	IL-17A	IL-2	IL-4	Ly6A/E
	Ly6C	Ly-6G	MHC II	MHC II (I-A/I-E)	NK1.1	PD-L1	TCR $\gamma/\delta$	TCR $\beta$	TER-119

currently can offer 2,700+ flow cytometry antibodies, and more indicators are being developed!

## Common Fluorochrome Information

Fluorochrome	Fluorescence Emission Color	Excitation Laser Lines (nm)	Excitation Max(nm)	Emission Max(nm)	Relative Fluorochrome Brightness
EV450	Blue	405	410	450	★★
AF488	Green	488	495	520	★★★
FITC	Green	488	490	530	★★★
PE	Yellow	488, 561	495, 565	575	★★★★★
PE/TR	Orange	488, 561	495, 565	620	★★★★★
APC	Red	633	650	660	★★★★
AF647	Red	633	650	670	★★★★
PE/Cyanine5	Red	488, 561	495, 565, 655	670	★★★★
PerCP	Red	488	440, 480, 675	675	★
PerCP/Cyanine5.5	Red	488	440, 480, 675	675	★★★★
PE/Cyanine5.5	Far Red	488, 561	495, 565, 675	690	★★★★
PE/Cyanine7	Infrared	488, 561	495, 565, 755	775	★★★★★
ER780	Infrared	633	625	765	★★

antibodies with 13 dyes now and more dyes are being developed!